

Illinois Theatre Association presents

40th Annual  
Illinois High School Theatre Festival

A stylized flame graphic in orange and yellow, with a grey outline, positioned to the left of the main title.

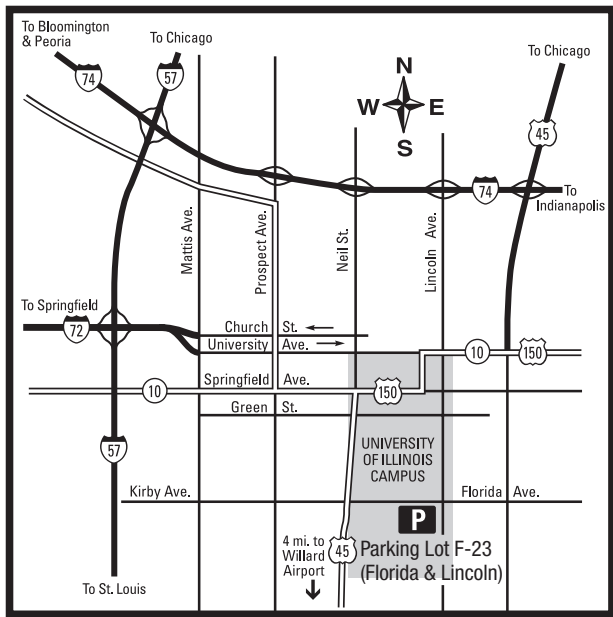
# **ignite** the **PASSION** **within**

January 8–10, 2015

Krannert Center for the Performing Arts  
University of Illinois at Urbana-Champaign

**Festival Program**

[www.illinoistheatrefest.org](http://www.illinoistheatrefest.org)



# ILLINOIS

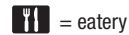
UNIVERSITY OF ILLINOIS AT URBANA-CHAMPAIGN



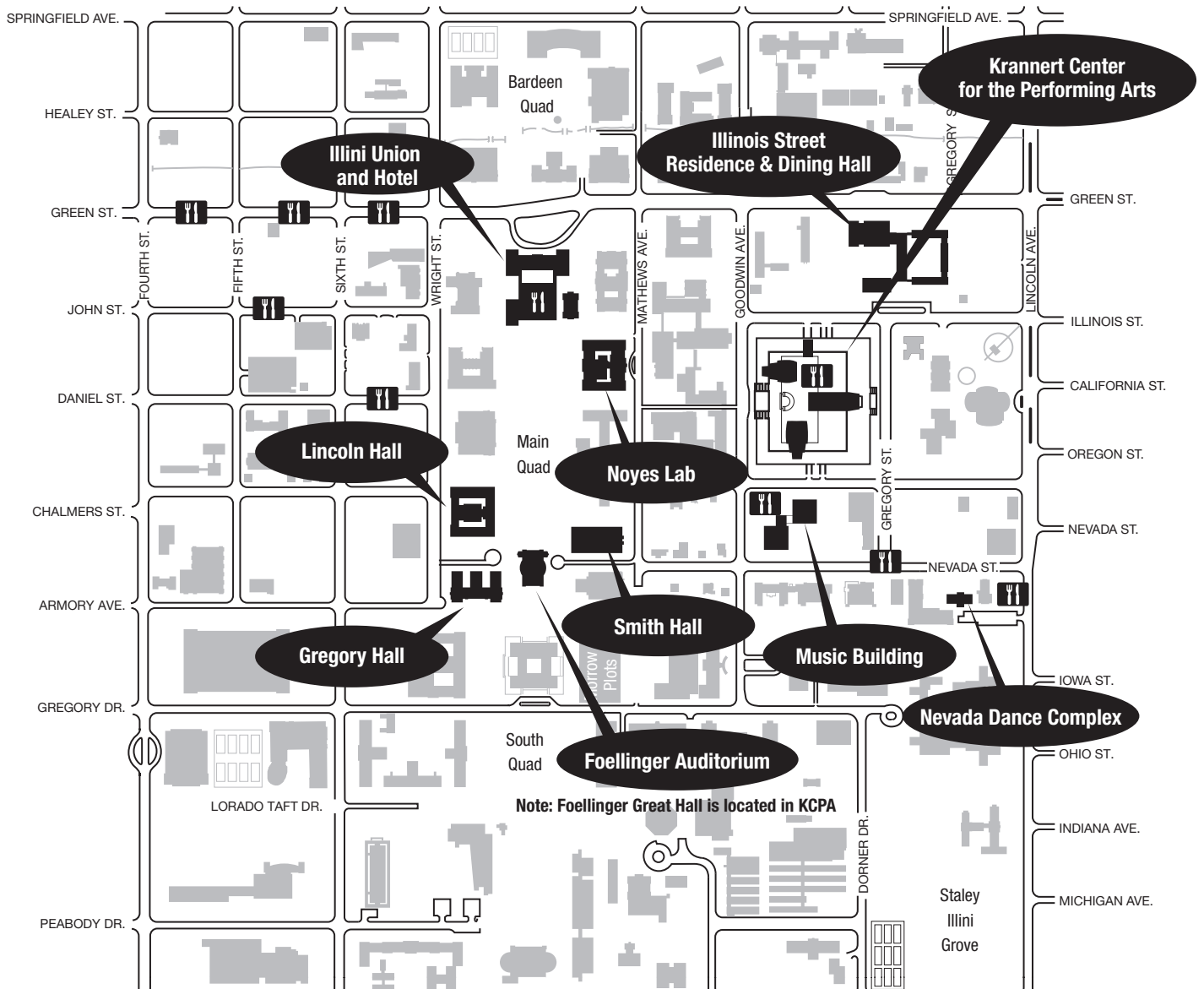
APPROXIMATE SCALE IN FEET FOR MAP BELOW



Urbana is east, Champaign is west  
of Wright Street



Theatres located in KCPA:  
Foellinger Great Hall  
Colwell Playhouse  
Tryon Festival Theatre  
Studio Theatre



## CONTENTS

|  |                    |
|--|--------------------|
| Campus Map . . . . .   | inside front cover |
| General Information . . . . .  | 1                  |
| Festival Objectives . . . . .  | 3                  |
| Welcome from the IHSTF Executive Director . . . . .                                | 4                  |
| Letter from the ITA President . . . . .  | 5                  |
| Letter from the Chancellor . . . . .   | 6                  |
| Participation Guidelines . . . . .   | 7                  |
| 2015 Festival Planning Committee . . . . .   | 8                  |
| Participating High Schools . . . . .   | 9                  |
| Production Respondents . . . . .   | 10                 |
| Exhibitors . . . . .   | 10                 |
| Workshop Presenters . . . . .  | 11                 |
| 2015 All-State Production: <i>PIPPIN</i><br>Production Staff and Company . . . . . | 12                 |
| Festival at a Glance . . . . .   | 14                 |
| Opening Ceremony/Performance . . . . .   | 18                 |
| College Auditions . . . . .  | 19                 |
| Friday Evening Activities . . . . .  | 20                 |
| Production Descriptions . . . . .  | 21                 |
| Workshop Descriptions:   |                    |
| Acting (A) . . . . .   | 25                 |
| Costuming/Makeup (C) . . . . .   | 32                 |
| Directing/Stage Management (D) . . . . .   | 33                 |
| Instructors/Teachers (I) . . . . .   | 34                 |
| Movement/Dance (M) . . . . .   | 35                 |
| Playwriting (P) . . . . .  | 38                 |
| Singing/Musical Theatre (S) . . . . .  | 39                 |
| Technical Theatre (T) . . . . .  | 40                 |
| Variety (V) . . . . .  | 42                 |
| Profiles of Schools Presenting Productions . . . . .                               | 44                 |
| Workshops Recommended for Teachers and<br>Sponsors . . . . .                       | 47                 |
| Graduate Course for Teachers and<br>CPDU Information . . . . .                     | 47                 |
| Acknowledgments . . . . .  | 48                 |
| Corporate Sponsors . . . . .   | 50                 |
| Advertisements . . . . .   | 51                 |
| Illini Union Maps . . . . .  | 62                 |
| Krannert Center for the Performing Arts Maps . . . . .                             | 64                 |
| Notes . . . . .  | 66                 |
| Plan Your Festival Schedule . . . . .  | 68                 |
| 2016 Festival Info . . . . .   | inside back cover  |
| Commonly Used Acronyms<br>& Abbreviations . . . . .                                | back cover         |

## GENERAL INFORMATION

### We Have Our Own App!

In an effort to be as green as possible, the IHSTF now has an app for all Apple and Android devices! This year, the program booklet has a "Festival at a Glance" section that can be pulled out, but all descriptions of workshops and productions can only be found on the app or can be printed from the Festival website ([www.illinoistheatrefest.org](http://www.illinoistheatrefest.org)). Additionally, the app has a schedule creator, instant updates as the Festival progresses, easy ways to connect with other attendees at the Festival, and much more! **EVERYTHING YOU NEED IN ONE APP!**

Go to the Apple App Store or Google Play Store and search for "Illinois High School Theatre Festival" to download the app today.



### Find the Festival on:



[www.twitter.com/ihstf](http://www.twitter.com/ihstf)



[www.facebook.com/  
IllinoisHighSchool  
TheatreFestival](http://www.facebook.com/IllinoisHighSchoolTheatreFestival)

## Krannert Center Lobby (Level 5)

### Festival Headquarters

Contact Headquarters at **217-244-8174**.

Throughout the Festival, information, maps, answers to questions, etc., may be obtained at Festival Headquarters, located in the KCPA Level 5 at these locations during these hours: Thursday, 4:00 pm–9:30 pm (Studio Theatre); Friday, 8:00 am–10:00 pm (Foellinger Great Hall Entrance); and Saturday, 9:00 am–3:00 pm (Foellinger Great Hall Entrance).

The following are located on **Level 5/Lobby Level/Main Level**: Foellinger Great Hall, Colwell Playhouse, Tryon Festival Theatre, Studio Theatre, Krannert Room.

### Also In Krannert Center Lobby

- **Exhibitors**: 48 colleges/universities/conservatories (vendors are located on Level 2)
- **FESTGEAR** (T-shirts, sweatshirts, etc.)
- **Swap Desk** for performance tickets (Friday and Saturday only)
- **Slideshow** from high school theatre productions across the state
- **Hospitality Room** for Sponsors/Faculty (in Krannert Room at far south end of KCPA lobby)
- **First Aid** (KCPA Patron Services Office)



## Krannert Center Levels 2, 3, 4

(see maps on pages 64–65)

### Level 2: “Tech Underground”

Join us on Level 2, the lowest level of the Krannert Center, for several exciting tech workshops and exhibits.

The following rooms are located on Level 2:

Choral Rehearsal Room, Drama Rehearsal Room,  
Orchestra Rehearsal Room, Foellinger Great Hall stage  
(for Tech Olympics), Scene Shop, Prop Shop, Studio  
Dressing Rooms

**Exhibitors:** 16 theatre-related vendors are located in the Orchestra Rehearsal Room (colleges are located in the Lobby on Level 5).

### Level 3

The following rooms are located on Level 3:

AV Room, Studio 1, Studio 2AB, TV Studio

### Level 4

The following rooms are located on Level 4:

CAD Lab, Drafting Studio, Ensemble AB

To get to Levels 3 & 4, go down the south stairs from the lobby, on the house right side of the Great Hall; or, from Level 2, go up the south stairs, near the Audio Office.

## Admission to Activities

All Festival registrants must have a ticket and name badge to attend Full-Length, Showcase, Opening and All-State performances. Workshops are not ticketed, but name badges must be worn at all times or you will be asked to leave. Some workshops may fill to capacity and participants may be turned away. Wristbands for the Friday night dance can only be purchased in advance at FEST-GEAR located in the lobby of the Krannert Center. Wristbands for the Friday night dance for the dance are \$5. There will be no wristbands sold at the door of the dance at the Illini Union. Students **MUST** wear their name badge to be allowed entrance to Friday evening activities.

## Lost Badges and Program Books

Name badges must be worn at all times. Replacement badges may be purchased at Festival Headquarters for \$3 each. Additional program books are also available for \$4 each.

Students, please go to  
[www.illinoistheatrefest.org](http://www.illinoistheatrefest.org)  
to provide feedback on  
this year's Festival.

## Swap Desk for Performance Tickets

Located in the KCPA Lobby (in the corridor next to Foellinger Great Hall), the Swap Desk will be open at 8:00 am–8:00 pm on Friday and 9:00–11:30 am on Saturday. Participants may trade any valid ticket for any available ticket. Students may not swap All-State tickets. In the event that Full-Length or Showcase tickets are still available 15 minutes before the beginning of a performance, remaining tickets (if any) will be distributed without the necessity of a trade.

## Locations Across Campus

The Festival uses many buildings across campus. See the inside front cover for a campus map. All buildings are within relatively short walking distance from one another.

### Directions from the Krannert Center to...

- **Lincoln Hall, Smith Memorial Hall, Gregory Hall, Foellinger Auditorium, Illini Union, and Noyes Lab:** Exit the west lobby doors (on either side of the KCPA Ticket Office) and cross Goodwin Ave. to the walkway between the two science buildings. Continue straight ahead until you reach the Main Quad. At the far south end of the Main Quad (to your left) is Foellinger Auditorium (the building with the dome). The building on the left (east) of Foellinger is Smith Memorial Hall. The building on the right (west) of Foellinger is Gregory Hall. At the far north end of the Main Quad (to your right) is the Illini Union. Noyes Lab is located to the right (east) of the Illini Union.
- **Illinois Street Residence Hall (ISR):** Exit the east lobby doors (on either side of Foellinger Great Hall). Illinois Street Residence Hall is the large building across the street to your left (north).
- **Music Building and Nevada Dance Complex:** Exit the south lobby doors (down the hallway next to the Festival Theatre). The School of Music Building is across the street on your right. The Nevada Dance Complex is a block or so southeast, on Nevada St. near Lincoln Ave.

## ISR Meal Cards

For those who have purchased meal cards, **Illinois Street Residence Hall** will be open Friday and Saturday from 11:00 am until 1:30 pm. Your meal card is programmed for lunch on Friday, January 9 and lunch on Saturday, January 10. Please note: On Saturday the cashier will keep the ISR meal card. The \$21.00 meal cards can be used at ISR towards all-you-care-to-eat cafeteria style dining. A wide variety of selections are available including salad bar, deli, grilled sandwiches, pizza, fresh fruit, and dessert. Vegetarian fare and healthy options are also available. **THE MEAL CARD IS ONLY GOOD AT ISR!**



## On-Campus Dining

There are several eateries located on the block just south of KCPA, including Merry Ann's Diner, Subway, Rosati's Pizza, Basil Thai, Caffebene, and J. Gumbo's. Other nearby eateries include Jimmy Johns and Caffè Paradiso (south-east of KCPA on Lincoln Ave.), plus Manolo's Pizza and Empanadas and Espresso Royale (just across Oregon St. at Goodwin Ave.).

Eateries in the Illini Union are also options for on-campus dining. Below are their operating hours:

| Eateries in the Illini Union |                  |                  |                  |
|------------------------------|------------------|------------------|------------------|
|                              | Thursday         | Friday           | Saturday         |
| <b>Main Level</b>            |                  |                  |                  |
| Espresso Royale              | 7:00 am–6:00 pm  | 7:00 am–6:00 pm  | 8:00 am–6:00 pm  |
| Jamba Juice                  | 10:00 am–4:00 pm | 10:00 am–4:00 pm | 10:00 am–3:00 pm |
| Quad Cones                   | 12:00 pm–2:00 pm | 12:00 pm–2:00 pm | 12:00 am–2:00 pm |
| Quad Shop                    | 7:30 am–5:00 pm  | 7:30 am–5:00 pm  | 7:30 am–5:00 pm  |
| <b>Lower Level</b>           |                  |                  |                  |
| Einstein's                   | 10:00 am–2:00 pm | 8:00 am–4:00 pm  | 9:00 am–3:00 pm  |
| Qdoba                        | 11:00 am–3:00 pm | 11:00 am–3:00 pm | 11:00 am–3:00 pm |
| Sbarro                       | 10:00 am–8:00 pm | 10:00 am–8:00 pm | 10:00 am–8:00 pm |
| Wendy's                      | 11:00 am–6:00 pm | 11:00 am–6:00 pm | 11:00 am–3:00 pm |

*Note: Eatery hours are subject to change without notice.*

This event is produced by the

**Illinois**  
**Theatre**  
**Association**

This program is partially funded by a grant from the Illinois Arts Council, a state agency.



Copyrights: The Board of the Illinois Theatre Association does not support nor condone the violation of U.S. copyright laws in regard to photocopying, electronic reproduction, or recording of copyright-covered materials.

## FESTIVAL OBJECTIVES

### I. To enrich the education of high school students by:

- Helping students realize through this experience that theatre is one means of fulfilling each individual's innate need and desire to create.
- Bringing diverse young people together in an environment of creative and imaginative stimuli where theatre can be witnessed, experienced, talked about, and lived.
- Providing experiences in which each student can recognize and share common ambitions, goals and interests with other students from diverse communities and programs.
- Allowing students to witness different types and styles of theatre processes and performance.

- Providing opportunities for students to showcase their creative efforts.

### II. To serve teachers, directors, and theatre sponsors by:

- Demonstrating specific educational theatre materials and techniques.
- Providing exposure to various program sizes and alternative approaches for theatre programs.
- Providing a showcase for accomplishments of student groups.
- Developing a forum and network for the exchange and sharing of ideas to build and expand theatre programs.



## WELCOME FROM THE IHSTF EXECUTIVE DIRECTOR

January 8, 2015



For 40 years, the Illinois High School Theatre Festival has been igniting the flame of passion for the arts. A professional performance, showcased high school theatre, workshops on all aspects of theatre, and an All-State production of *Pippin* are some of the opportunities that sponsors and students will experience. The energy this weekend creates, with over four-thousand high school theatre students, is amazing.

I remember attending the Festival as a high school student. It was always a time of excitement for my friends and me. We always left the Festival with our passion for theatre reignited. It is my hope that this Festival will do the same for you...that it will ignite, or reignite, the passion you have for theatre. It doesn't matter if you are a sponsor, student, actor, or techie, the Illinois High School Theatre Festival is here to help you learn, explore, expand, and create.

Please make sure to take advantage of the many workshops and shows offered this weekend. You are at one of the largest high school theatre festivals in the country, don't waste this opportunity. Take time to get to know other students from other schools and collaborate with them. Share stories, experiences, and traditions your school has. Push yourself, take a risk, try something new, ignite the PASSION within!

Sincerely,

A handwritten signature in black ink, reading "Brian S. Alexander".

Brian S. Alexander  
IHSTF Executive Director 2015

*"Passion rebuilds the world for the youth. It makes all things alive and significant."*

—Ralph Waldo Emerson

*This Festival is produced by members of the Illinois Theatre Association.*





# Illinois Theatre Association

## OFFICERS

### President

Dinah Barthelmess  
Wilmette Junior High School

### First Vice-President

Faye Ryan  
Loyola Academy

### Second Vice-President

Judy Klingner  
Fremd High School

### Secretary

Amelia Kmiec  
Round Lake High School

### Treasurer

Kurt Steinhäuser

### Executive Director

Aimee-Lynn Newlan

## DIVISION REPRESENTATIVES

### Community Theatre

Dan Fleischer  
Summer Repertory Theatre

Richard Gannon  
Grove Players

### Creative Drama

Emily Leonard  
Beverly Arts Center

Ioana Ligdas  
Daniel Wright Junior High School

### Professional Theatre

Madrid St. Angelo  
The Artistic Home

Tamara Sibley  
TMS Casting

### Secondary School Theatre

Karen Hall  
Maine East High School

Jonathan Meier  
Mundelein High School

### Theatre for Young Audiences

Cynthia Bringer  
Westfield Middle School

Dr. Andy Morgan  
The Penguin Project

### University/College Theatre

Allan Kimball  
Southeastern Illinois College

Marty Lynch  
Eureka College

IHSTF 2015: ignite the PASSION within

What a pleasure it is to welcome you all to the Illinois High School Theatre Festival! Now celebrating its 40<sup>th</sup> year, we begin a new decade of offering you full immersion into all things theatrical, enticing you to reignite your innate need and desire to create.

I invite you to fully engage in the vast array of possibilities that await you here. Soak everything in and never underestimate from where your inspiration will come. The briefest conversation with a fellow thespian or a seasoned instructor, the "Aha!" discovery in a workshop, or the moment in a play that takes your breath away; any of these might be the spark that ignites the fire in your own artistry. Don't wait for that moment of discovery – seek it out! Be ready to find that spark of your own!

Immense thanks are due to the many hours of planning provided by the dedicated and industrious committee members that bring this festival to life year after year with increasing vitality, professionalism and execution. On behalf of the Board of the ITA, we thank them all for their expertise, dedication, and passion.

Wishing you a wonderful journey in pursuit of the spark that ignites your passion!

Dinah Barthelmess  
ITA President

---

123 Mill Pond Drive / Glendale Heights, Illinois 60139  
312-265-5922 office / 312-265-6101 fax  
[info@illinoistheatre.org](mailto:info@illinoistheatre.org)  
[www.illinoistheatre.org](http://www.illinoistheatre.org)



UNIVERSITY OF ILLINOIS  
AT URBANA-CHAMPAIGN

Office of the Chancellor  
Swanlund Administration Building  
601 East John Street  
Champaign, IL 61820



January 8, 2015

Dear Students and Educators,

It is my privilege to welcome the Illinois High School Theatre Festival back to the University of Illinois at Urbana-Champaign for this 40<sup>th</sup> annual event. It is always a pleasure to host this premier statewide showcase of the performing arts. There is nothing quite like the energy of more than 4,000 of you coming together to perform, to learn, to teach and to celebrate.

For the next few days you will remind all of us of the tremendous power of the theatre to entertain, to educate and to translate imagination into moments of personal transformation. It is truly amazing to see how a script—simple words on flat pages—comes to life on a stage. And it is even more amazing when you get a look behind the scenes and see just how much collaboration and cooperation goes into every moment we experience as an audience. From the sound and lighting design to the costumes, properties, blocking, music, acting and directing—every aspect comes together in an elaborate dance that for a fleeting few minutes creates a new world for those lucky enough to be sitting and watching, there and then.

It is a special skill and admirable talent to be able to ignite the dreams of an audience and to transport them to new places and new heights. It is also the product of hard work, long rehearsal and personal passion. Most of us never get to see behind the curtains.

But what we do get to see together is what happens when that curtain goes up. Our collective breath is taken away. A darkened room becomes a journey of surprise and wonder. And the only thing we can do is sit back, enjoy and put our hands together in applause.

Welcome to the University of Illinois at Urbana-Champaign!

Sincerely,

Phyllis M. Wise  
Chancellor



## PARTICIPATION GUIDELINES

- Festival participants are expected to attend and be a part of Festival-sponsored activities and performances.
- Take full advantage of the Festival by arriving on time for workshops and performances. Tickets for performances are valid only until published performance times. At published curtain times, empty seats will be filled by participants who do not have tickets (except for All-State).
- If you, or your school, have performance tickets that you are not going to use or swap, please turn them in to the swap desk at least 30 minutes before curtain time.
- Information about the Swap Desk for ticket exchange can be found on page 2 of the Festival program.
- As an audience member, you are part of the performance, but you are not a performer. Therefore, good manners toward those on stage are extremely important.
- No one may save seats for any performance.
- **No food or drink is allowed in the theatres and workshop spaces, with the exception of bottled water.**
- The use of any audio or video recording device or camera in any theatre is prohibited. This includes cell phones.
- Please plan to maintain a full schedule for both Friday and Saturday. Get plenty of rest so that you do not find yourself losing interest or energy in the middle of the day. Many professionals and schools have donated time to provide quality workshops and shows. Please show your appreciation by attending every event that you can.
- You must wear your Festival badge to all events, including Friday night activities. On the front, your badge must include your full name and school name, and on the back should appear your sponsor's name and Festival phone contact.. Note: A sponsor, monitor, or University staff member has the right to ask to see your badge. Replacement badges must be purchased at Festival headquarters (for \$3) if originals are lost. Replacement Festival Program books are also available (for \$4).
- The use of drugs/alcohol during attendance at the Festival is absolutely prohibited. Parents of a student who is found in violation will be contacted and requested to remove the student immediately—no matter what time of the day or night.
- **Smoking is prohibited in all University buildings.**
- **Students are not allowed to smoke on campus or in the hotels.**
- Students should travel in groups of at least three and inform their chaperone of their schedule. Emergency phones are located throughout the campus and will connect you to the campus police if needed. (Refer to back of name badge for numbers.)
- Curfew: City ordinance requires that no minor be on the streets without an adult after 11:00 pm on Thursday and 11:59 pm on Friday. In an effort to keep hotel behavior consistent among all schools and to keep the Festival a positive experience for everyone, the Festival has established a housing curfew. All students are expected to be in their rooms and quiet by 12:00 am Thursday and 1:00 am Friday.
- Please remember that you are representatives of your school's theatre program and conduct yourselves accordingly. The Festival is a time to share new ideas and concepts. **It is expected that you will be polite and receptive at all performances and workshops.**
- Also, courteous behavior is expected at Champaign-Urbana area hotels, restaurants, and stores.
- Participants acknowledge that photos/videos may be taken by authorized individuals and used for educational, instructional, or promotional purposes in any print, broadcast, and/or electronic media formats.
- Sponsors are asked to remind students that any content on social media sites and/or personal blogs/websites shall be appropriate to the IHSTF's mission and purpose, as well as students' roles as representatives of their schools.



### LET'S SET THE PROPER TONE — TURN OFF THE CELL PHONE!

No calls, texting, or tweeting during performances or workshops! Students found using phones during performances will have their phones confiscated. (Confiscated phones can be picked up at the Festival Headquarters at Krannert.)

**First Aid Services** will be located in the KCPA Patron Services Office on Lobby–Level 5 of the Krannert Center during the hours of the Festival. In other emergencies, please call 911 (or 9-911 from a campus phone).



## 2015 FESTIVAL PLANNING COMMITTEE



### **Executive Director (2015)**

Brian Alexander, Heyworth H.S.

### **Executive Director Emeritus (2014)**

Demetrios Pappageorge, Downers Grove North H.S.

### **Secretary/Executive Director (2016)**

Carmel DeStefano, Reavis H.S.

### **Historian/Documentarian**

Kurt Steinhauser

### **All-State Director**

Karen Hall, Maine East H.S.

### **All-State Producers**

Andy Sinclair, Niles West H.S.

Laura Gilbert, Lockport H.S.

### **Assoc. Directors: Auditions**

Allan Kimball, Southeastern Illinois College

Marty Lynch, Eureka College

### **Assoc. Director: Box Office & Ticketing**

Annaliisa Ahlman, Niles North H.S.

### **Assoc. Director: Development/Public Relations**

Marty Jean Goughnour, James B. Conant H.S.

### **Assoc. Directors: Exhibits**

Tom Skobel, Glenbard South H.S.

Adam Miller, Warren Township H.S.

### **Assoc. Director: Hospitality/Mentors**

Judy Swiger, Mahomet-Seymour H.S. (retired)

### **Assoc. Directors: Play Selection**

Nathaniel Haywood, Downers Grove South H.S.

Sandra Smycz, Loyola Academy

### **Assoc. Directors: Promotions**

Julie Ann Robinson, Glenbrook North H.S.

Michael Stephensen, Victor J. Andrew H.S.

### **Assoc. Director: Technology**

Dennis Anastasopoulos, Reavis H.S.

### **Assoc. Directors: Workshops**

LaDonna Wilson, Champaign Central H.S.

Christopher Thomas, Libertyville H.S.

### **Illinois Theatre Association**

Aimee-Lynn Newlan, Executive Director

Dinah Barthelmess, President

### **ITA Liaison**

Jonathan Meier, Mundelein H.S.

### **University of Illinois at Urbana-Champaign**

#### **Local Arrangements**

Michelle Marquart, Program Coordinator

Valli Hammer, Program Associate

#### **Department of Theatre Rep**

J.W. Morrisette, Asst. Head for Academic Programs

#### **Krannert Center for the Performing Arts**

Daniel Pozzebon, Events Director

Terry Ciofalo, Assoc. Production Director

Lisa Lillig, Asst. Director for Client Relations

Nicole Bromley, Events Technical Director

#### **Student Coordinators**

Sami Kosinski and Matthew Brooks, Productions

David Mor, Workshops & Volunteers

### **Illinois State University**

#### **School of Theatre and Dance Rep**

Cyndee Brown

#### **Student Coordinators**

Katie Apperson, Kyle Kolling, and Molly Triveline

## PARTICIPATING SCHOOLS

**4,114 registered high school students and sponsors attending from 149 high schools across the state.**

Addison Trail H.S.  
 Adlai E. Stevenson H.S.  
 Althoff H.S.  
 Alton H.S.  
 Amos Alonzo Stagg H.S.  
 Antioch Community H.S.  
 Arcola H.S.  
 Auburn Creative and Performing Arts H.S.  
 Barrington H.S.  
 Bartlett H.S.  
 Batavia H.S.  
 Belvidere H.S.  
 Belvidere North H.S.  
 Benton Consolidated H.S.  
 Bloomington H.S.  
 Bolingbrook H.S.  
 Buffalo Grove H.S.  
 Byron H.S.  
 Carl Sandburg H.S.  
 Carmel Catholic H.S.  
 Centennial H.S.  
 Champaign Central H.S.  
 Chrisman H.S.  
 Civic Memorial H.S.  
 Clinton H.S.  
 Community H.S. D94, West Chicago  
 Crete-Monee H.S.  
 Crystal Lake Central H.S.  
 Crystal Lake South H.S.  
 Deerfield H.S.  
 Downers Grove North H.S.  
 Downers Grove South H.S.  
 East Leyden H.S.  
 Edwardsville H.S.  
 Effingham H.S.  
 Elk Grove H.S.  
 Elmwood Park H.S.  
 Farmington Central H.S.  
 Fieldcrest H.S.  
 Galena H.S.  
 Galesburg H.S.  
 Genoa-Kingston H.S.  
 Glenbard East H.S.  
 Glenbard North H.S.  
 Glenbard South H.S.  
 Glenbard West H.S.

Glenbrook North H.S.  
 Glenbrook South H.S.  
 Grayslake North H.S.  
 Guerin Prep H.S.  
 Guilford H.S.  
 Harrisburg H.S.  
 Harvard H.S.  
 Heritage H.S.  
 Heyworth H.S.  
 Highland Park H.S.  
 Hinsdale South H.S.  
 Hoffman Estates H.S.  
 Homewood-Flossmoor H.S.  
 IC Catholic Prep  
 Illini West H.S.  
 Illinois Lutheran School  
 James B. Conant H.S.  
 Jersey Community H.S.  
 Johnsborg H.S.  
 Joliet Catholic Academy  
 King College Prep  
 Lake Forest H.S.  
 Lake Park H.S.  
 Lake Zurich H.S.  
 Lakes Community H.S.  
 Larkin H.S.  
 Lemont Township H.S. District 210  
 Libertyville H.S.  
 Lockport Township H.S.  
 Loyola Academy  
 Mahomet-Seymour H.S.  
 Maine East H.S.  
 Maine South H.S.  
 Maine West H.S.  
 Marengo Community H.S.  
 Marmion Academy  
 Mather H.S.  
 Mattoon H.S.  
 McHenry Community H.S. District 156, East Campus  
 Metea Valley H.S.  
 Minooka Community H.S.  
 Moline H.S.  
 Mother McAuley Liberal Arts H.S.  
 Mt. Vernon Township H.S.  
 Mt. Zion H.S.  
 Mundelein H.S.  
 Naperville Central H.S.  
 Naperville North H.S.  
 Nazareth Academy  
 Neuqua Valley H.S.

Nicholas Senn H.S.-Senn Arts  
 Niles North H.S.  
 Niles West H.S.  
 Normal Community H.S.  
 Oak Park and River Forest H.S.  
 Peoria Notre Dame H.S.  
 Plainfield Central H.S.  
 Plainfield East H.S.  
 Plano H.S.  
 Pleasant Plains H.S.  
 Princeton H.S.  
 Prospect H.S.  
 Rantoul Township H.S.  
 Reavis H.S.  
 Reed-Custer H.S.  
 Richmond Burton Community H.S.  
 Ridgewood H.S.  
 Rockford Lutheran H.S.  
 Rolling Meadows H.S.  
 Rosary H.S.  
 Sacred Heart Griffin H.S.  
 Saint Bede Academy  
 Saint Ignatius College Prep  
 Saint Joseph-Ogden H.S.  
 Saint Patrick H.S.  
 Salem Community H.S.  
 Schaumburg H.S.  
 St. Charles East H.S.  
 St. Charles North H.S.  
 St. Teresa H.S.  
 Timothy Christian H.S.  
 Trinity H.S.  
 Tuscola Community H.S.  
 Unity H.S.  
 University Laboratory H.S.  
 Urbana H.S.  
 Vernon Hills H.S.  
 Victor J. Andrew H.S.  
 Walter Payton College Prep  
 Warren Township H.S.  
 Warsaw H.S.  
 Waubonsie Valley H.S.  
 Wauconda H.S.  
 West Carroll H.S.  
 West Leyden H.S.  
 Westville H.S.  
 William Fremd H.S.  
 William R. Harper H.S.  
 Willowbrook H.S.  
 Woodstock H.S.  
 Woodstock North H.S.



## PRODUCTION RESPONDENTS

**Many thanks to all those who volunteered their time responding to productions submitted by schools throughout the state.**

Sue Aldridge  
Brian Alexander  
Carol Allen  
Mark Begovich  
Susan Bookless  
Cyndee Brown  
Donna Burke  
Christine Cacciatore  
Patt Cheney  
Abra Chusid

Peter Cocuzza  
Jim Crow  
Carmel DeStefano  
Stephanie Gannaway  
Jacob Goldstein  
Marty Jean Goughnour  
Lisa Groves  
Pat Haynes  
Nathaniel Haywood  
Tom Herman  
Shannon Hinkle  
Kristen Jett  
D. Ann Jones  
Michael Karasch  
Sara Keith  
Allan Kimball  
Stacie Kintigh

Judy Klingner  
Amelia Kmiec  
John Knight  
Brandon Lewis  
Mary Luckritz  
Joselyn Ludtke  
Angela Marcum  
Justin Mayo  
Patrick McGuire  
Adam Miller  
Sarah Mohr  
Sandra Osis  
Demetrios Pappageorge  
Becky Park  
Victor Pilolla  
Jennifer Popple

Julie Ann Robinson  
Susan Rothchild  
Faye Ryan  
Andy Simon  
Andy Sinclair  
Tom Skobel  
Steven Smidl  
Sandra Smycz  
Judy Swiger  
Christopher Thomas  
Sarah Verona  
Tony Walker  
LaDonna Wilson  
Melissa Wolf  
Gareth York  
Sandy Zielinski

## EXHIBITORS

**VISIT OUR EXHIBITORS at the Krannert Center,  
5:00 pm Thursday–3:00 pm Saturday.**

### COLLEGES (Level 5 | Lobby)

AMDA College and Conservatory of the Performing Arts  
(New York, NY)  
Augustana College (Rock Island, IL)  
Aurora University (Aurora, IL)  
Ball State University (Muncie, IN)  
Blackburn College (Carlinville, IL)  
Bradley University (Peoria, IL)  
Butler University (Indianapolis, IN)  
Carthage College (Kenosha, WI)  
Clarke University (Dubuque, IA)  
Columbia College (Chicago, IL)  
Cornell College (Mount Vernon, IA)  
Eastern Illinois University Theatre Arts Dept.  
(Charleston, IL)  
Elmhurst College (Elmhurst, IL)  
Eureka College (Eureka, IL)  
Hannibal-LaGrange University (Hannibal, MO)  
Illinois State University (Normal, IL)  
Illinois Wesleyan University (Bloomington, IL)  
Lewis University (Romeoville, IL)  
Miami University (Oxford, OH)  
Millikin University (Decatur, IL)  
Missouri State University (Springfield, MO)  
Monmouth College (Monmouth, IL)  
New York Film Academy (New York, NY)  
North Central College (Naperville, IL)  
North Park University (Chicago, IL)  
Northern Illinois University (DeKalb, IL)  
Northwestern University–NHSI (Evanston, IL)  
Parkland College (Champaign, IL)  
Purdue University (West Lafayette, IN)  
Rockford University (Rockford, IL)

Saint Mary's University of Minnesota (Winona, MN)  
Southeastern Illinois College (Harrisburg, IL)  
Southern Illinois University Carbondale (Carbondale, IL)  
Southern Illinois University Edwardsville (Edwardsville, IL)  
St. Ambrose University (Davenport, IA)  
The New York Conservatory for Dramatic Arts (NY, NY)  
The Theatre School at DePaul University (Chicago, IL)  
University of Dubuque (Dubuque, IA)  
University of Illinois at Chicago (Chicago, IL)  
University of Illinois College of Fine + Applied Arts  
(Champaign, IL)  
University of Illinois Dept. of Theatre (Urbana, IL)  
University of Wisconsin–Stevens Point (Stevens Point, WI)  
Vero Voce Theater and School of Performing Arts  
(St. Charles, IL)  
Viterbo University (La Crosse, WI)  
Western Illinois University (Macomb, IL)  
Western Michigan University (Kalamazoo, MI)  
Wisconsin Lutheran College (Milwaukee, WI)

### VENDORS (Level 2 | Orchestra Rehearsal Room)

A & B Photo & Print (Chicago, IL)  
American Academy of Dramatic Arts (New York, NY)  
Associated Controls + Design (Indianapolis, IN)  
Broadway Costumes, Inc. (Chicago, IL)  
Chicago Spotlight, Inc. (Chicago, IL)  
Costume Holiday House (Fremont, OH)  
DesignLab (Chicago, IL)  
Dramatic Publishing (Woodstock, IL)  
Forte Stage Combat, Inc. (Glen Ellyn, IL)  
Grand Stage (Chicago, IL)  
Hall Associates Flying Effects (DeKalb, IL)  
Intelligent Lighting Creations, Inc. (Arlington Heights, IL)  
International Thespian Society (Cincinnati, OH)  
Midwest Event Solutions (Algonquin, IL)  
Music Makers Theatre (Western Springs, IL)  
On the FLY Productions LLC (IN/FL/MO)  
USITT Midwest Regional Section (Winfield, IL)





## WORKSHOP PRESENTERS

**Thank you to all our wonderful volunteer workshop leaders. This Festival could not take place without you. Students, be sure to thank them!**

Dennis Anastasopoulos, Reavis H.S.  
Robert G. Anderson, Univ. of Illinois at Urbana-Champaign  
Richard Arnold, Elmhurst College  
Robert AuFrance, Waldorf College Theatre Department  
David Barone, Glenbard North H.S.  
Charles Berglund, Glenbard North H.S. (retired)  
John Boesche, Univ. of Illinois at Urbana-Champaign  
Michele Bonzi, Rockford Lutheran H.S.  
Eryn Brown, Libertyville H.S.  
Patricia Cheney, Oak Park and River Forest H.S.  
Abra Chusid, Lakes Community H.S.  
Terry Ciofalo, Univ. of Illinois at Urbana-Champaign  
Krystina Coyne, Illinois State Univ.  
Brenna Cronin, Teaching Artist  
Eric Curtis, Acting Matters  
Michael Daehn, Ball State Univ.  
Adria Dawn, Tarleton/Dawn Productions  
Connie De Veer, Illinois State Univ.  
Patrick Deane, Lockport Township H.S.  
Rebecca Ferrell, Univ. of Illinois at Urbana-Champaign  
Jay Fontanetta, Metea Valley H.S.  
Tim Frawley, Forte Stage Combat, Inc.  
Brian Fruits, Maine West H.S.  
Ken Frykholm, Lockport Township H.S.  
Joel Furmanek, KSA Lighting  
Christopher Gadomski, Eastern Illinois Univ.  
Dominic Garramone, Saint Bede Academy  
Anna Gianni, Illinois State Univ.  
Susan Gosdick, Univ. of Illinois at Urbana-Champaign  
Marcel Graham, Lake Zurich H.S.  
Chris Guyotte, Universtiy Laboratory H.S.  
Kristy Leigh Hall, Univ. of Illinois at Chicago  
Christina Harrington, Illinois State Univ.

Janet Hart, Southeastern Illinois College  
Jaelyn Hawkins, Northern Illinois Univ.  
Tammy Honesty, Elmhurst College  
Charlie Hulme, Grand Stage Company, Philips Entertainment  
Anne James-Noonan, New Trier H.S.  
Chris Jensen, West Chicago Community H.S.  
Mark Jeter, The New York Conservatory for Dramatic Arts  
Rebecca Johnson, Illinois State Univ.  
Auriel Jones, Northern Illinois Univ.  
Stacy Joyce, Aurora Univ.  
Kitty Karn, Western Illinois Univ.  
Kearstyn Keller, Northern Illinois Univ.  
Hillerre Kirsch, New Trier H.S.  
Cynthia Kocher, Univ. of Illinois at Urbana-Champaign  
Alexi Langlois, Northern Illinois Univ.  
Elizabeth Lanza, Glenbard North H.S.  
Lucinda Lawrence, Univ. of Illinois at Urbana-Champaign  
Mark Lococo, Elmhurst College  
Jaclyn Loewenstein, Class Act  
Frank Ludwig, Elmhurst College  
Marty Lynch, Eureka College  
Nina Lynn, New Trier H.S.  
Bethany Mangum, Northern Illinois Univ.  
Lauren Markey, Northern Illinois Univ.  
Azizi Marshall, Trinity H.S.  
Jason Martin, Univ. of Illinois at Chicago  
Mikel Matthews, Rantoul Township H.S.  
Alyssa Mayfield, Regina Dominican H.S.  
Quinn McGavin, Illinois State Univ.  
Mary Beth Mezo, Mt. Vernon Township H.S.  
Alex Miller, Millikin Univ.  
Sarah Mohr, Champaign Central H.S.  
J.W. Morrisette, Univ. of Illinois at Urbana-Champaign  
Zach Moyer, Zach Moyer Casting  
Marina Mularz, Northwestern Univ.  
Kate Murphy, Maine West H.S.  
Kennedy Musich, Illinois State Univ.  
Tracy Nunnally and Hall Associates Flying Effects staff  
Christina Ordonez, Hoffman Estates H.S.  
Stacy Panitch, Aurora Univ.

Robert Perry, Univ. of Illinois at Urbana-Champaign  
Sara Phillips, Plano H.S.  
Tanya Picard, Impulse Dance Company  
Robert Picklesimer, Creative Dramatics Workshop  
Dr. Mark Plummer, Aurora Univ.  
Johnathan Pontarelli, Neuqua Valley H.S.  
Thomas Quinn, Illinois Wesleyan Univ.  
Alexandra Raffini, Univ. of Missouri-Columbia  
Michael-Colin Reed, Darkhouse Entertainment  
Emily Rieder, Northern Illinois Univ.  
Holly Rocke, Eureka College  
Britnee Ruscitti, Rolling Meadows H.S.  
William Rush, William Rush Voice Consultants  
Marc Schapman, Southern Illinois Univ. Edwardsville  
Neil Scharnick, Carthage College  
Steve Scott, The Goodman Theatre  
Scott Shallenbarger, Highland Park H.S.  
Nick Shaw, Eastern Illinois Univ.  
Jo Slowik, Lewis Univ.  
Mark Spain, Illinois State Univ.  
Nicholas Spindler, Illinois State Univ.  
Stephanie Svarz, Univ. of Illinois at Urbana-Champaign  
David Tarleton, Tarleton/Dawn Productions  
Anne Thibault, Eastern Illinois Univ.  
Kyle Thomas, Univ. of Illinois at Urbana-Champaign  
Diane Timmerman, Univ. of Illinois at Urbana-Champaign  
Kate Vargulich, Illinois State Univ.  
Krista Wachob, King College Prep  
Cody Walker, Southern Illinois Univ. Carbondale  
Jenna Weglarz-Ward, Univ. of Illinois at Urbana-Champaign  
Janeve West, Cornell College  
Janet Wilson, Illinois State Univ.  
Stephanie Wilson, New York Film Academy  
Kelly Wren, Plainfield School District  
Jennifer Wygant, Byron H.S.  
Gareth York, Southeastern Illinois College  
Jim Yost, Loyola Academy



**THE ILLINOIS THEATRE ASSOCIATION  
AND THE 2015 ILLINOIS HIGH SCHOOL THEATRE FESTIVAL  
PROUDLY PRESENT OUR ALL-STATE PRODUCTION**

Book by  
ROGER O. HIRSON

Music & Lyrics by  
STEPHEN SCHWARTZ

Originally produced  
on the Broadway stage  
by Stuart Ostrow

Directed on the  
Broadway stage by Bob Fosse

Theo Ending  
Originally Conceived in 1988  
by Mitch Sebastian



*PIPPIN* is presented through  
special arrangement with Music  
Theatre International (MTI).

All authorized performance  
materials are also supplied by  
MTI.

421 West 54th Street  
New York, NY 10019

Phone: 212-541-4684  
Fax: 212-397-4684

[www.MTIShows.com](http://www.MTIShows.com)

**the actors  
gymnasium**  
Circus & Performing  
Arts School

## **Production Staff**

Karen M. Hall, *Director*  
(Maine East H.S.)

Laura Gilbert, *Co-Producer*  
(Lockport Township H.S.)

Andy Sinclair, *Co-Producer*  
(Niles West H.S.)

David Ladd, *Music Director*  
(New Trier H.S.)

Edward Eubank, *Orchestra Director*  
(Maine East H.S.)

Jessica Buczek, *Scenic Designer*  
(Maine East H.S.)

Kevin Phelan, *Technical Director*  
(Vernon Hills H.S.)

Kevin Holly, *Lighting Designer*  
(Libertyville H.S.)

Kimberly G. Morris, *Costume  
Designer*  
(Niles West/Maine East H.S.)

Ian Garrett, *Sound Designer*  
(Glenbard East H.S.)

Austin Swan, *Assistant Sound  
Designer*  
(Gand Concert Sound)

Sylvia Hernandez-DiStasi, *Circus  
Choreographer/Coach*  
(The Actors Gymnasium)

Akemi Berry, *Assistant Circus  
Choreographer/Coach*  
(The Actors Gymnasium)

Julie Crossen, *Rehearsal Pianist*  
(Niles West/Maine East H.S.)

## **Illinois State University Chaperones**

Marissa Talarico, *Coordinator*

Drew Echales

Dan Esquiuel

Kelsey Kott

Chris Stevenson

## **All-State Company**

Caleb Abbott, *Crew*  
(Benton Consolidated H.S.)

Yohana Ansari-Thomas, *Actor*  
(Oak Park and River Forest H.S.)

Milan Babic, *Actor*  
(Buffalo Grove H.S.)

Scott Bass, *Orchestra*  
(Vernon Hills H.S.)

Matthew Berzon, *Actor*  
(Deerfield H.S.)

Madeline Betsanes, *Actor*  
(Victor J. Andrew H.S.)

Belle Bilyk, *Crew*  
(Oak Park and River Forest H.S.)

Aubrey Black, *Actor*  
(Vernon Hills H.S.)

Jessica Blakely, *Actor*  
(St. Charles East H.S.)

Kevin Boes, *Orchestra*  
(Vernon Hills H.S.)

Andrew Brescia, *Crew*  
(Victor J. Andrew H.S.)

Katryce Bridges, *Actor*  
(Bloomington H.S.)

Emma Browne, *Actor*  
(Woodstock H.S.)

Jack Cahill-Lemme, *Actor*  
(Maine South H.S.)

Mia Flora Candocia, *Actor*  
(Vernon Hills H.S.)

Troy Chirico, *Actor*  
(Lake Park H.S.)

Giuliana Conte, *Crew*  
(Loyola Academy)





Daniela Crocco, *Actor*  
(Lake Zurich H.S.)

Cassandra Deck, *Orchestra*  
(Buffalo Grove H.S.)

Abhi Devathi, *Orchestra*  
(Metea Valley H.S.)

Guru Dhaliwal, *Crew*  
(William Fremd H.S.)

Haley Dirkes-Jacks, *Actor*  
(William Fremd H.S.)

Isobel Duncan, *Crew*  
(Oak Park and River Forest H.S.)

Gabriel Dzialo, *Actor*  
(Crystal Lake South H.S.)

Eleanore Fellerhoff, *Actor*  
(Deerfield H.S.)

Garrick Fernandez, *Crew*  
(Victor J. Andrew H.S.)

Cole Festenstein, *Actor*  
(Buffalo Grove H.S.)

Andrew Gardner, *Orchestra*  
(St. Rita of Cascia H.S.)

Liz Gerwick, *Crew*  
(Bloomington H.S.)

Andrew Gilson, *Actor*  
(Lockport Township H.S.)

Erick Gonzalez, *Orchestra*  
(Maine East H.S.)

Ryan Gossett, *Actor*  
(Centennial H.S.)

Logan Guttschow, *Crew*  
(Normal Community H.S.)

Edward Harris, *Crew*  
(Normal Community H.S.)

Rachel Hemm, *Crew*  
(Rolling Meadows H.S.)

Erin Hernandez, *Orchestra*  
(Glenbard West H.S.)

Molly Hernandez, *Actor*  
(Glenbard West H.S.)

Timothy Hommowun, *Orchestra*  
(St. Charles East H.S.)

Erik Hoornstra, *Crew*  
(Vernon Hills H.S.)

Zeenah Hussein, *Crew*  
(Maine East H.S.)

Adam Huston, *Orchestra*  
(Mundelein H.S.)

Kiara Irizarry, *Crew*  
(Maine South H.S.)

Kate Jarecki, *Actor*  
(Rosary H.S.)

Conor Jordan, *Actor*  
(Lake Zurich H.S.)

Alex Ketcham, *Actor*  
(Middle School North)

Scott Knier, *Orchestra*  
(Vernon Hills H.S.)

Athena Kopulos, *Actor*  
(Rolling Meadows H.S.)

Nora Kraft, *Actor*  
(Oak Park and River Forest H.S.)

Zach Kuenstle, *Orchestra*  
(Rolling Meadows H.S.)

Noah Scott Larson, *Orchestra*  
(University H.S.)

Seri Lee, *Orchestra*  
(Vernon Hills H.S.)

Derek Liavas, *Actor*  
(Maine East H.S.)

Darren Liu, *Orchestra*  
(Neuqua Valley H.S.)

Ben Love, *Actor*  
(Byron H.S.)

Matthew Magno, *Orchestra*  
(Maine East H.S.)

Sarah Marino, *Crew*  
(Glenbard North H.S.)

Nicole Miller, *Crew*  
(Niles West H.S.)

Alyssa Mohn, *Crew*  
(Carl Sandburg H.S.)

Quinn Murphy, *Actor*  
(Champaign Central H.S.)

Julia Nejman, *Crew*  
(Niles West H.S.)

Daniel Nieves, *Actor*  
(St. Patrick H.S.)

Cassandra Opeña, *Orchestra*  
(Maine East H.S.)

Brigitte Pace, *Crew*  
(Rockford Guilford H.S.)

Agata Pacia, *Crew*  
(Maine East H.S.)

Jessica Pedroza, *Actor*  
(Mother McAuley H.S.)

Anthony Radzik, *Orchestra*  
(Guerin Prep H.S.)

Jane Recker, *Orchestra*  
(Libertyville H.S.)

Devin Richard, *Crew*  
(Crystal Lake South H.S.)

Alex Roenspies, *Crew*  
(St. Charles North H.S.)

Deidra Scheunemann, *Crew*  
(Maine East H.S.)

Kendra Scheunemann, *Crew*  
(Maine East H.S.)

Helena Shaheen, *Actor*  
(Carl Sandburg H.S.)

Sarah Shanes, *Crew*  
(Vernon Hills H.S.)

Michael Shay, *Actor*  
(Naperville North H.S.)

Anetta Siemianowicz, *Orchestra*  
(Maine East H.S.)

Nora Simonson, *Crew*  
(Rolling Meadows H.S.)

Danielle Sioui, *Orchestra*  
(Rolling Meadows H.S.)

Marley Smith, *Crew*  
(Harvard H.S.)

Jack Stahl, *Orchestra*  
(Rolling Meadows H.S.)

Brandon Stalling, *Actor*  
(Waubonsie Valley H.S.)

Nigel Stokes, *Actor*  
(King College Prep)

Cameron Strandin, *Crew*  
(Rockford Guilford H.S.)

Peter Szilagyi, *Orchestra*  
(Maine East H.S.)

Molly Tomei, *Crew*  
(Richmond Burton Community H.S.)

Rebecca Townsend, *Orchestra*  
(Libertyville H.S.)

Kaitlin Triplett, *Orchestra*  
(Byron H.S.)

Maddi Weglarz-Ward, *Crew*  
(Champaign Central H.S.)

Brian Weis, *Orchestra*  
(Libertyville H.S.)

Laurel Wenckowski, *Actor*  
(Lake Zurich H.S.)

Lindsay Whisler, *Actor*  
(New Trier H.S.)

Alonte Williams, *Actor*  
(Oak Park and River Forest H.S.)

Vince Wong, *Orchestra*  
(Maine West H.S.)

Hannah Yonan, *Actor*  
(Rolling Meadows H.S.)

Diana Zhu, *Orchestra*  
(Maine East H.S.)



# FESTIVAL AT A GLANCE

## Thursday

|                  |  |                       |
|------------------|--|-----------------------|
| 6:00 pm–7:30 pm  | Opening Ceremony: On the FLY Productions LLC | KCPA Great Hall       |
| 7:30 pm–10:15 pm | PIPPIN–2015 ALL-STATE PRODUCTION             | KCPA Festival Theatre |
| 8:30 pm–10:00 pm | Opening Ceremony: On the FLY Productions LLC | KCPA Great Hall       |

## Friday

|                   |   |                                   |
|-------------------|---|-----------------------------------|
| 8:00 am–4:30 pm   | Acting Auditions  | Smith Hall 25                     |
| 8:00 am–11:20 am  | Technical Portfolio Presentations   | KCPA Studio 2AB                   |
| 8:30 am–11:00 am  | <i>A FUNNY THING HAPPENED ON THE WAY TO THE FORUM</i> –HINSDALE SOUTH HIGH SCHOOL | KCPA Playhouse Theatre            |
| 9:00 am–10:00 am  | <i>GET YOUR ACT TOGETHER: AN EVENING OF ONE-ACT PLAYS</i> –CLINTON HIGH SCHOOL    | Music Building 2100 (Aud.)        |
| 9:00 am–10:00 am  | <i>SECOND CLASS</i> –BENTON CONSOLIDATED HIGH SCHOOL                              | Smith 114 (Recital Hall)          |
| 9:00 am–10:30 am  | <i>JAMES AND THE GIANT PEACH</i> –MOLINE HIGH SCHOOL                              | Gregory Hall 112                  |
| 9:00 am–10:30 am  | <i>MUCH ADO ABOUT NOTHING</i> –NAPERVILLE NORTH HIGH SCHOOL                       | Lincoln Hall Theater              |
| 9:00 am–11:30 am  | <i>NEXT TO NORMAL</i> –VICTOR J. ANDREW HIGH SCHOOL                               | Foellinger Auditorium             |
| 9:00 am–10:10 am  | D Theatre Teachers Action Figures Game  | Illini Union B                    |
| 9:00 am–11:30 am  | A Acting Truthfully Following the Meisner Technique                               | Illini Union C                    |
| 9:00 am–10:10 am  | M Stick It! An Acting/Movement/Music Exercise                                     | Illini Union Ballroom             |
| 9:00 am–10:10 am  | T Create Your Own Original Musical  | Illini Union 314A                 |
| 9:00 am–10:10 am  | A Comedy Workshop!  | Illini Union 314B                 |
| 9:00 am–10:10 am  | A Improv Skills for Beginners   | ISR 107 (Townsend Central Lounge) |
| 9:00 am–11:30 am  | I The Care and Feeding of the Actor's (and the Teacher's) Soul                    | ISR 106 (Townsend North Lounge)   |
| 9:00 am–11:30 am  | T Getting the Best Show With the Equipment You Already Have                       | KCPA AV Room                      |
| 9:00 am–11:30 am  | C Theatre Makeup: Drag  | KCPA Choral Rehearsal Room        |
| 9:00 am–10:10 am  | A Shakespeare Off the Page!   | KCPA Dance Rehearsal Room         |
| 9:00 am–10:10 am  | A Free Your Natural Voice!  | KCPA Drama Rehearsal Room         |
| 9:00 am–10:10 am  | T Color Theory for Theatre Designers  | KCPA Ensemble B                   |
| 9:00 am–10:10 am  | M INVERTable  | KCPA Studio Theatre               |
| 9:00 am–10:10 am  | I Partnerships with High School Theatre Programs                                  | Music Building 1140               |
| 9:00 am–10:10 am  | I Theatre History: The Modified Orgy  | Music Building 1144               |
| 9:00 am–10:10 am  | A Bringing Character To Your Characters   | Music Building 1147               |
| 9:00 am–11:30 am  | A Perfecting the Audition Monologue   | Music Building 1148               |
| 9:00 am–11:30 am  | A How to REALLY Audition  | Music Building 1172               |
| 9:00 am–11:30 am  | A Creative Community: Developing Theatre for Social Dialogue                      | Music Building 1180               |
| 9:00 am–10:10 am  | S Acting the Song   | Music Building 1201               |
| 9:00 am–11:30 am  | M The Body as a Text: Introduction to Physical Theatre & Mask Work                | Nevada PKS                        |
| 9:00 am–10:10 am  | M Musical Theatre Dance   | Nevada Studio A                   |
| 9:00 am–11:30 am  | M Ballroom Dance Master Class   | Nevada Studio B                   |
| 9:00 am–10:10 am  | V Finding Your Passion Panel: Habits of Success                                   | Illini Union 407                  |
| 9:00 am–12:00 pm  | A All-Fest Improv Auditions   | Illini Union A                    |
| 9:00 am–12:00 pm  | T Underground Tech Workshop   | KCPA Prop Shop                    |
| 9:00 am–12:00 pm  | T Rolling Tech Workshops  | KCPA Scene Shop                   |
| 9:00 am–2:00 pm   | T USITT Midwest Section Tech Olympics   | KCPA Great Hall Stage             |
| 10:30 am–11:40 am | M Stick It! An Acting/Movement/Music Exercise                                     | Illini Union Ballroom             |
| 10:30 am–11:40 am | D Theatre Teachers Action Figures Game  | Illini Union B                    |
| 10:30 am–11:40 am | T Create Your Own Original Musical  | Illini Union 314A                 |
| 10:30 am–11:40 am | A Comedy Workshop!  | Illini Union 314B                 |
| 10:30 am–11:40 am | A Improv Skills for Beginners   | ISR 107 (Townsend Central Lounge) |
| 10:30 am–11:40 am | A Shakespeare Off the Page!   | KCPA Dance Rehearsal Room         |
| 10:30 am–11:40 am | A Free Your Natural Voice!  | KCPA Drama Rehearsal Room         |
| 10:30 am–11:40 am | T Color Theory for Theatre Designers  | KCPA Ensemble B                   |
| 10:30 am–11:40 am | M INVERTable  | KCPA Studio Theatre               |
| 10:30 am–11:40 am | I Partnerships with High School Theatre Programs                                  | Music Building 1140               |
| 10:30 am–11:40 am | I Theatre History: The Modified Orgy  | Music Building 1144               |
| 10:30 am–11:40 am | A Bringing Character To Your Characters   | Music Building 1147               |
| 10:30 am–11:40 am | S Acting the Song   | Music Building 1201               |
| 10:30 am–11:40 am | M Musical Theatre Dance   | Nevada Studio A                   |
| 10:30 am–11:30 am | <i>GET YOUR ACT TOGETHER: AN EVENING OF ONE-ACT PLAYS</i> –CLINTON HIGH SCHOOL    | Music Building 2100 (Aud.)        |
| 10:30 am–11:30 am | <i>SECOND CLASS</i> –BENTON CONSOLIDATED HIGH SCHOOL                              | Smith 114 (Recital Hall)          |
| 12:00 pm–1:00 pm  | <i>ONE WOMAN SHOW</i> –MATTOON HIGH SCHOOL  | Music Building 2100 (Aud.)        |
| 12:00 pm–1:00 pm  | <i>FOOT IN THE DOOR</i> –ROCKFORD LUTHERAN HIGH SCHOOL                            | Smith 114 (Recital Hall)          |
| 12:00 pm–1:10 pm  | A Playback Theatre: Your Life On Stage  | Illini Union A                    |
| 12:00 pm–1:10 pm  | A MOVE, BREATHE, MOVE! Pacing that scene and revealing that story!                | Illini Union B                    |
| 12:00 pm–1:10 pm  | A Introduction to Catfart: The Movement of Low Comedy                             | Illini Union C                    |
| 12:00 pm–1:10 pm  | A Dialect Blitz   | Illini Union Ballroom             |
| 12:00 pm–2:30 pm  | A Auditioning Like a Pro  | Illini Union 314B                 |
| 12:00 pm–1:10 pm  | D Directing with Steve Scott: A Masterclass                                       | Illini Union 407                  |
| 12:00 pm–1:10 pm  | A Acting with Your Teeth and Toenails   | ISR Multipurpose 29 B&C           |

A—Acting • C—Costuming/Makeup • D—Directing/Stage Management • I—Instructors/Teachers • M—Movement/Dance

**Friday, continued**

|                        |   |  |                                   |
|------------------------|---|--|-----------------------------------|
| 12:00 pm–1:10 pm       | P | Sketch Comedy 101  | ISR 107 (Townsend Central Lounge) |
| 12:00 pm–1:10 pm       | P | Create a Play Contest  | ISR 106 (Townsend North Lounge)   |
| 12:00 pm–1:10 pm       | T | How Do I Fly THIS?   | KCPA AV Room                      |
| 12:00 pm–2:30 pm       | C | Face On/Face Off!  | KCPA Choral Rehearsal Room        |
| 12:00 pm–1:10 pm       | M | Luigi Jazz-Dance Technique for Musical Theatre   | KCPA Dance Rehearsal Room         |
| 12:00 pm–2:30 pm       | A | Sketch Me If You Can   | KCPA Drama Rehearsal Room         |
| 12:00 pm–1:10 pm       | M | Free Spirited Improv   | KCPA Studio Theatre               |
| 12:00 pm–1:10 pm       | T | Creativity in Prop Making for the High School Drama Club                                       | KCPA Studio 2AB                   |
| 12:00 pm–1:10 pm       | T | Using Vectorworks Spotlight and Lightwright Data Exchange for your Light Plots                 | KCPA Ensemble B                   |
| 12:00 pm–1:10 pm       | D | Professional Directing—Collaboration and Flexibility are your BEST FRIENDS                     | Lincoln Hall 1027                 |
| 12:00 pm–1:10 pm       | I | Superhero on Call!: Great Stage Managers Make Great Productions                                | Lincoln Hall 1065                 |
| 12:00 pm–1:10 pm       | A | Discovering Passion Through Acting Method  | Music Building 1144               |
| 12:00 pm–1:10 pm       | A | Winging it: Now Plan it Out!   | Music Building 1147               |
| 12:00 pm–1:10 pm       | A | The Art of Auditioning   | Music Building 1172               |
| 12:00 pm–2:30 pm       | A | Improvisation Creation!  | Music Building 1148               |
| 12:00 pm–1:10 pm       | I | Theater Camp for Kids—An Amazing Fundraiser!   | Music Building 1172               |
| 12:00 pm–1:10 pm       | A | <i>The Wizard of Oz</i> Vocal Warm-Up!   | Music Building 1180               |
| 12:00 pm–1:10 pm       | V | Finding Your Passion Panel: Discovering Vocal Performance                                      | Music Building 1201               |
| 12:00 pm–2:30 pm       | M | Yoga and Movement for the Actor: Embodying Characters More Deeply                              | Nevada PKS                        |
| 12:00 pm–1:10 pm       | M | Contemporary Modern Dance  | Nevada Studio A                   |
| 12:00 pm–1:10 pm       | M | From Hopeless to Hooper in 60 Minutes!   | Nevada Studio B                   |
| 12:00 pm–1:10 pm       | V | Finding Your Passion Panel: Teacher/Technician (Lovebirds)                                     | Illini Union 407                  |
| 1:00 pm–5:00 pm        | T | Underground Tech Workshop  | KCPA Prop Shop                    |
| 1:00 pm–5:00 pm        | T | Rolling Tech Workshops   | KCPA Scene Shop                   |
| <b>1:30 pm–2:30 pm</b> |   | <b>FOOT IN THE DOOR—ROCKFORD LUTHERAN HIGH SCHOOL</b>  | <b>Smith 114 (Recital Hall)</b>   |
| 1:30 pm–2:40 pm        | A | The Art of Auditioning   | Music Building 1172               |
| 1:30 pm–2:40 pm        | A | Playback Theatre: Your Life On Stage   | Illini Union A                    |
| 1:30 pm–2:40 pm        | A | MOVE, BREATH, MOVE! Pacing that scene and revealing that story!                                | Illini Union B                    |
| 1:30 pm–2:40 pm        | A | Introduction to Catfart: The Movement of Low Comedy  | Illini Union C                    |
| 1:30 pm–2:40 pm        | A | Dialect Blitz  | Illini Union Ballroom             |
| 1:30 pm–2:40 pm        | D | Directing with Steve Scott: A Masterclass  | Illini Union 407                  |
| 1:30 pm–2:40 pm        | A | Acting with Your Teeth and Toenails  | ISR Multipurpose BC               |
| 1:30 pm–2:40 pm        | P | Sketch Comedy 101  | ISR Townsend Central Lounge       |
| 1:30 pm–2:40 pm        | P | Create a Play Contest  | ISR Townsend North Lounge         |
| 1:30 pm–2:40 pm        | T | How Do I Fly THIS?   | KCPA AV Room                      |
| 1:30 pm–2:40 pm        | M | Luigi Jazz-Dance Technique for Musical Theatre   | KCPA Dance Rehearsal              |
| 1:30 pm–2:40 pm        | S | Find Your Voice!   | KCPA Studio Theatre               |
| 1:30 pm–2:40 pm        | T | Creativity in Prop Making for the High School Drama Club                                       | KCPA Studio 2AB                   |
| 1:30 pm–2:40 pm        | T | Using Vectorworks Spotlight and Lightwright Data Exchange for your Light Plots                 | KCPA Ensemble B                   |
| 1:30 pm–2:40 pm        | D | Professional Directing—Collaboration and Flexibility are your BEST FRIENDS                     | Lincoln Hall 1027                 |
| 1:30 pm–2:40 pm        | I | Superhero on Call!: Great Stage Managers Make Great Productions                                | Lincoln Hall 1065                 |
| 1:30 pm–2:40 pm        | A | Discovering Passion Through Method Acting  | Music Building 1144               |
| 1:30 pm–2:40 pm        | A | Winging it: Now Plan it Out!   | Music Building 1147               |
| 1:30 pm–2:40 pm        | I | Theater Camp for Kids—An Amazing Fundraiser!   | Music Building 1172               |
| 1:30 pm–2:40 pm        | A | <i>The Wizard of Oz</i> Vocal Warm-Up!   | Music Building 1180               |
| 1:30 pm–2:40 pm        | M | Contemporary Modern Dance  | Nevada Studio A                   |
| 1:30 pm–2:40 pm        | M | From Hopeless to Hooper in 60 Minutes!   | Nevada Studio B                   |
| <b>1:30 pm–3:00 pm</b> |   | <b>ALMOST, MAINE—HOFFMAN ESTATES HIGH SCHOOL</b>   | <b>Gregory Hall 112</b>           |
| <b>1:30 pm–3:30 pm</b> |   | <b>TRUST—MUNDELEIN HIGH SCHOOL</b>   | <b>Lincoln Hall Theater</b>       |
| <b>1:30 pm–4:15 pm</b> |   | <b>PIPPIN—2015 ALL-STATE PRODUCTION</b>  | <b>KCPA Festival Theatre</b>      |
| <b>2:30 pm–4:15 pm</b> |   | <b>CINDERELLA (ENCHANTED EDITION)—CENTENNIAL HIGH SCHOOL</b>                                   | <b>KCPA Playhouse Theatre</b>     |
| <b>3:00 pm–4:00 pm</b> |   | <b>SHAKESPEARE 450—SAINT JOSEPH-ODGEN HIGH SCHOOL</b>  | <b>Music Building 2100 (Aud.)</b> |
| 3:00 pm–4:10 pm        | A | Creating Believable Stage Villains   | Illini Union B                    |
| 3:00 pm–4:10 pm        | T | Scenic Design and Tech Tips  | Illini Union Ballroom             |
| 3:00 pm–4:10 pm        | C | Quick-Change Pit Crew  | Illini Union 314A                 |
| 3:00 pm–4:10 pm        | A | Hello My Name is... Being a Hit from the Moment You Walk in the Audition Room!                 | Illini Union 314B                 |
| 3:00 pm–4:10 pm        | A | Preview of the 2016 All-State Production: <i>RENT</i>  | ISR Multipurpose 29 B&C           |
| 3:00 pm–4:10 pm        | A | Broken Barriers: How to Make Use of that Person Standing On Stage Next to You Most of the Time | ISR 107 (Townsend Central Lounge) |
| 3:00 pm–5:30 pm        | A | The Care and Feeding of the Actor's Soul   | ISR 106 (Townsend North Lounge)   |
| 3:00 pm–5:30 pm        | T | Pneumatics on Stage  | KCPA AV Room                      |
| 3:00 pm–4:10 pm        | T | Getting Sweet on Candy Glass: How to Break a Bottle Over your Head without Getting Hurt        | KCPA Choral Rehearsal Room        |
| 3:00 pm–4:10 pm        | A | Intercultural Shakespeare  | KCPA Dance Rehearsal Room         |
| 3:00 pm–4:10 pm        | M | TAP  | KCPA Drama Rehearsal Room         |
| 3:00 pm–4:10 pm        | A | Weaponized Stage Combat: Safety's the Thing  | KCPA Studio Theatre               |
| 3:00 pm–5:30 pm        | C | Creating Injuries with Makeup and Other Tips and Tricks of the Trade!                          | KCPA Studio Theatre Dressing Room |
| 3:00 pm–4:10 pm        | D | Stage Manager's Tool Kit   | Lincoln Hall 1060                 |
| 3:00 pm–4:10 pm        | I | College Counseling Advice for the Future Performing Arts Major                                 | Music Building 1140               |
| 3:00 pm–4:10 pm        | I | Feeding Your Students' Hungers: What Kind of Bread Will YOU Be?                                | Music Building 1144               |

P—Playwriting • S—Singing/Musical Theatre • T—Technical Theatre • V—Variety



## Friday, continued

|                         |   |  |                                   |
|-------------------------|---|--|-----------------------------------|
| 3:00 pm–4:10 pm         | P | Write a Play For Us!   | Music Building 1147               |
| 3:00 pm–4:10 pm         | A | Putting Your Singing Audition Together   | Music Building 1148               |
| 3:00 pm–4:10 pm         | V | Finding Your Passion Panel: Write Your Own Success in Theatre & Comedy                         | Illini Union 210                  |
| 3:00 pm–4:10 pm         | A | Hearts on Fire: Chakra Meditation for the Actor  | Music Building 1180               |
| 3:00 pm–4:10 pm         | A | Semi-improvised Comedy in the Italian Style: Commedia dell'Arte                                | Lincoln Hall 1027                 |
| 3:00 pm–4:10 pm         | S | R&R with Your R&R  | Music Building 1201               |
| 3:00 pm–4:10 pm         | M | Contact Improvisation  | Nevada PKS                        |
| 3:00 pm–4:10 pm         | A | Old School Clowning Around: An Exploration of Classic Clowning                                 | Nevada Studio A                   |
| 3:00 pm–4:10 pm         | M | The Best of <i>Spamalot</i> in 70 Minutes  | Nevada Studio B                   |
| 3:00 pm–4:10 pm         | V | Finding Your Passion Panel: A Director's Wisdom and Wit: A Conversation with Steve Scott       | Illini Union 407                  |
| <b>3:00 pm–5:00 pm</b>  |   | <b>SHREK THE MUSICAL–SAINT IGNATIUS COLLEGE PREP</b>   | <b>Foellinger Auditorium</b>      |
| <b>4:30 pm–5:30 pm</b>  |   | <b>SHAKESPEARE 450–SAINT JOSEPH-ODGEN HIGH SCHOOL</b>  | <b>Music Building 2100 (Aud.)</b> |
| <b>4:30 pm–5:30 pm</b>  |   | <b>CHARLOTTE'S WEB–HARRISBURG HIGH SCHOOL</b>  | <b>Smith 114 (Recital Hall)</b>   |
| 4:30 pm–5:40 pm         | A | Creating Believable Stage Villains   | Illini Union B                    |
| 4:30 pm–5:40 pm         | T | Scenic Design and Tech Tips  | Illini Union Ballroom             |
| 4:30 pm–5:40 pm         | C | Quick-Change Pit Crew  | Illini Union 314A                 |
| 4:30 pm–5:40 pm         | A | Hello My Name is... Being a Hit from the Moment You Walk in the Audition Room!                 | Illini Union 314B                 |
| 4:30 pm–5:40 pm         | A | Preview of the 2016 All-State Production: <i>RENT</i>  | ISR Multipurpose 29 B&C           |
| 4:30 pm–5:40 pm         | A | Broken Barriers: How to Make Use of that Person Standing On Stage Next to You Most of the Time | ISR 107 (Townsend Central Lounge) |
| 4:30 pm–5:30 pm         | I | Graduate Class: Theatre as an Interscholastic Activity (THD 493.01)                            | KCPA CAD Lab                      |
| 4:30 pm–5:40 pm         | T | Getting Sweet on Candy Glass: How to Break a Bottle Over your Head without Getting Hurt        | KCPA Choral Rehearsal Room        |
| 4:30 pm–5:40 pm         | A | Intercultural Shakespeare  | KCPA Dance Rehearsal Room         |
| 4:30 pm–5:40 pm         | M | TAP  | KCPA Drama Rehearsal Room         |
| 4:30 pm–5:40 pm         | A | Weaponed Stage Combat: Safety's the Thing  | KCPA Studio Theatre               |
| 4:30 pm–5:40 pm         | I | College Counseling Advice for the Future Performing Arts Major                                 | Music Building 1140               |
| 4:30 pm–5:40 pm         | I | Feeding Your Students' Hungers: What Kind of Bread Will YOU Be?                                | Music Building 1144               |
| 4:30 pm–5:40 pm         | P | Write a Play For Us!   | Music Building 1147               |
| 4:30 pm–5:40 pm         | A | Putting Your Singing Audition Together   | Music Building 1148               |
| 4:30 pm–5:40 pm         | A | Hearts on Fire: Chakra Meditation for the Actor  | Music Building 1180               |
| 4:30 pm–5:40 pm         | A | Semi-improvised Comedy in the Italian Style: Commedia dell'Arte                                | Lincoln Hall 1027                 |
| 4:30 pm–5:40 pm         | S | R&R with Your R&R  | Music Building 1201               |
| 4:30 pm–5:40 pm         | M | Contact Improvisation  | Nevada PKS                        |
| 4:30 pm–5:40 pm         | A | Old School Clowning Around: An Exploration of Classic Clowning                                 | Nevada Studio A                   |
| 4:30 pm–5:40 pm         | M | The Best of <i>Spamalot</i> in 70 minutes  | Nevada Studio B                   |
| <b>7:00 pm–9:00 pm</b>  |   | <b>SHREK THE MUSICAL–SAINT IGNATIUS COLLEGE PREP</b>   | <b>Foellinger Auditorium</b>      |
| <b>7:15 pm–10:00 pm</b> |   | <b>PIPPIN–2015 ALL-STATE PRODUCTION</b>  | <b>KCPA Festival Theatre</b>      |
| <b>7:45 pm–10:15 pm</b> |   | <b>THE ADDAMS FAMILY MUSICAL–WAUCONDA HIGH SCHOOL</b>  | <b>KCPA Playhouse Theatre</b>     |
| <b>8:00 pm–9:00 pm</b>  |   | <b>SHAKESPEARE 450–SAINT. JOSEPH-ODGEN HIGH SCHOOL</b>   | <b>Music Building 2100 (Aud.)</b> |
| <b>8:00 pm–9:00 pm</b>  |   | <b>CHARLOTTE'S WEB–HARRISBURG HIGH SCHOOL</b>  | <b>Smith 114 (Recital Hall)</b>   |
| <b>8:00 pm–9:30 pm</b>  |   | <b>AIR GUITAR HIGH–DEERFIELD HIGH SCHOOL</b>   | <b>Lincoln Hall Theater</b>       |
| <b>8:00 pm–9:45 pm</b>  |   | <b>MARY ZIMMERMAN'S METAMORPHOSES–NICHOLAS SENN HIGH SCHOOL–SENN ARTS</b>                      | <b>Gregory Hall 112</b>           |
| 8:00 pm–9:30 pm         |   | All-Fest Improv Show   | KCPA Great Hall                   |
| 9:45 pm–11:45 pm        |   | Movie: <i>Frozen</i> (2013)  | Noyes Lab 100                     |
| 10:00 pm–11:30 pm       |   | Improv Mafia   | KCPA Great Hall                   |
| 10:00 pm–11:45 pm       |   | Sponsors' Reception  | Illini Union Ballroom             |
| 10:00 pm–11:45 pm       |   | Bowling, Billiards, and Video Games  | Illini Union, Lower Level         |
| 10:00 pm–11:45pm        |   | Student Dance  | Illini Union ABC                  |

## Saturday

|                   |   |   |                                   |
|-------------------|---|---|-----------------------------------|
| 10:00 am–11:10 am | A | Take Your Improv to the Next Level  | Illini Union A                    |
| 10:00 am–11:10 am | D | Directing in 21st Century: the Power of the iPad  | Illini Union B                    |
| 10:00 am–12:30 pm | A | Speak the FOCUSED Speech I Pray You!  | Illini Union C                    |
| 10:00 am–11:10 am | A | Speaking Shakespeare: Demystifying the Language of the Bard                             | Illini Union Ballroom             |
| 10:00 am–11:10 am | P | The Writing of <i>Foot in the Door</i> : Learn How to Write Your Own Mystery Play       | Illini Union 314A                 |
| 10:00 am–11:10 am | V | Finding Your Passion Panel: Careers in Chicago Theatre                                  | Illini Union 314B                 |
| 10:00 am–11:10 am | V | Finding Your Passion Panel: From the Ground Up with Michael Halberstam                  | Illini Union 407                  |
| 10:00 am–11:10 am | A | Be Your Best in 90 Seconds or Less: Choosing and Performing your Best Audition Material | ISR Multipurpose 29 B&C           |
| 10:00 am–11:10 am | A | Adding Fuel to the Fire: Giving Voice to Juicy Language                                 | ISR 107 (Townsend Central Lounge) |
| 10:00 am–11:10 am | I | Motivating Performers to Achieve Excellence   | ISR 106 (Townsend North Lounge)   |
| 10:00 am–11:10 am | T | Projection Design for Live Performance  | KCPA AV Room                      |
| 10:00 am–12:30 pm | C | The Walking Dead Makeup Course  | KCPA Choral Rehearsal Room        |
| 10:00 am–11:10 am | M | Fosse Fever: A Look into Bob Fosse's Groundbreaking Number "Steam Heat"                 | KCPA Dance Rehearsal Room         |
| 10:00 am–11:10 am | A | Monologues: A Masterclass on How to Do Them   | KCPA Studio 1                     |
| 10:00 am–11:10 am | M | Stylized Movement for Non-Dancers: Chair Duets  | KCPA Studio 2AB                   |
| 10:00 am–11:10 am | A | Acting Your Audition Song   | KCPA Studio Theatre               |
| 10:00 am–11:10 am | V | Finding Your Passion Panel: Careers in Tech   | Illini Union 210                  |
| 10:00 am–11:10 am | A | How-To's for Hollywood Auditions  | Lincoln Hall 1065                 |
| 10:00 am–11:10 am | I | Straight Talk about Preparing Your Students for College                                 | Music Building 1140               |

A—Acting • C—Costuming/Makeup • D—Directing/Stage Management • I—Instructors/Teachers • M—Movement/Dance





**Saturday, continued**

|                          |   |   |                                   |
|--------------------------|---|---|-----------------------------------|
| 10:00 am–11:10 am        | P | Playwriting Dynamic and Complex Characters  | Music Building 1144               |
| 10:00 am–11:10 am        | C | Red Hot Designs on a Dime   | Music Building 1147               |
| 10:00 am–11:10 am        | T | Why Knot?   | Music Building 1148               |
| 10:00 am–11:10 am        | A | On-Camera Acting and Auditioning  | Music Building 1172               |
| 10:00 am–11:10 am        | A | Monologue Intensive   | Music Building 1180               |
| 10:00 am–11:10 am        | D | Direct Your Own Scene   | Music Building 1201               |
| 10:00 am–11:10 am        | S | Sing Your Character's Song  | Music Building 2100 (Aud.)        |
| 10:00 am–11:10 am        | M | Yoga and Pilates for the Theatre Life   | Nevada PKS                        |
| 10:00 am–11:10 am        | M | Supercalifragilisticexpialidocious!   | Nevada Studio A                   |
| 10:00 am–11:10 am        | M | Russian Movement Madness!   | Nevada Studio B                   |
| 10:00 am–12:00 pm        | T | Underground Tech Workshop   | KCPA Prop Shop                    |
| 10:00 am–12:00 pm        | T | Rolling Tech Workshops  | KCPA Scene Shop                   |
| 10:00 am–3:00 pm         | T | Flying FX 101   | KCPA Studio Theatre               |
| <b>10:00 am–12:30 pm</b> |   | <b>LITTLE WOMEN: THE MUSICAL—URBANA HIGH SCHOOL</b>                                     | <b>Foellinger Auditorium</b>      |
| <b>10:00 am–12:30 pm</b> |   | <b>CELEBRATION—EDWARDSVILLE HIGH SCHOOL</b>   | <b>KCPA Playhouse Theatre</b>     |
| <b>10:15 am–1:00 pm</b>  |   | <b>PIPPIN—2015 ALL-STATE PRODUCTION</b>   | <b>KCPA Festival Theatre</b>      |
| <b>10:15 am–12:15 pm</b> |   | <b>RADIUM GIRLS—LAKE PARK HIGH SCHOOL</b>   | <b>Gregory Hall 112</b>           |
| <b>10:15 am–12:15 pm</b> |   | <b>AN ALMOST PERFECT PERSON—NILES NORTH HIGH SCHOOL</b>                                 | <b>Lincoln Hall Theater</b>       |
| 11:30 am–12:40 pm        | A | Take Your Improv to the Next Level  | Illini Union A                    |
| 11:30 am–12:40 pm        | D | Directing in 21st Century: the Power of the iPad  | Illini Union B                    |
| 11:30 am–12:40 pm        | A | Speaking Shakespeare: Demystifying the Language of the Bard                             | Illini Union Ballroom             |
| 11:30 am–12:40 pm        | P | The Writing of <i>Foot in the Door</i> : Learn How to Write Your Own Mystery Play       | Illini Union 314A                 |
| 11:30 am–12:40 pm        | A | Be Your Best in 90 Seconds or Less: Choosing and Performing your Best Audition Material | ISR Multipurpose BC               |
| 11:30 am–12:40 pm        | A | Adding Fuel to the Fire: Giving Voice to Juicy Language                                 | ISR 107 (Townsend Central Lounge) |
| 11:30 am–12:40 pm        | I | Motivating Performers to Achieve Excellence   | ISR 106 (Townsend North Lounge)   |
| 11:30 am–12:40 pm        | T | Projection Design for Live Performance  | KCPA AV Room                      |
| 11:30 am–12:40 pm        | M | Fosse Fever: A Look into Bob Fosse's Groundbreaking Number "Steam Heat"                 | KCPA Dance Rehearsal Room         |
| 11:30 am–12:40 pm        | A | Monologues: A Masterclass on How to Do Them   | KCPA Studio 1                     |
| 11:30 am–12:40 pm        | M | Stylized Movement for Non-Dancers: Chair Duets  | KCPA Studio 2AB                   |
| 11:30 am–12:40 pm        | A | Acting Your Audition Song   | KCPA Studio Theatre               |
| 11:30 am–12:40 pm        | A | How-To's for Hollywood Auditions  | Lincoln Hall 1065                 |
| 11:30 am–12:40 pm        | I | Straight Talk about Preparing Your Students for College                                 | Music Building 1140               |
| 11:30 am–12:40 pm        | P | Playwriting Dynamic and Complex Characters  | Music Building 1144               |
| 11:30 am–12:40 pm        | C | Red Hot Designs on a Dime   | Music Building 1147               |
| 11:30 am–12:40 pm        | T | Why Knot?   | Music Building 1148               |
| 11:30 am–12:40 pm        | A | On-Camera Acting and Auditioning  | Music Building 1172               |
| 11:30 am–12:40 pm        | A | Monologue Intensive   | Music Building 1180               |
| 11:30 am–12:40 pm        | D | Direct Your Own Scene   | Music Building 1201               |
| 11:30 am–12:40 pm        | S | Sing Your Character's Song  | Music Building 2100 (Aud.)        |
| 11:30 am–12:40 pm        | M | Yoga and Pilates for the Theatre Life   | Nevada PKS                        |
| 11:30 am–12:40 pm        | M | Supercalifragilisticexpialidocious!   | Nevada Studio A                   |
| 11:30 am–12:40 pm        | M | Russian Movement Madness!   | Nevada Studio B                   |
| 1:00 pm–2:10 pm          | A | Designers and Actors (Make) Play Together   | Illini Union Ballroom             |
| 1:00 pm–3:30 pm          | A | College Audition Monologue Masterclass  | Illini Union 314A                 |
| 1:00 pm–2:10 pm          | A | Simply Stanislavski: Objectives in Action   | ISR Multipurpose 29 B&C           |
| 1:00 pm–2:10 pm          | T | The LED Theatrical Solution—As Easy as 1,2,3,4  | KCPA AV Room                      |
| 1:00 pm–2:10 pm          | A | Secrets of the Working Actor  | KCPA Studio 2AB                   |
| 1:00 pm–2:10 pm          | S | Energizing Your Voice   | Music Building 1144               |
| 1:00 pm–2:10 pm          | C | Pepakura or Papercrafting for Stage and Cosplay: Crafts, Costumes, and Props            | Music Building 1147               |
| 1:00 pm–2:10 pm          | A | Healthy Singing Habits for Musical Theatre Performers                                   | Music Building 1148               |
| 1:00 pm–2:10 pm          | A | No Scripts, No Sets, No Problem! The Essential Elements of Improv                       | Music Building 1180               |
| 1:00 pm–2:10 pm          | P | Make People Laugh (For the Right Reasons): A Crash Course in Comedy Writing             | Music Building 1201               |
| 1:00 pm–2:10 pm          | T | What is in Your Portfolio? YOU!   | KCPA Choral Rehearsal Room        |
| 1:00 pm–3:30 pm          | T | Underground Tech Workshop   | KCPA Prop Shop                    |
| 1:00 pm–3:30 pm          | T | Rolling Tech Workshops  | KCPA Scene Shop                   |
| 1:00 pm–2:10 pm          | M | All That Jazz!  | Nevada Studio A                   |
| 2:30 pm–3:40 pm          | A | Designers and Actors (Make) Play Together   | Illini Union Ballroom             |
| 2:30 pm–3:40 pm          | A | Simply Stanislavski: Objectives in Action   | ISR Multipurpose 29 B&C           |
| 2:30 pm–3:40 pm          | T | The LED Theatrical Solution—As Easy as 1,2,3,4  | KCPA AV Room                      |
| 2:30 pm–3:40 pm          | T | What is in Your Portfolio? YOU!   | KCPA Choral Rehearsal Room        |
| 2:30 pm–3:40 pm          | A | Secrets of the Working Actor  | KCPA Studio 2AB                   |
| 2:30 pm–3:40 pm          | I | Energizing Your Voice   | Music Building 1144               |
| 2:30 pm–3:40 pm          | C | Pepakura or Papercrafting for Stage and Cosplay: Crafts, Costumes, and Props            | Music Building 1147               |
| 2:30 pm–3:40 pm          | A | Healthy Singing Habits for Musical Theatre Performers                                   | Music Building 1148               |
| 2:30 pm–3:40 pm          | A | No Scripts, No Sets, No Problem! The Essential Elements of Improv                       | Music Building 1180               |
| 2:30 pm–3:40 pm          | P | Make People Laugh (For the Right Reasons): A Crash Course in Comedy Writing             | Music Building 1201               |
| 2:30 pm–3:40 pm          | M | All That Jazz!  | Nevada Studio A                   |
| <b>2:30 pm–5:15 pm</b>   | V | <b>PIPPIN—2015 ALL-STATE PRODUCTION</b>   | <b>KCPA Festival Theatre</b>      |

P—Playwriting • S—Singing/Musical Theatre • T—Technical Theatre • V—Variety



## OPENING CEREMONY/PERFORMANCE

6:00 pm–7:30 pm  
8:30 pm–10:00 pm  
KCPA Great Hall

### Festival Welcome & Introductions

Brian Alexander, 2015 Festival Executive Director

### Opening Ceremony: On the FLY Productions LLC

Join On the FLY Productions and their troupe of aerialists, dancers, flyers, actors, combatants, and tumblers on an artistic journey of the heart and mind told through a montage of acts. Together let's ignite the passion within!



On the FLY Productions LLC is a hybrid aerial entertainment and flying effects company providing everything from equipment rental to choreography and training to full production creation. On the FLY Productions is fully insured and currently has offices in Indianapolis, IN, Sarasota, FL and St. Louis, MO. Owners of On the FLY, Jason Whicker & Jennifer Kelly, met during a production of *Wizard of Oz* and 13 flying effects later a dynamic partnership was born. Together they have created numerous original shows and acts including the most recent, *The Mothmen*—as seen on this season's *America's Got Talent*. OTF's current client list include Royal Caribbean Cruise Lines, Cedar Point Amusement Park, Kingdom of Bahrain, and numerous colleges, high schools, camps, festivals, and theatre houses across the country. [www.ontheflyproductions.net](http://www.ontheflyproductions.net)



### Jason Whicker

#### Owner/President/Aerial Choreographer

Jason Whicker, singer, dancer, flying, aerial and ground choreographer, received his degree in Musical Theatre and Performance Studies from Ball State University, and has worked on Broadway and large scale productions such as **American Idiot** (formerly on Broadway), **Fame Becomes Me** (Martin Short), **Angels: The Musicals** (Broadway Bound), and other numerous professional shows throughout the world. Jason has created new works of flying art for Cisco Systems, Wrigley's 5 Gum, and the 26th Annual SEA games. Jason is a former musical theatre performer who could be seen singing in dancing in national tours of **Grease** and **Clifford the Big Red Dog** as well as regional theaters (**Rent**, **Beauty and the Beast**) and Busch Gardens Theme Parks. His most recent aerial choreography can be see on Centrum WOW shows on **Royal Caribbean Cruise Line's** Serenade and Brilliance ships as well as Cedar Point Amusement Park **Luminosity** and **Snoopy Unleashed**. He also recently performed on *America's Got Talent*. Other aerial choreography credits include performances at the **Nelson Mandela Theatre** in Johannesburg, the **Bayan Palace** in Kuwait for the **50th Anniversary of Kuwait's Liberation**. Jason's experience in Stage Combat also includes recognition from the **Society of American Fight Directors** as an Advanced Actor Combatant in 7 of the 8 weapons.





**Jennifer Ragan Kelly**  
**Vice President/Producer/Director**

Jennifer Kelly, daughter of a director and Thespian Sponsor, literally grew up in the back of a theatre making her stage debut at the age of four and has been directing for over twenty years. Most recently, she produced and directed The Mothmen Dance act on *America's Got Talent!* Jennifer has directed and produced over a hundred productions after receiving her BA at Principia College in Theatre under Richard Morse (founder of the Richard Morse Mime Theatre) and MA from CCU in Denver, CO. After teaching high school theatre in Florida for over ten years, and bringing Mainstage shows to both the Florida State Thespian Festival and Internationals, she now serves on numerous advisory entertainment boards across the globe and is actively involved with theatrical and Thespian organizations. Kelly specializes in creating, producing, and directing new works of art working with theatres, conferences, colleges, and schools across the country to create unique aerial entertainment, and currently has numerous projects in the works such as the original flying show, **BEAUTIFUL: A Cirque-Tale of how the butterfly grew her wings** and **CAVALLO!** Kelly is also currently serving as Executive Director of a brand new state of the art hybrid performing arts venue for the Axis Ventures Enterplex project, and is a Senior Partner, Production and Entertainment Director for There is No Sky, LLC.

## COLLEGE AUDITIONS



### Performance Auditions and Technical Portfolio Presentation Meetings

All students registered for college/university performance auditions or technical portfolio presentations are required to attend a short meeting in their respective audition/presentation spaces *30 minutes before their scheduled audition/presentation time*. Students were informed of their audition/presentation times in December. Please check the Festival website ([www.illinoistheatrefest.org](http://www.illinoistheatrefest.org)) for the audition/presentation schedule.

### Friday

**8:00 am–4:30 pm**  
Music Building  
Smith Hall 25

### Acting Auditions

For graduating high school students who preregistered to audition for performance programs at over 25 different Midwest colleges and universities. Please note: Auditionees who are singing and performing a monologue will sing first and perform their monologue second.

**8:00 am–11:20 am**  
KCPA Studio 2AB

### Technical Portfolio Presentations

For graduating high school students who preregistered to present their tech portfolios to theatre reps from over 15 different Midwest colleges and universities.



## FRIDAY EVENING ACTIVITIES

**8:00 pm–9:30 pm**  
KCPA Great Hall

### **All-Fest Improv Show**

Are you ready for this? Select participants from this morning's Improv workshops, led by Champaign-Urbana's Zoo Improv, will perform for you! See the amazing—and hilarious—results of three hours of bonding/rehearsing as participants explore the realms of improvisational theatre. This is not a ticketed event. Come one, come all to experience some of the best improv artists in the state!

**9:45 pm–11:45 pm**  
Noyes Lab 100

### **Movie: *Frozen* (2013)**

When a princess with the power to turn things into ice curses her home in infinite winter, her sister, Anna teams up with a mountain man, his playful reindeer, and a snowman to change the weather condition. Run time: 102 minutes

**10:00 pm–11:30 pm**  
KCPA Great Hall

### **Improv Mafia**

The Improv Mafia is Illinois State University's first and only improv group. It was created in 1998 by Mikel Matthews, and has since grown to become recognized as one of the best college improv groups in the country. In the heart of Illinois State's campus in Normal, IL, they provide improv shows every Tuesday night. The group has evolved over the years from performing mainly short form games to providing a unique hybrid of short form, long form, musical, and other experimental forms in their weekly one hour shows. Aside from their traditional Tuesday night shows, they have expanded their repertoire by performing and doing workshops for conferences, fund-raisers, schools, and the Illinois High School Theatre Festival, as well as many other places. The team is trained extensively in coordinating workshops that teach improv fundamentals to students, improvisers, and even business professionals. Mafia also takes their skills and knowledge with them when they compete and rank nationally each year at the College Improv Tournament.

**10:00 pm–11:45 pm**  
Illini Union Ballroom  
(2nd Floor)

### **Sponsors' Reception**

The University of Illinois at Urbana-Champaign Department of Theatre and the Illinois Theatre Association will host a reception with hors d'oeuvres and beverages in the Ballroom on the second floor of the Illini Union. All teachers, sponsors, exhibitors, and workshop leaders are invited to share refreshments and network with peers and members of the Illinois Theatre Association.

**10:00 pm–11:45 pm**  
Illini Union, Lower Level

### **Bowling, Billiards, and Video Games**

There is an additional cost for these activities. Festival name badges must be worn at all times to participate.

**10:00 pm–11:45 pm**  
Illini Union Room ABC

### **Student Dance**

Students must be wearing a wristband to enter. Wristbands are \$5 and are ONLY available for purchase before 9:30 pm Friday at FESTGEAR in the KCPA lobby. Wristbands will NOT be sold at the entrance to the dance. Festival name badges must be worn at all times to participate.



## PRODUCTION DESCRIPTIONS

Thurs. 7:30 pm–10:15 pm  
 Fri. 1:30 pm–4:15 pm  
 Fri. 7:15 pm–10:00 pm  
 Sat. 10:15 am–1:00 pm  
 Sat. 2:30 pm–5:15 pm  
 KCPA Festival Theatre

### **PIPPIN**—ALL-STATE PRODUCTION

Music and Lyrics by Stephen Schwartz; Book by Roger O. Hirson  
 Directed by Karen M. Hall

A troupe of players uses illusion and circus to tell the story of Pippin, a young prince on a death-defying journey as he searches for the secret to true happiness and fulfillment. He seeks it in the glories of the battlefield, the temptations of the flesh and the intrigues of political power. Will he choose a happy but simple life? Or will he risk everything for a singular flash of glory?

Fri. 7:45 pm–10:15 pm  
 KCPA Playhouse Theatre

### **THE ADDAMS FAMILY MUSICAL**—WAUCONDA HIGH SCHOOL

Music and Lyrics by Andrew Lippa; Book by Marshall Brickman and Rick Elice  
 Directed by Scott Metzger

*The Addams Family Musical* features an original story, and it's every father's nightmare. Wednesday Addams, the ultimate princess of darkness, has grown up and fallen in love with a sweet, smart young man from a respectable family—a man her parents have never met. And if that weren't upsetting enough, Wednesday confides in her father and begs him not to tell her mother. Now, Gomez Addams must do something he's never done before—keep a secret from his beloved wife, Morticia. Everything will change for the whole family on the fateful night they host a dinner for Wednesday's 'normal' boyfriend and his parents.

Fri. 8:00 pm–9:30 pm  
 Lincoln Hall Theater

### **AIR GUITAR HIGH**—DEERFIELD HIGH SCHOOL

by Laura Schellhardt  
 Directed by Susan Gorman

Nothing happens in Scrug, Iowa—until the Regional Air Guitar Championships come through town. Armed with a camera and determined to document the competitors, Cable and Lindy jump into interviewing the hopefuls and catching the drama. *Air Guitar High* is a high-octane story about a group of teenagers ready to take their futures into their hands. Literally.

Fri. 1:30 pm–3:00 pm  
 Gregory Hall 112

### **ALMOST, MAINE**—HOFFMAN ESTATES HIGH SCHOOL

by John Cariani  
 Directed by Christina Ordonez

*Almost, Maine* is a wonderful mix of love stories. When we experience love, it is a moment when we don't know what will happen next. Some moments are happy and others sad, but in each moment the characters' lives are changed. These nine vignettes encompass all of love. Oh the feels!

Sat. 10:15 am–12:15 pm  
 Lincoln Hall Theater

### **AN ALMOST PERFECT PERSON**—NILES NORTH HIGH SCHOOL

by Judith Ross  
 Directed by Timothy Ortmann

It's election night in New York City! The votes have been cast, a candidate has been chosen ... but that's not the only thing afoot in this fast-paced romantic comedy! Our lovely candidate puts her life back together in this intelligent, amusing romp in New York's Upper West Side.

Sat. 10:00 am–12:30 pm  
 KCPA Playhouse Theatre

### **CELEBRATION**—EDWARDSVILLE HIGH SCHOOL

Music by Harvey Schmidt; Book & Lyrics by Tom Jones  
 Directed by Kate Motley

*Celebration* is not a typical upbeat musical comedy. This allegorical fable symbolizes the struggles between youth and old age, love and ambition, poverty and wealth, and more. The award-winning team of Tom Jones and Harvey Schmidt, creators of *The Fantastiks*, the longest running musical in the world, give us the book and music for *Celebration*.



## Production Descriptions, continued

|   |   |
|---|---|
| <b>Fri. 4:30 pm–5:30 pm</b><br><b>Fri. 8:00 pm–9:00 pm</b><br>Smith 114 (Recital Hall)      | <b><i>CHARLOTTE’S WEB</i></b> —HARRISBURG HIGH SCHOOL<br>by Joseph Robinette; based on the story by E.B. White<br>Directed by Hannah Drake<br><i>Charlotte’s Web</i> is the live retelling of E. B. White’s timeless story. Join Fern, Templeton, Charlotte and, of course, Wilbur as they deal with friendship and real life issues. Don’t miss this classic show.   |
| <b>Fri. 2:30 pm–4:15 pm</b><br>KCPA Playhouse Theatre                                       | <b><i>CINDERELLA (ENCHANTED EDITION)</i></b> —CENTENNIAL HIGH SCHOOL<br>Music, Book and Lyrics by Rodgers and Hammerstein<br>Directed by Suzanne Aldridge<br>Rodgers and Hammerstein’s <i>Cinderella (Enchanted Edition)</i> brings to life through beautiful music, dancing, and colorful costumes, a world with a universal dream. What girl doesn’t at some point in her life want to be treated like a princess? What young man doesn’t want to be a prince? Who doesn’t want a life that ends happily ever after, where dreams and wishes all come true? “It’s possible, things are happening every day!”  |
| <b>Fri. 12:00 pm–1:00 pm</b><br><b>Fri. 1:30 pm–2:30 pm</b><br>Smith 114 (Recital Hall)     | <b><i>FOOT IN THE DOOR</i></b> —ROCKFORD LUTHERAN HIGH SCHOOL<br>by Michele M. Brackett-Bonzi<br>Directed by Michele M. Brackett-Bonzi<br>Have you ever seen a lone shoe on the road or somewhere and wondered what happened to its mate or who it belongs to? What would happen if you decided to place an ad to see who it belonged to? See how several friends decide to do just that and the mystery which unfolds. This mystery delivers a powerful message of the dangers lurking online. It is full of twists and turns that will leave you on the edge of your seat!  |
| <b>Fri. 8:30 am–11:00 am</b><br>KCPA Playhouse Theatre                                      | <b><i>A FUNNY THING HAPPENED ON THE WAY TO THE FORUM—</i></b><br>HINSDALE SOUTH HIGH SCHOOL<br>Music and Lyrics by Stephen Sondheim; Book by Burt Shevelove and Larry Gelbert<br>Directed by Danny Yuska<br><i>A Funny Thing Happened on the Way to the Forum</i> is a non-stop laugh-fest in which Pseudolus, a crafty slave, struggles to win the hand of a beautiful but slow-witted courtesan named Philia, for his young master, Hero, in exchange for freedom. This show includes plot twists and turns with cases of mistaken identity, slamming doors, and a courtesan or two. This unforgettable, hysterical musical allows a terrific ensemble of comedic actors to shine—“something for everyone, a comedy tonight!” |
| <b>Fri. 9:00 am–10:00 am</b><br><b>Fri. 10:30 am–11:30 am</b><br>Music Building 2100 (Aud.) | <b><i>GET YOUR ACT TOGETHER: AN EVENING OF ONE-ACT PLAYS</i></b> —CLINTON HIGH SCHOOL<br>by Peter Tarsi, Jonathan Rand, and Rich Orlaff<br>Student Directed by Alek McMath, Rachel Borland, and Lauren Henson<br><i>Get Your Act Together</i> is made up of three student-directed one-act plays including one drama and two comedies. Each play will take you to a familiar setting, but nothing is quite like you would expect.   |
| <b>Fri. 9:00 am–10:30 am</b><br>Gregory Hall 112  | <b><i>JAMES AND THE GIANT PEACH</i></b> —MOLINE HIGH SCHOOL<br>by Roald Dahl and Richard George<br>Directed by Kathleen Griesenbeck<br>Join James and his insect friends on a wild and wonderful adventure inside the giant peach!  |



## Production Descriptions, continued

**Sat. 10:00 am–12:30 pm**  
Foellinger Auditorium

***LITTLE WOMEN: THE MUSICAL*—URBANA HIGH SCHOOL**

Music by Jason Howland; Book by Allan Knee; Lyrics by Mindi Dickstein

Directed by Tim Broeker

Based on Louisa May Alcott's classic 1869 semi-autobiographical novel, *Little Women: The Musical* focuses on the four March sisters — brassy, tomboy-like, aspiring writer Jo, romantic Meg, pretentious Amy, and kind-hearted Beth — and their beloved Marmee, at home in Concord, Massachusetts while the family patriarch is away serving as a Union Army Chaplain during the Civil War. Intercut with the vignettes in which their lives unfold are several recreations of the melodramatic short stories Jo writes in her attic studio.

**Fri. 8:00 pm–9:45 pm**  
Gregory Hall 112

***MARY ZIMMERMAN'S METAMORPHOSES*—NICHOLAS SENN HIGH SCHOOL—SENN ARTS**  
by Mary Zimmerman

Directed by Joel Ewing and Michelle Moe

Mary Zimmerman's *Metamorphoses* is a collection of Ovid's Greek myths and brings his tales to stunning visual life. It juxtaposes the ancient and the contemporary in both language and image to reflect the variety and persistence of narrative in the face of an inevitable change. Using the aesthetic approach of transformation, this production is set in and around tiny kiddie pools of water on stage to represent the sea, swim noodles become weapons of war, and shower loofahs are picked like daisies from fields afar.

**Fri. 9:00 am–10:30 am**  
Lincoln Hall Theater

***MUCH ADO ABOUT NOTHING*—NAPERVILLE NORTH HIGH SCHOOL**

by William Shakespeare

Directed by Andy Simon

*Much ADO About Nothing* is a timeless classic of comedic and dramatic suspense and gives us, in the bantering Beatrice and Benedick, two of Shakespeare's wittiest lovers. It is made more fun by being set in California during the groovy 1960s.

**Fri. 9:00 am–11:30 am**  
Foellinger Auditorium

***NEXT TO NORMAL*—VICTOR J. ANDREW HIGH SCHOOL**

Music by Tom Kitt; Book and Lyrics by Brian Yorkey

Directed by Chris Moan

*Next to Normal* is truly a story about love, loss, and hope. The action focuses on the Goodman family, who are real people leading normal lives. The show depicts how the characters must deal with their collective realities in an effort to coexist despite battling mental health issues.

**Fri. 12:00 pm–1:00 pm**  
Music Building 2100 (Aud.)

***ONE WOMAN SHOW*—MATTOON HIGH SCHOOL**

by Cornelia Otis Skinner

Directed by Rebecca Nevius

With just a few props and a bare stage, these monologues provide a truthful and telling insight into the lives of women. A mother trying to help her son with his math homework, a woman trying to keep hold of the spirit of Christmas, a cruel old woman dominating other people's lives for her own convenience, and several other women share their stories in an unforgettable performance.

**Sat. 10:15 am–12:15 pm**  
Gregory Hall 112

***RADIUM GIRLS*—LAKE PARK HIGH SCHOOL**

by D.W. Gregory

Directed by Kathy Weber

In the 1920s, radium-painted watch dials were all the rage, until the women who painted them became mysteriously ill. Grace Fryer, one of the "radium girls," must fight for justice, even when battling those she loves.



## Production Descriptions, continued

|   |  |
|---|--|
| <b>Fri. 9:00 am–10:00 am</b><br><b>Fri. 10:30 am–11:30 am</b><br>Smith 114 (Recital Hall)                               | <b>SECOND CLASS</b> –BENTON CONSOLIDATED HIGH SCHOOL<br>by Brad Slaight<br>Directed by Traci Trill<br>This play shows what high school is really all about, both the good and the bad. Watch as each character learns valuable lessons outside of the classroom.   |
| <b>Fri. 3:00 pm–4:00 pm</b><br><b>Fri. 4:30 pm–5:30 pm</b><br><b>Fri. 8:00 pm–9:00 pm</b><br>Music Building 2100 (Aud.) | <b>SHAKESPEARE 450</b> –SAINT JOSEPH-ODGEN HIGH SCHOOL<br>by various authors<br>Directed by Larry Williams<br>April 23, 2014 marked what would have been Shakespeare's 450th birthday. <i>Shakespeare 450</i> is a whimsical romp, celebrating the Bard via "Comedy of Errors", "Macbeth Mixed Up", "Shakespeare's Greatest Hits", and "The Romeo and Juliet Rag." Happy Birthday, William Shakespeare!  |
| <b>Fri. 3:00 pm–5:00 pm</b><br><b>Fri. 7:00 pm–9:00 pm</b><br>Foellinger Auditorium                                     | <b>SHREK THE MUSICAL</b> –SAINT IGNATIUS COLLEGE PREP<br>Music by Jeanine Tesori; Book and Lyrics by David Lindsay-Abaire<br>Directed by Kevin Bellie<br>Based on the Oscar-winning DreamWorks Animation film, <i>Shrek The Musical</i> is a TONY Award-winning fairy tale adventure featuring all new songs and a sidesplitting book. <i>Shrek The Musical</i> brings all the beloved characters you know from the film to life on stage, and proves there's more to the story than meets the ears. |
| <b>Fri. 1:30 pm–3:30 pm</b><br>Lincoln Hall Theater   | <b>TRUST</b> –MUNDELEIN HIGH SCHOOL<br>by David Schwimmer and Andy Bellin<br>Directed by Jonathan Meier<br>(World High School Premiere of this unpublished play)<br><i>Trust</i> is the story of a seemingly innocent online encounter that threatens to unravel the fabric of an American family, when their 14-year-old daughter is manipulated into an illegal sexual relationship with a man she meets on the internet.  |



## WORKSHOP DESCRIPTIONS

### **A** Acting | Friday

**9:00 am–12:00 pm**  
Illini Union A

#### **All-Fest Improv Auditions**

Hosted by Zoo Improv

Calling all improv fanatics! Come join Champaign-Urbana's Zoo Improv for this fast-paced, high-energy audition for the All-Fest Improv Team! Auditionees should plan on spending their morning at the workshop audition. Then, select participants will be invited to be a part of the team and will return for an afternoon rehearsal and performance. If selected, students must have Friday afternoon available to rehearse and Friday evening at 8:00 pm to perform in KCPA Great Hall for an audience of your peers!

**9:00 am–11:30 am**  
Illini Union C  
Capacity: 20  
(+30 observers)

#### **Acting Truthfully Following the Meisner Technique**

Jo Slowik, Lewis University

Sanford Meisner said that, 'acting is the ability to live truthfully under imaginary circumstances.' The basic exercise that Meisner invented to train the actor's responses is called the Repetition Exercise. In this workshop, actors will respond to each other through a repeated phrase. Through this exercise, the actor stops thinking of what to say and do, and responds more freely and spontaneously, both physically and vocally.

**9:00 am–10:10 am**  
**10:30 am–11:40 am**  
Illini Union 314B  
Capacity: 50

#### **Comedy Workshop!**

Jay Fontanetta, Metea Valley High School

Dying is easy; comedy is hard! Learn the "rules" of comedy and practice making choices that will leave your audience laughing. Join us for this hands-on, audience participation workshop!

**9:00 am–10:10 am**  
**10:30 am–11:40 am**  
ISR 107 (Townsend  
Central Lounge)  
Capacity: 50

#### **Improv Skills for Beginners**

Patrick Deane, Lockport Township High School

Come and learn the basics of improv comedy and skills that can assist in performances and sketch writing.

**9:00 am–10:10 am**  
**10:30 am–11:40 am**  
KCPA Dance Rehearsal Rm  
Capacity: 20  
(+20 observers)

#### **Shakespeare Off the Page!**

Krista Wachob, Shakespeare Off the Page

Get on your feet and bring Shakespeare to life! Start with an unknown Shakespeare text and electrify it in one workshop or less. Fear Shakespeare no more. Come ready to play.

**9:00 am–10:10 am**  
**10:30 am–11:40 am**  
KCPA Drama Rehearsal Rm  
Capacity: 50  
(+20 observers)

#### **Free Your Natural Voice!**

Diane Timmerman, Department of Theatre, University of Illinois at Urbana-Champaign

This hands-on experiential workshop is designed to give your voice more expressiveness, ease, power, and subtlety. Learn easy-to-do exercises that you can use right before auditions or performances. Please note this fun workshop will focus on the SPEAKING rather than the singing voice!



## **A Friday, continued**

**9:00 am–10:10 am**  
**10:30 am–11:40 am**  
Music Building 1147  
Capacity: 20

### **Bringing Character To Your Characters**

Mikel Matthews, Rantoul Township High School

In this workshop, we'll be using a collaborative exercise to easily help create characters with depth. Participants will also create and explore the links between characters. This technique works very well with choruses and ensembles.

**9:00 am–11:30 am**  
Music Building 1148  
Capacity: 20

### **Perfecting the Audition Monologue**

Thomas Quinn, Illinois Wesleyan University

In this workshop, students will get hands on advice and coaching from professional actor and director Tom Quinn. He will take students through the basics of what directors and schools look for, as well as provide excellent acting technique to make interesting, bold choices. Bring your memorized monologues and work with a pro.

**9:00 am–11:30 am**  
Music Building 1172  
Capacity: 40  
(+10 observers)

### **How to REALLY Audition**

Michael-Colin Reed, Darkhouse Entertainment

Want to improve your chances of being cast? OF COURSE YOU DO! Michael-Colin Reed teaches this hard core, intensive workshop based on Michael Shurtleff's groundbreaking book that unlocks the ultimate mystery: "What exactly are directors REALLY looking for in my audition?"

**9:00 am–11:30 am**  
Music Building 1180  
Capacity: 15

### **Creative Community: Developing Theatre for Social Dialogue**

Sara Phillips, Plano High School

"Art is not a mirror to hold up to society, but a hammer with which to shape it."  
—Bertold Brecht. In this workshop, students will explore the role of theatre in political and social activism. Using a variety of theatre activities, movement exploration, and improvisational exercises, students will have the opportunity to create a unique piece of devised theatre that addresses the social issues in the lives of the students and their communities.

**12:00 pm–1:10 pm**  
**1:30 pm–2:40 pm**  
Illini Union A  
Capacity: 100

### **Playback Theatre: Your Life On Stage**

Scott Shallenbarger, Highland Park High School

Playback Theatre is an original form of improvisational theatre in which audience members tell stories from their lives and then watch them enacted on the spot by an ensemble of actors. After one teller, another will come. In this way, the audience will experience magical, uplifting theatre of their own making. The HPHS Playback Ensemble is comprised of student actors who have trained specifically in this unique form.

**12:00 pm–1:10 pm**  
**1:30 pm–2:40 pm**  
Illini Union B  
Capacity: 20  
(+20 observers)

### **MOVE, BREATHE, MOVE! Pacing that scene and revealing that story!**

Janeve West, Cornell College

This hands-on movement based workshop will offer tips to revealing character and story through the exploration of tempo, timing, rhythm, rest, stillness, silence and physical dynamics of a scene. Perfect for actors AND DIRECTORS, we will visually convey plot twists, major moments, obstacles, and intentions by manipulating space and time.

**12:00 pm–1:10 pm**  
**1:30 pm–2:40 pm**  
Illini Union C  
Capacity: 50

### **Introduction to Catfart: The Movement of Low Comedy**

Chris Guyotte, University Laboratory High School

This workshop explores basic movements of low comedy and allows the participant to practice the movements and put them into a short context.



**A Friday, continued**

**12:00 pm–1:10 pm**

**1:30 pm–2:40 pm**

Illini Union Ballroom

Capacity: 200

**Dialect Blitz**

Alex Miller, Millikin University

Are you ready to vocally travel around the world in this fast-paced workshop? Working with a specific dialect, participants will be led through a sequence of fun and interactive sound change drills. While working with the chosen dialect, students will gain the skills necessary to develop their own method of mastering a dialect.

**12:00 pm–2:30 pm**

Illini Union 314B

Capacity: 12

(+50 observers)

**Auditioning Like a Pro**

Jaclyn Loewenstein, Class Act

Get the inside scoop on auditions from a director who has cast actors for Chicago theatres, films, and Broadway. Participants will perform a mock audition and receive feedback from the director, redirection, and tips on cold readings and audition prep. Bring a 1-minute monologue or song to perform (preferably memorized).

**12:00 pm–1:10 pm**

**1:30 pm–2:40 pm**

ISR Multipurpose 29 B&C

Capacity: 75

(+50 observers)

**Acting with Your Teeth and Toenails**

Charles Berglund, Glenbard North High School (retired)

Do you give 30% of yourself to your role? 50%? 80%? Frequently student actors give only a part of their energy and commitment to a role, and the performance reflects it. Learn techniques to develop roles fully and believably.

**12:00 pm–2:30 pm**

KCPA Drama Rehearsal Rm

Capacity: 40

(+10 observers)

**Sketch Me If You Can**

Eric Curtis, Acting Matters

Sketch comedy is fast-paced and fun. Come join us for a sketch comedy writing and performing intensive! Participants will roll up their sleeves and create several group sketches and will discover why some sketches succeed and others fail.

**12:00 pm–1:10 pm**

**1:30 pm–2:40 pm**

Music Building 1144

Capacity: 50

(+20 observers)

**Discovering Passion Through Method Acting**

Johnathan Pontarelli, Neuqua Valley High School

This informative workshop on method acting will guide students and directors in a variety of theories that they could implement in their craft. All will leave informed on the Stanislavski, Adler, Meisner, and Strasberg theories of method acting.

**12:00 pm–1:10 pm**

**1:30 pm–2:40 pm**

Music Building 1147

Capacity: 40

**Winging it: Now Plan it Out!**

Krystina Coyne and Anna Gianni, Illinois State University

Are you a master of improv, or do you wish to be? Come learn what it takes to effectively WING IT with fun improvisation games!

**12:00 pm–2:30 pm**

Music Building 1148

Capacity: 20

(+10 observers)

**Improvisation Creation!**

Kelly Wren, Plainfield School District

Improvisation has taken Chicago-comedy by storm! This workshop focuses on finding the game in a short form improv scene from a graduate of The Second City Training Center's Improv for Actors program. All who are interested in exploring the comedic art form will benefit from developing improvisation skills.

**12:00 pm–1:10 pm**

**1:30 pm–2:40 pm**

Music Building 1172

Capacity: 50

**The Art of Auditioning**

Kate Vargulich, Illinois State University

This is a workshop geared towards both straight theatre and musical theatre auditioning. A sample audition will be given, and then there will be a discussion covering all things auditioning, so bring all of your questions!



## **A** Friday, continued

**12:00 pm–1:10 pm**

**1:30 pm–2:40 pm**

Music Building 1180

Capacity: 30

(+20 observers)

### ***The Wizard of Oz* Vocal Warm-Up!**

Bethany Mangum and Emily Rieder, Northern Illinois University

Travel with all of your favorite *Wizard of Oz* characters while warming up your vocal instrument. This is a great tool to use for a group or for your own individual warm-up before a show. All teachers, students and directors are encouraged to attend!

**3:00 pm–4:10 pm**

**4:30 pm–5:40 pm**

Illini Union B

Capacity: 100

(+10 observers)

### **Creating Believable Stage Villains**

Michael Daehn, Ball State University

Anybody can play a squeaky clean, always do-good hero. It takes an actor of unique dimension and personal quirk to successfully create the role of a bonafide villain on stage. Whether playing Dracula, Captain Hook, or Shere Khan, this workshop is a checklist of shoulds and shouldn'ts designed to give your evil performance onstage a jump start in malevolence!

**3:00 pm–4:10 pm**

**4:30 pm–5:40 pm**

Illini Union 314B

Capacity: 50

(+50 observers)

### **Hello My Name is... Be a Hit from the Moment You Walk in the Audition Room!**

J.W. Morrisette and Kyle Thomas, University of Illinois at Urbana-Champaign

The first two minutes in any audition makes a huge impact on how a director sees you. This interactive workshop will help you make the best first impression. We will be giving you some hands-on experience in dealing with nervousness, introductions, and a host of other audition related issues.

**3:00 pm–4:10 pm**

**4:30 pm–5:40 pm**

ISR Multipurpose 29 B&C

Capacity: 50

### **Preview of the 2016 All-State Production: *RENT***

Dennis Anastasopoulos (Director) and Producers

An introduction to the 2016 All-State Production of *RENT—School Edition*. Come find out about the process and have your questions answered about the 2016 All-State Production.

**3:00 pm–4:10 pm**

**4:30 pm–5:40 pm**

ISR 107 (Townsend

Central Lounge)

Capacity: 16

### **Broken Barriers: How to Make Use of that Person Standing On Stage Next to You Most of the Time**

Alexandra Raffini, University of Missouri-Columbia

What better prop to have onstage than another human? Experience partner work like you never have before and see how scenes can come alive simply from building a connection with your fellow actors. Be ready to get up close and personal with people you've never met; TMI is about to become your best friend.

**3:00 pm–5:30 pm**

ISR 106 (Townsend

North Lounge)

Capacity: 30

### **The Care and Feeding of the Actor's Soul**

Connie De Veer, Illinois State University School of Theatre and Dance

Learn exercises to manage stress and move toward your goals with exercises from the book-in-progress, 'The Care and Feeding of the Actor's Soul'. These skills will help you in all walks of your life! Come dressed to move, and bring some paper and a pen.

**3:00 pm–4:10 pm**

**4:30 pm–5:40 pm**

KCPA Dance Rehearsal Rm

### **Intercultural Shakespeare**

Katherine Norman, University of Illinois at Urbana-Champaign

Bring a Shakespeare piece you're working on, or one will be provided, and we will approach it from various intercultural angles. Beginning with the physical strength of Kalari- the oldest martial arts form in the world, the vocal flexibility of Kabuki techniques, and a brief engagement with the rhythm of the meter through a Grotowski inspired physical training culminating in an easy released speaking of the text to observe how these various practices can inform our work. You will be up, moving, and exploring for the entire session.



## **A Friday, continued**

**3:00 pm–4:10 pm**

**4:30 pm–5:40 pm**

KCPA Studio Theatre

Capacity: 64

### **Weaponed Stage Combat: Safety's the Thing**

Tim Frawley, Forte Stage Combat, Inc.

In this workshop, the safe and dramatically interesting choreography of a staged sword fight will be demonstrated. Particular attention will be placed on the methods and significance of actor training and the safety of the weapons themselves. We'll also look at the safety of "found" weapons.

**3:00 pm–4:10 pm**

**4:30 pm–5:40 pm**

Music Building 1148

Capacity: 25

(+100 observers)

### **Putting Your Singing Audition Together**

William Rush, William Rush Voice Consultants

What does an actor need to know going into a singing audition? Participants in this workshop will learn how to select and prepare their audition song, as well as getting some practical do's and don'ts to increase their chances for success. Participants are urged to bring songs for coaching.

**3:00 pm–4:10 pm**

**4:30 pm–5:40 pm**

Music Building 1180

Capacity: 30

### **Hearts on Fire: Chakra Meditation for the Actor**

Britnee Ruscitti, Rolling Meadows High School

As actors, we connect with the heart of another character. As we step off the stage, it's hard to let go of what's in our own heart. Connecting with the heart chakra is a way for actors to feel confident as they get in touch with their own fire.

**3:00 pm–4:10 pm**

**4:30 pm–5:40 pm**

Lincoln Hall 1027

Capacity: 40

### **Semi-improvised Comedy in the Italian Style: Commedia dell'Arte**

Mikel Matthews, Rantoul Township High School

Use Commedia stock characters to create scenes and learn how to use Commedia at your school. This art form makes improvisation easy, even for non-improvisors.

**3:00 pm–4:10 pm**

**4:30 pm–5:40 pm**

Nevada Studio A

Capacity: 20

### **Old School Clowning Around: An Exploration of Classic Clowning**

Stacy Joyce, Aurora University

Come on down and clown around—literally. We will explore the basics of some classic clown characters (White Clown, August Clown, etc.) and improvise around some classic clown scenarios with no makeup or costumes, just good old-fashioned physical comedy.

## **A Acting | Saturday**

**10:00 am–11:10 am**

**11:30 am–12:40 pm**

Illini Union A

### **Take Your Improv to the Next Level**

Improv Mafia, Illinois State University

Improv Mafia, an award-winning collegiate improv troupe, will take workshop attendees through warm-ups, games, and methods they use to create ensemble and exciting scenes. Come experience the excitement that is IMPROV MAFIA!

**10:00 am–12:30 pm**

Illini Union C

Capacity: 20

(+10 observers)

### **Speak the FOCUSED Speech I Pray You!**

Kearstyn Keller, Jaelyn Hawkins, and Alexi Langlois, Northern Illinois University

If an actor cannot be heard and understood, nothing she is saying or doing matters. It's not enough to just "be loud," the sound needs to be focused and intentional. This workshop helps to teach the skills necessary for vocal support and articulation while keeping the actors imagination active and engaged.



## **A** Saturday, continued

10:00 am–11:10 am  
11:30 am–12:40 pm  
Illini Union Ballroom

### **Speaking Shakespeare: Demystifying the Language of the Bard**

Jim Yost, Loyola Academy

The language of William Shakespeare will be explored in this workshop designed to help the young actor get their head, mind, and mouth around the Bard's plays! Using monologues from several of Shakespeare's comedies and tragedies students will explore iambic pentameter and search for hidden clues about emotional context. Pace, emphasis, rhythm, and intention will all be explored.

10:00 am–11:10 am  
11:30 am–12:40 pm  
ISR Multipurpose 29 B&C  
Capacity: 15

### **Be Your Best in 90 Seconds or Less: Choosing and Performing your Best Audition Material**

Anne Thibault, Eastern Illinois University

What's the best way to research and choose audition material? What exactly are directors looking for, and how can you stand out from the crowd? Participants should bring a 60-90 second memorized monologue.

10:00 am–11:10 am  
11:30 am–12:40 pm  
ISR 107 (Townsend  
Central Lounge)  
Capacity: 14

### **Adding Fuel to the Fire: Giving Voice to Juicy Language**

Susan Gosdick, University of Illinois at Urbana-Champaign

This workshop seeks to open the performer's capability to experience, relish, and vocally express text that is larger than life and juicier than everyday speech.

10:00 am–11:10 am  
11:30 am–12:40 pm  
KCPA Studio 1  
Capacity: 10  
(+28 observers)

### **Monologues: A Masterclass on How to Do Them**

Robert Picklesimer, Creative Dramatics Workshop, and  
Lucinda Lawrence, University of Illinois at Urbana-Champaign

What are the difficulties of performing a monologue? Learn how to overcome those difficulties, the use of transitions, pronouns, physicality, offstage cues, onstage cues, as a basis for understanding all of acting. Samples are taken from sources as disparate as Mark Twain, Anton Chekhov, William Faulkner, and William Shakespeare.

10:00 am–11:10 am  
11:30 am–12:40 pm  
KCPA Studio Theatre  
Capacity: 30

### **Acting Your Audition Song**

Stacy Panitch and Dr. Mark Plummer, Aurora University

You've got 16 bars to show them what you've got! Learn how to use multiple interactive acting, vocal, and improvisation techniques to get your audition song to the next level. This workshop requires courageous involvement of all participants! Bring your sheet music.

10:00 am–11:10 am  
11:30 am–12:40 pm  
Lincoln Hall 1065

### **How-To's for Hollywood Auditions**

Stephanie Wilson, New York Film Academy

As an aspiring actor in film and TV, you will be asked to walk into an audition room and "cold read" from a script. Or, you may receive the "sides" to a project just a few hours before your audition. How do you get a sense of your character in such a short time? How do you create a backstory and a world for your character to live in if you only know a few lines of the dialogue? Learn how to make strong choices, listen carefully, and fill out your part as honestly as possible in this Cold Reading for Film and TV workshop.

10:00 am–11:10 am  
11:30 am–12:40 pm  
Music Building 1172  
Capacity: 14  
(+6 observers)

### **On-Camera Acting and Auditioning**

Adria Dawn and David Tarleton, Tarleton/Dawn Productions

This on-camera workshop will cover important elements for a successful on-camera audition. Topics will include slating, how to talk with casting directors, scale of work, eyelines, as well as on-camera acting tips to ensure an awesome audition. Students will work on current sides from tv/film projects.





**A Saturday, continued**

**10:00 am–11:10 am**  
**11:30 am–12:40 pm**  
 Music Building 1180  
 Capacity: 30

**Monologue Intensive**

Timuchin Aker and Cassandra Cushman, University of Illinois at Urbana-Champaign  
 This workshop is to challenge students to be more impulsive, active, and engaged in their monologues. Current graduate and undergraduate students in the Acting Department of the University of Illinois at Urbana-Champaign will be coaching students' monologues to make them ready for a variety of auditions. Please bring either a Shakespeare/classical or contemporary (1930s-present) monologue (maximum 1 minute 45 seconds) to be performed.

**1:00 pm–2:10 pm**  
**2:30 pm–3:40 pm**  
 Illini Union Ballroom  
 Capacity: 30  
 (+30 observers)

**Designers and Actors (Make) Play Together**

Jason Martin and Kristy Leigh Hall, University of Illinois at Chicago  
 Putting on a costume can completely change a performance. From alignment, to breath, to movement and gesture, the collaboration between designer and actor is critical for all elements of a successful show. Through the use of historical attire, we will demonstrate how a designer is essential to an actor's character development in three short scenes from different periods. Likewise, the actor's embodiment is critical to the artistic choices of the design. We will encourage mutual communication for inspiration.

**1:00 pm–3:30 pm**  
 Illini Union 314A  
 Capacity: 25  
 (+5 observers)

**College Audition Monologue Masterclass**

Zach Moyer, Zach Moyer Casting  
 A good monologue fits an actor like a favorite pair of jeans. This intensive masterclass will give you feedback from a professional casting director and demystify both the casting process and the acting/musical theatre admission process. Don't have a monologue? No problem! The best way to learn is to watch. Ideal for high school seniors and juniors.

**1:00 pm–2:10 pm**  
**2:30 pm–3:40 pm**  
 ISR Multipurpose 29 B&C  
 Capacity: 16

**Simply Stanislavski: Objectives in Action**

Anne Thibault, Eastern Illinois University  
 This workshop will break down one of Stanislavski's most important theories and introduce participants to a 10-point checklist to determine whether they are playing the strongest possible objective.

**1:00 pm–2:10 pm**  
**2:30 pm–3:40 pm**  
 KCPA Studio 2AB  
 Capacity: 30

**Secrets of the Working Actor**

Mark Jeter, The New York Conservatory for Dramatic Arts  
 This workshop is designed to give practical advice and coaching to students on how to advance their career by taking steps today. The secrets for the working actor help remove the daunting prospect of entering an ever changing industry on the ground floor. This workshop will address both larger industry issues, as well as focused craft work. This workshop also explores common sense realities which are too often missed.

**1:00 pm–2:10 pm**  
**2:30 pm–3:40 pm**  
 Music Building 1148  
 Capacity: 10

**Healthy Singing Habits for Musical Theatre Performers**

Cody Walker, Department of Theatre, Southern Illinois University Carbondale  
 Singers, this workshop is for you! Come and learn proper vocal technique and be individually diagnosed on what your bad habits are and how to fix them! Become an independent singer, knowing how to warm yourself up properly to perform with better vocal technique!

**1:00 pm–2:10 pm**  
**2:30 pm–3:40 pm**  
 Music Building 1180  
 Capacity: 20

**No Scripts, No Sets, No Problem! The Essential Elements of Improv**

Sara Phillips, Plano High School  
 In this workshop, we will learn the basics of Improvisation for an Audience—how to develop characters, situations, and plot lines, as well as how to develop a cohesive Improv Show as a whole! Come learn how to SAY YES!



## **C** Costuming/Makeup | Friday

**9:00 am–11:30 am**

KCPA Choral Rehearsal Rm  
Capacity: 30  
(+70 observers)

### **Theatre Makeup: Drag**

Nicholas Spindler and Rebecca Johnson, Illinois State University  
Learn the fundamental techniques of drag makeup through this workshop established exclusively for beginners! Participants receive information, materials, and hands-on assistance in opening the “library,” serving “fish,” and throwing “shade”... on the eyelids. These skills are imperative to artists in the professional world. Participation is limited; however, all observers are welcome.

**12:00 pm–2:30 pm**

KCPA Choral Rehearsal Rm

### **Face On/Face Off!**

Anthony Kosar, Kosar Effects Studios  
Back from last year! Champion of the Face-Off Competition on the SyFy Channel, Anthony Kosar is the real deal when it comes to fantasy makeup and costumes. Come see Anthony transform a student into alien creatures before your very eyes using his own sculpted prosthetics and incredible makeup skills. Spectacular and inspiring!

**3:00 pm–4:10 pm**

**4:30 pm–5:40 pm**

Illini Union 314A  
Capacity: 15

### **Quick-Change Pit Crew**

Kate Murphy, Maine West High School  
Professional costume designer Kate Murphy will introduce students to the essential elements of backstage quick-changes. Following a brief demonstration, teams of students will compete for the fastest time as they choreograph their own quick-changes using sets of identically rigged garments.

**3:00 pm–5:30 pm**

KCPA Studio Theatre  
Dressing Room  
Capacity: 24  
(+30 observers)

### **Creating Injuries with Makeup and Other Tips and Tricks of the Trade!**

Patricia Cheney, Oak Park and River Forest High School  
Various techniques for special effect make up will be demonstrated in this hands-on workshop. Participants will try various techniques for bruises, scars, cuts, open wounds, zombies, other characters, and more!

## **C** Costuming/Makeup | Saturday

**10:00 am–12:30 pm**

KCPA Choral Rehearsal Rm  
Capacity: 40  
(+25 observers)

### **The Walking Dead Makeup Course**

Michael-Colin Reed, Darkhouse Entertainment  
One of the most popular courses of the entire Festival returns for the 6th year in a row to show you how to create an authentic zombie with only a few basic makeup tools and adding in some surprising things that you already have lying around the house! Bring your best bloody and distressed zombie wear to pair with your makeover and let the ZOMBIE APOCALYPSE begin!

**10:00 am–11:10 am**

**11:30 am–12:40 pm**

Music Building 1147  
Capacity: 25  
(+25 observers)

### **Red Hot Designs on a Dime**

Janet Hart and Gareth York, Southeastern Illinois College  
Have you ever been overwhelmed by the thought of costuming a show? In this session we will discuss ways in which you can redesign items, be creative, stay on budget, and have beautiful costumes on stage. Come explore the world of costuming.

**1:00 pm–2:10 pm**

**2:30 pm–3:40 pm**

Music Building 1147  
Capacity: 20  
(+20 observers)

### **Pepakura or Papercrafting for Stage and Cosplay: Crafts, Costumes, and Props**

Mark Spain, Illinois State University  
Participants in this workshop will use Papercraft to create helmets, hats, masks, props, and weapons. Step by step methods to create stage or Con-ready pieces will be demonstrated.



## **C** Saturday, continued

1:00 pm–2:10 pm

2:30 pm–3:40 pm

Illini Union Ballroom

Capacity: 30

(+30 observers)

### **Designers and Actors (Make) Play Together**

Jason Martin and Kristy Leigh Hall, University of Illinois at Chicago

Putting on a costume can completely change a performance. From alignment, to breath, to movement and gesture, the collaboration between designer and actor is critical for all elements of a successful show. Through the use of historical attire, we will demonstrate how a designer is essential to an actor's character development in three short scenes from different periods. Likewise, the actor's embodiment is critical to the artistic choices of the design. We will encourage mutual communication for inspiration.

## **D** Directing/Stage Management | Friday

9:00 am–10:10 am

10:30 am–11:40 am

Illini Union B

Capacity: 50

(+25 observers)

### **Theatre Teachers Action Figures Game**

Michael Daehn, Ball State University

So you wanna know what it's like to be your theatre teacher? You really, really want to know? Then come play this realistic, outrageous, oversized, interactive board game chronicling the everyday worlds of your finest High School theatre educators. There's never been anything like this workshop when it comes to finding out what this profession is really like!

12:00 pm–1:10 pm

1:30 pm–2:40 pm

Illini Union 407

### **Directing with Steve Scott: A Masterclass**

Steve Scott, The Goodman Theatre

If you are an aspiring actor or director, find your way to the Illini Union to learn from one of Chicago's best. In this Masterclass workshop, Steve Scott will work with you on how to inspire and cultivate the best performances through planning, exercises, and practical advice for the stage.

12:00 pm–1:10 pm

1:30 pm–2:40 pm

Lincoln Hall 1027

### **Professional Directing—Collaboration and Flexibility are your BEST FRIENDS**

Christopher Weise

Directing is REALLY hard especially when working for little/no money in Chicago. This workshop details the process of directing professional plays and musicals in the storefront theatre scene focusing on the importance of collaboration, delegating tasks, and artistic flexibility. These skills will take your future shows from "meh" to awesome.

3:00 pm–4:10 pm

Lincoln Hall 1060

### **Stage Manager's Tool Kit**

Terry Ciofalo, University of Illinois at Urbana-Champaign

Stage managing is hard work! Come learn effective methods to employ as a stage manager by putting together a stage manager's tool kit!

## **D** Directing/Stage Management | Saturday

10:00 am–11:10 am

11:30 am–12:40 pm

Illini Union B

### **Directing in 21st Century: the Power of the iPad**

Christina Ordonez, Hoffman Estates High School

Take a look at how we used iPads in our production of *Almost, Maine* to make major improvements to our rehearsal process and show. This workshop is appropriate for any directors or students, as the forum we used, Schoology, is free and compatible with all platforms. Welcome to the 21st Century and take a way a new level of directing!



## **D** Saturday, continued

10:00 am–11:10 am  
11:30 am–12:40 pm  
Music Building 1201  
Capacity: 30

### **Direct Your Own Scene**

Kennedy Musich, Illinois State University

We will begin with an introduction to writing scenes. Students will each write a short scene and then will be divided into groups. In these groups, students will act in the scenes their group wrote and direct their own scene. We will share the scenes in front of the whole workshop to end the class.

## **I** Instructors/Teachers | Friday

9:00 am–11:30 am  
ISR 106 (Townsend  
North Lounge)  
Capacity: 30

### **The Care and Feeding of the Actor's (and the Teacher's) Soul**

Connie De Veer, Illinois State University School of Theatre and Dance

Learn exercises to help you and your students manage stress and move toward your goals with exercises from the book-in-progress, 'The Care and Feeding of the Actor's Soul'. These skills will help you in all walks of your life! Come dressed to move. Bring some paper and a pen.

9:00 am–10:10 am  
10:30 am–11:40 am  
Music Building 1140  
Capacity: 15

### **Partnerships with High School Theatre Programs**

Abra Chusid, Lakes Community High School

How can partnerships strengthen high school theatre departments? What partnerships have you created in your community? In this dialogue, teachers will learn about partnerships across curricular areas, with public libraries, professional theatres, artists, universities, and more. Participants will also be encouraged to share about their own realized and potential partnerships.

9:00 am–10:10 am  
10:30 am–11:40 am  
Music Building 1144  
Capacity: 30  
(+20 observers)

### **Theatre History: The Modified Orgy**

Nina Lynn, Hilerre Kirsch, and Anne James-Noonan, New Trier High School

This is a hands on theatre history workshop for students and teachers interested in creating a fun and comprehensive approach to learning how different cultures built on or moved away from the theatrical styles that came before. Come steal our curriculum!

12:00 pm–1:10 pm  
1:30 pm–2:40 pm  
Lincoln Hall 1065  
Capacity: 15

### **Superhero on Call!: Great Stage Managers Make Great Productions**

Terry Ciofalo and Cynthia Kocher, University of Illinois at Urbana-Champaign

Theatre teachers, directors, choreographers and music directors will all benefit from this workshop that explores the role of the student stage manager. Professional stage managers from the University of Illinois at Urbana-Champaign will teach you how to identify potential stage managers, how to coach them through the production process, and how to set up a legacy of effective stage management at your school. Participants will receive a "stage manager tool kit"—an arsenal of templates you can put to use right away on your current production.

12:00 pm–1:10 pm  
1:30 pm–2:40 pm  
Music Building 1172  
Capacity: 20

### **Theatre Camp for Kids—An Amazing Fundraiser!**

Mary Beth Mezo and Drama Club Officers, Mt. Vernon Township High School

Do you want to earn money for your organization, build your program and provide your high school students with an invaluable experience? If so, this workshop is for you! This session will provide you with all the information needed to conduct a successful theatre camp for kids in your area!



## **I Friday, continued**

**3:00 pm–4:10 pm**

**4:30 pm–5:40 pm**

Music Building 1140

Capacity: 30

### **College Counseling Advice for the future Performing Arts Major**

Jennifer Wygant, Byron High School

This workshop will discuss resources and advice for selecting and applying to college programs in the performing arts, including a discussion on whether or not majoring in a performance based field is right for you. This workshop will be presented by a M.Ed. School Counselor who is also a theatre director and former music major in college.

**3:00 pm–4:10 pm**

**4:30 pm–5:40 pm**

Music Building 1144

Capacity: 50

### **Feeding Your Students' Hungers: What Kind of Bread Will YOU Be?**

Dominic Garramone and Saint Bede Stage Rats, Saint Bede Academy

If you need help re-igniting your passion for teaching theatre, this workshop is for you! Find out if you're rye bread, pumpernickel, or cinnamon swirl, and why every drama teacher is banana nut bread. Let Fr. Dom inspire you for second semester and beyond. (Teachers of all faiths or no faith are all welcome to attend). Homemade breads and spreads will be served, free of charge—just bring your own beverage!

**4:30 pm–5:30 pm**

KCPA CAD Lab

### **Graduate Class: Theatre as an Interscholastic Activity (THD 493.01)**

Required for students who preregistered for the course by December 15, 2014. This is a course meeting to check requirements, deadlines and expectations for THD 493.01.

## **I Instructors/Teachers | Saturday**

**10:00 am–11:10 am**

**11:30 am–12:40 pm**

ISR 106 (Townsend North Lounge)

Capacity: 30

(+30 observers)

### **Motivating Performers to Achieve Excellence**

Holly Rocke, Eureka College

Using the work of FM Alexander, we will focus on techniques to enhance performances! We will use common activities to promote understanding of how you work as an educator/director. We will also explore your approach as an actor in understanding the process of attacking a text.

**10:00 am–11:10 am**

**11:30 am–12:40 pm**

Music Building 1140

Capacity: 20

(+5 observers)

### **Straight Talk about Preparing Your Students for College**

Janet Wilson, Illinois State University

In this workshop, teachers will learn tips for appropriate monologue selection, tools for coaching them, and an approach to using nervous energy to create a stronger performance. Learn what your students should look for when selecting the right college/university for them.

## **M Movement/Dance | Friday**

**9:00 am–11:30 am**

Nevada PKS

Capacity: 12

(+10 observers)

### **The Body as a Text: Introduction to Physical Theatre & Mask Work**

Brian Fruits, Maine West High School

Oftentimes, we, as young artists, forget that storytelling can be powerfully conveyed by using more than just the script. This workshop will involve hand-on contributions from its participants as we take a brief look at neutral, larval, and characters masks while examining space and movement.

**9:00 am–10:10 am**

**10:30 am–11:40 am**

Nevada Studio A

Capacity: 30

### **Musical Theatre Dance**

Rebecca Ferrell, Department of Dance, University of Illinois at Urbana-Champaign  
Box steps, grapevines, and jazz hands! Strengthen the moves that make Broadway great while rocking out to hits from Fosse, *Hairspray*, and MORE! Students are recommended to wear clothing they can move in. Jazz shoes are preferred.



## **M** Friday, continued

**9:00 am–11:30 am**

Nevada Studio B

Capacity: 30

### **Ballroom Dance Master Class**

Stephanie Svarz, University of Illinois at Urbana-Champaign

The intensive bootcamp in Ballroom dance will have you ready to compete on *Dancing with the Stars* or *So You Think You Can Dance?* in no time! Increase trust and chemistry on stage as you learn steps in East Coast Swing, Waltz, and Cha Cha and develop performance ready combinations. No experience needed!

**9:00 am–10:10 am**

**10:30 am–11:40 am**

Illini Union Ballroom

Capacity: 30

(+20 observers)

### **Stick It! An Acting/Movement/Music Exercise**

Robert G. Anderson, University of Illinois at Urbana-Champaign

Using contemporary music and movement, actors and teachers can explore the fundamentals of acting and expand their awareness, freedom, and connectivity.

**9:00 am–10:10 am**

**10:30 am–11:40 am**

KCPA Studio Theatre

### **INVERTable**

On the FLY Productions LLC

This floor-based class teaches you how to balance upside-down in headstands, forearm-stands, handstands and other arm balances inspired by acrobatics and break-dancing. Class begins with core conditioning and alignment exercises that prepare all levels of students for the art of hand balancing.

**12:00 pm–1:10 pm**

**1:30 pm–2:40 pm**

KCPA Dance Rehearsal Rm

### **Luigi Jazz-Dance Technique for Musical Theatre**

Tanya Picard, Impulse Dance Company

Luigi technique teaches the actor/dancer how to warm up without injury and how to effectively project character through movement. Luigi, sometimes called “the teacher to the stars,” has taught and influenced artists such as Liza Minnelli, Robert Morse, Bette Midler, John Travolta, and 5-time Tony winner Susan Stroman. Participants will be introduced to Luigi’s famous warm-up as well as a centre combination showcasing Luigi’s distinctive Broadway style. Wear comfortable clothing and come prepared to move. Bring jazz shoes if you have them.

**12:00 pm–1:10 pm**

KCPA Studio Theatre

### **Free Spirited Improv**

On the FLY Productions LLC

This class uses different and partially unusual techniques to teach dancers and performers several important aspects of a performance. Participating in fun awkward exercises as well as creative partnering routines brings the dancers closer to themselves as well as each other. They learn to completely let go physically and mentally to give a full visual performance and how to take directions quickly from a choreographer.

**12:00 pm–2:30 pm**

Nevada PKS

Capacity: 25

(+15 observers)

### **Yoga and Movement for the Actor: Embodying Characters More Deeply**

Brenna Cronin, Teaching Artist

In this workshop, participants will spend time focusing on intentional breathing and movement. Through short meditations and postures, we will discover how our bodies are living instruments to embody the characters we play. Please bring a journal and a pen for reflecting. Observers are welcome and encouraged to learn a new skill to bring back to their communities.

**12:00 pm–1:10 pm**

**1:30 pm–2:40 pm**

Nevada Studio A

Capacity: 30

### **Contemporary Modern Dance**

Rebecca Ferrell, Department of Dance, University of Illinois at Urbana-Champaign

This class concentrates on body awareness, exploring different levels, and moving through space. Clothing that is easy to move in and bare feet are required.





## **M** Friday, continued

**12:00 pm–1:10 pm**

**1:30 pm–2:40 pm**

Nevada Studio B

Capacity: 35

(+10 observers)

### **From Hopeless to Hoofer in 60 Minutes!**

Michael-Colin Reed, Darkhouse Entertainment

Love musicals? Who doesn't? Don't like to audition for them because you think you can't dance? This crash course taught by choreographer Michael-Colin Reed won't literally turn you into a "hoofer." However, you WILL learn how to perform the most commonly used steps that choreographers will throw at you to separate the "can't dance" from the "moves well" candidates and GET YOU THAT CALLBACK.

**3:00 pm–4:10 pm**

**4:30 pm–5:40 pm**

KCPA Drama Rehearsal Rm

Capacity: 30

### **TAP**

Rebecca Ferrell, Department of Dance, University of Illinois at Urbana-Champaign

Grab your shoes because we're about to groove to the beat with our feet! Students are encouraged to wear clothing they can move in. Tap shoes are required.

**3:00 pm–4:10 pm**

**4:30 pm–5:40 pm**

Nevada PKS

Capacity: 30

### **Contact Improvisation**

Stephanie Svarz, University of Illinois at Urbana-Champaign

Explore the remarkable universe of contact improvisation while learning how to improvise movement in space with your fellows. Contact Improvisation is a remarkable tool that can increase the performer's awareness of movement, improve mental and physical flexibility, and open your hearts to create authentic performances. Join us in movement clothes (no jeans, skirts/dresses, please).

**3:00 pm–4:10 pm**

**4:30 pm–5:40 pm**

Nevada Studio B

Capacity: 50

### **The Best of *Spamalot* in 70 Minutes**

Eryn Brown, Libertyville High School

Based on Monty Python's surreal humor, this musical juxtaposes one wacky production number after the next. From Finland to Vegas, umpteen unlikely movement styles are featured. Challenge your versatility by sampling the best of *Spamalot*. If you've found your grail and it's musical theatre, don't miss this fun-filled dance workshop!

## **M** Movement/Dance | Saturday

**10:00 am–11:10 am**

**11:30 am–12:40 pm**

KCPA Dance Rehearsal Rm

Capacity: 50

### **Fosse Fever: A Look into Bob Fosse's Groundbreaking Number "Steam Heat"**

Alyssa Mayfield, Regina Dominican High School

Have you ever wanted to learn the sleek, sexy style of legendary Broadway and film director/choreographer Bob Fosse? If so, then you will love this workshop! Learn Fosse's groundbreaking number "Steam Heat" from *The Pajama Game* (1954), which made stage musical history by introducing his signature style. Spend 70 minutes learning the choreography in a fun and professional atmosphere, experience how Broadway dancers learn choreography, and by the end of the workshop...YOU are the show!

**10:00 am–11:10 am**

**11:30 am–12:40 pm**

KCPA Studio 2AB

Capacity: 20

### **Stylized Movement for Non-Dancers: Chair Duets**

Neil Scharnick, Carthage College

The groundbreaking British theatre company Frantic Assembly has developed powerful and effective ways to generate stylized movement/choreography with non-dancers in their casts. This workshop will introduce one of their most successful and influential exercises, chair duets.

**10:00 am–11:10 am**

**11:30 am–12:40 pm**

Nevada PKS

Capacity: 30

(+20 observers)

### **Yoga and Pilates for the Theatre Life**

Jenna Weglarz-Ward, University of Illinois at Urbana-Champaign

Stressed out during tech week? Always wanting to strengthen your core to help you breathe, sing, and dance? Need to work out those knots after rehearsal? This master class will use yoga and Pilates techniques to develop strength, flexibility, and balance not only of your body but your mind.



## **M** Saturday, continued

10:00 am–11:10 am  
11:30 am–12:40 pm  
Nevada Studio A  
Capacity: 25

### **Supercalifragilisticexpialidocious!**

Sarah Mohr, Champaign Central High School Drama

Wow your friends with your ability to spell Supercalifragilisticexpialidocious and do the dance from the Broadway production of *Mary Poppins*. Come see if you have what it takes to keep up!

10:00 am–11:10 am  
11:30 am–12:40 pm  
Nevada Studio B  
Capacity: 30  
(+30 observers)

### **Russian Movement Madness!**

Auriel Jones and Lauren Markey, Northern Illinois University

Have you ever wanted to be a circus acrobat? Russian movement, taught at Stanislavsky's Moscow Art Theatre School, is a rigorous mixture of balance and acrobatics. It reveals the joy and art in movement, teaching actors to use their full body. Learn to smile while standing on your head!

1:00 pm–2:10 pm  
2:30 pm–3:40 pm  
Nevada Studio A  
Capacity: 30

### **All That Jazz!**

Rebecca Ferrell, Department of Dance, University of Illinois at Urbana-Champaign

From classical Broadway style to contemporary jazz, this class captures the energy and technique of Jazz Dance. Students are recommended to wear clothing they can move in. Jazz shoes are preferred.

## **P** Playwriting | Friday

12:00 pm–1:10 pm  
1:30 pm–2:40 pm  
ISR 107 (Townsend  
Central Lounge)  
Capacity: 50

### **Sketch Comedy 101**

Patrick Deane, Lockport Township High School

If you're ever curious how a Sketch Comedy show is put together and how it can be done, then this is the workshop for you. From writing to performing, we can show you how we've done it.

12:00 pm–1:10 pm  
1:30 pm–2:40 pm  
ISR 106 (Townsend  
North Lounge)  
Capacity: 30

### **Create a Play Contest**

Quinn McGavin and Christina Harrington, Illinois State University

In a fun, contest setting, participants will combine multiple elements of theatre to create a plan for a new, unique play based on a short prompt. Participants will work in a group to create exposition, plot, set design, costume design, characters, and more! Everyone is urged to come.

3:00 pm–4:10 pm  
4:30 pm–5:40 pm  
Music Building 1147  
Capacity: 24

### **Write a Play For Us!**

Marty Lynch and Holly Rocke, Eureka College

Want to be a part of the Illinois High School Ten Minute Play Festival? We will walk you through the basic steps of what we look for when reading scripts from high school students. Bring a pen and paper and we will get started today! Check out <http://eureka-college.com/arts/ten-minute-play-festival> for more information.

## **P** Playwriting | Saturday

10:00 am–11:10 am  
11:30 am–12:40 pm  
Illini Union 314A  
Capacity: 20

### **The Writing of *Foot in the Door*: Learn How to Write Your Own Mystery Play**

Michele M. Brackett-Bonzi, Rockford Lutheran High School

This workshop will teach and explore the process of writing your own mystery play with direct examples relating to the show *Foot in the Door* (written by Michele M. Brackett-Bonzi).



## **P** Saturday, continued

|   |   |
|---|---|
| 10:00 am–11:10 am<br>11:30 am–12:40 pm<br>Music Building 1144<br>Capacity: 30 | <b>Playwriting Dynamic and Complex Characters</b><br>Robert AuFrance, Waldorf College Theatre Department<br>This workshop will teach students how to write and create characters that will live and breathe from the pages of their scripts. Participants should bring paper and writing utensils as this will be an active working and creative environment. |
| 1:00 pm–2:10 pm<br>2:30 pm–3:40 pm<br>Music Building 1201<br>Capacity: 30     | <b>Make People Laugh (For the Right Reasons): A Crash Course in Comedy Writing</b><br>Marina Mularz, Northwestern University<br>In this session, we will explore the rules of page-worthy and stage-worthy humor by focusing on comedic characterization, situation, and dialogue. This workshop will also include an interactive writing assignment.         |

## **S** Singing/Musical Theatre | Friday

|  |   |
|--|---|
| 9:00 am–10:10 am<br>10:30 am–11:40 am<br>Music Building 1201 | <b>Acting the Song</b><br>Elizabeth Lanza, Glenbard North High School<br>Learn some tricks and tools to connect and stay truthful and connected through your song. Apply them to your auditions and musical theatre scene work, as well. Bring your music and have the opportunity to work on it in the session.  |
| 1:30 pm–2:40 pm<br>KCPA Studio Theatre                       | <b>Find Your Voice!</b><br>Julie Ann Robinson, Glenbrook South High School<br>Musical Theatre: the two best words in the English language! If you agree with this statement then join us for this high energy musical theatre workshop! Come with an open heart and a willing spirit—and we'll do the rest to get you singing and moving at your best!            |
| 3:00 pm–4:10 pm<br>4:30 pm–5:40 pm<br>Music Building 1201    | <b>R&amp;R with Your R&amp;R</b><br>Kitty Karn, Western Illinois University<br>This workshop explores ways to achieve the maximum amount of power in ROCK & ROLL singing (and other contemporary styles) with the least amount of effort (REST & RELAXATION). Brush up on your slides, fall-offs, and growls, or learn what those mean and how to do them safely! |

## **S** Singing/Musical Theatre | Saturday

|   |  |
|---|--|
| 10:00 am–11:10 am<br>11:30 am–12:40 pm<br>Music Building 2100 (Aud.)                        | <b>Sing Your Character's Song</b><br>Stacy Cunningham, Leyden High School<br>Participants in this workshop will learn songs from the Broadway Musical Theatre genre. The importance of character development within the chorus will be addressed with acting and vocal techniques.   |
| 1:00 pm–2:10 pm<br>2:30 pm–3:40 pm<br>Music Building 1144<br>Capacity: 6<br>(+50 observers) | <b>Energizing Your Voice</b><br>Marc Schapman, Southern Illinois University Edwardsville<br>Come and discover your voice in musical theatre song! This workshop will focus on technical and interpretative approaches to selecting and learning repertoire in musical theatre. Participants will be coached on repertoire and take a few steps closer to an audition ready song. Bring sheet music if interested in participating! |



## **T** Technical Theatre | Friday

**9:00 am–10:10 am**  
**10:30–11:40 am**  
Illini Union 314A

### **Create Your Own Original Musical**

Azizi Marshall, Trinity High School

Want to write your own musical, but don't know where to start? Come and hear how a group of students took their ideas and created a smash-hit musical that was covered by the *Sun Times* and local media. Learn the step-by-step process, and how you can implement this program into your own school. Participants will get a chance to create their own musical within the workshop, and be able to ask the original group of students questions on the exciting process of creating an original, student-written musical. Azizi Marshall's TPI Model projects will be explored.

**9:00 am–11:30 am**  
KCPA AV Room  
Capacity: 30

### **Getting the Best Show With the Equipment You Already Have**

Marcel Graham, Lake Zurich High School

This workshop is a must for all technicians. From the author of my college term paper "Why does my sound suck?" comes the latest in workshops about getting the best out of what you already have. We give you practical solutions without telling you to buy thousands of dollars of 'stuff'.

**9:00 am–2:00 pm**  
KCPA Great Hall Stage  
Capacity: 90  
(+75 observers)

### **USITT Midwest Section Tech Olympics**

David Barone, Glenbard North High School

Gather up your school's techies and test your skills at events for scenery, costumes, lighting, rigging, and more! Whether you're new to crew or know a bowline from a clove hitch, you'll learn more than you knew before and have fun, too! Students may practice before events. Spectators welcome!

**9:00 am–12:00 pm**  
**1:00 pm–5:00 pm**  
KCPA Prop Shop

### **Underground Tech Workshop**

J. Rundell, University of Illinois at Urbana-Champaign

Calling all Techies! Find your way to the tech underground and join us as we build a giant puppet—along with other tech projects throughout the entire Festival. Stop in and visit or stay awhile to help create!

**9:00 am–12:00 pm**  
**1:00 pm–5:00 pm**  
KCPA Scene Shop  
Capacity: 50

### **Rolling Tech Workshops**

Technical Theatre Faculty, University of Illinois at Urbana-Champaign

Stop down in to KCPA's Scene Shop and attend the Rolling Tech workshops run by University of Illinois faculty members and KCPA artisans. These continually running workshops will focus on stagecraft, audio, lights, scenic technology, costumes, and makeup.

**9:00 am–10:10 am**  
**10:30 am–11:40 am**  
KCPA Ensemble B  
Capacity: 20  
(+20 observers)

### **Color Theory for Theatre Designers**

Robert Perry, University of Illinois at Urbana-Champaign

Use colored light to enhance your design. Come experience what gels and LEDs can do to your own set and costume designs. This is a hands on practical workshop where you will be able to see how colored light from multiple sources can be used to benefit your designs.

**12:00 pm–1:10 pm**  
**1:30 pm–2:40 pm**  
KCPA AV Room  
Capacity: 25

### **How Do I Fly THIS?**

Joel Furmanek, KSA Lighting

Flying scenery, props, and equipment have long been a part of theatre. It solves problems and opens new possibilities. It is also the most dangerous work in theatre. This workshop will teach you a practical approach to the most complicated situations, complete with a hands on practicum.



## **T** Friday, continued

**12:00 pm–1:10 pm**  
**1:30 pm–2:40 pm**  
 KCPA Studio 2AB  
 Capacity: 50

### **Creativity in Prop Making For the High School Drama Club**

Christopher Gadowski and Nick Shaw, Eastern Illinois University Theatre Arts Dept.  
 This workshop examines a variety of ways a high school drama club can fill its prop needs through purchasing, borrowing, and building with limited time, funds, and personnel.

**12:00 pm–1:10 pm**  
**1:30 pm–2:40 pm**  
 KCPA Ensemble B  
 Capacity: 20

### **Using Vectorworks Spotlight and Lightwright Data Exchange for Your Light Plots**

Robert Perry, University of Illinois at Urbana-Champaign  
 This is a hands-on workshop. We will cover draftings standards as they apply to today's electronic age. If you have your own laptop with Vectorworks Spotlight and/or Lightwright installed, please bring it with you.

**3:00 pm–4:10 pm**  
**4:30 pm–5:40 pm**  
 Illini Union Ballroom  
 Capacity: 75  
 (+75 observers)

### **Scenic Design and Tech Tips**

Ken Frykholm, Lockport Township High School  
 How do you design and create the world in which the play lives? We will look at many different types of plays and examine the design elements and tricks to make your drawings a reality on stage.

**3:00 pm–5:30 pm**  
 KCPA AV Room  
 Capacity: 15

### **Pneumatics on Stage**

Joel Furmanek, KSA Lighting  
 Using pneumatics (compressed air) on stage can be a very cost effective and simple way to achieve cool F/X, or automate scenery. In this workshop we will learn the basic components of a system. Then, we will design and build a system.

**3:00 pm–4:10 pm**  
**4:30 pm–5:40 pm**  
 KCPA Choral Rehearsal Rm  
 Capacity: 50

### **Getting Sweet on Candy Glass: How to Break a Bottle Over your Head without Getting Hurt**

Chris Jensen, West Chicago Community High School  
 Learn how to make breakaway bottles and glass window panes out of ingredients from the baking aisle. Class covers how to make candy glass and molds, as well as how to safely break it.

## **T** Technical Theatre | Saturday

**10:00 am–11:10 am**  
**11:30 am–12:40 pm**  
 KCPA AV Room  
 Capacity: 30

### **Projection Design for Live Performance**

John Boesche, University of Illinois at Urbana-Champaign  
 Learn the aesthetics and techniques of projection design for theatre and dance. We will explore basic techniques of crafting digital images and use them to produce striking virtual scenery and special effects on stage. The presentation is centered around the use of affordable software for show control of digital images.

**10:00 am–12:00 pm**  
**1:00 pm–3:30 pm**  
 KCPA Prop Shop

### **Underground Tech Workshop**

J. Rundell, University of Illinois at Urbana-Champaign  
 Calling all Techies! Find your way to the tech underground and join us as we build a giant puppet—along with other tech projects throughout the entire Festival. Stop in and visit or stay awhile to help create!

**10:00 am–12:00 pm**  
**1:00 pm–3:30 pm**  
 KCPA Scene Shop  
 Capacity: 50

### **Rolling Tech Workshops**

Technical Theatre Faculty, University of Illinois at Urbana-Champaign  
 Stop down in to KCPA's Scene Shop and attend the Rolling Tech workshops run by University of Illinois faculty members and KCPA artisans. These continually running workshops will focus on stagecraft, audio, lights, scenic technology, costumes and makeup.





## **T** Saturday, continued

10:00 am–3:00 pm  
KCPA Studio Theatre

This is a  
pre-registered  
workshop.  
Students who have  
not registered in  
advance may  
only observe.

### **Flying FX 101**

Hall Associates Flying Effects

So you think you can fly? Test your flying skills or try your hand at the ropes in this introductory flying workshop! Performers, technicians, and teachers will greatly benefit from this challenging and exciting class specializing in the basics of performer flying. Lead by members of the Hall Associates Flying Effects team, participants will learn basic performer flight and operation techniques using our specialty harnesses and equipment. The workshop will focus on the team work required for a successful flying performance and will conclude with a short showcase piece. Spectators are welcome!

Note: Fly system operators are just as important as the flying performers, so we will ask that participants take turns as operators and performers if needed. It is highly recommended that all participants be in shape and healthy—with good core strength and no bad knees or bad back—and ideally are able to do at least one pull up. Performers should wear comfortable, tight fitting clothes that are easy to move in. Shirts must be crew neck style and have sleeves! Operators should have an athletic build.

10:00 am–11:10 am  
11:30 am–12:40 pm  
Music Building 1148  
Capacity: 30

### **Why Knot?**

Tracy Nunnally, Hall Associates Flying Effects

Knot tying is an important skill for a theatre technician to possess. Knowing the proper knot and how to use it will increase the safety and efficiency in almost every area of theatre technology.

1:00 pm–2:10 pm  
2:30 pm–3:40 pm  
KCPA AV Room  
Capacity: 20

### **The LED Theatrical Solution—As Easy as 1,2,3,4**

Charlie Hulme and Grand Stage Company, Philips Entertainment

Theatrical lighting has changed. Theatrical systems have changed. Are you ready for change? In this workshop, we'll discuss how the transition to LED sources in the theatre requires a new approach to lighting system design and operation.

1:00 pm–2:10 pm  
2:30 pm–3:40 pm  
KCPA Choral Rehearsal Rm

### **What is in Your Portfolio? YOU!**

Richard Arnold, Tammy Honesty, Frank Ludwig, and Mark Lococo, Elmhurst College

A portfolio is necessary in many areas of theatre, including entry into college. A good portfolio is a reflection of you, your work process, and how you think about theatre. However, portfolios are really only a tool to help you talk about yourself. This workshop will help you use your portfolio to your best advantage.

## **V** Variety | Friday

9:00 am–10:10 am  
Illini Union 407  
Capacity: 100

### **Finding Your Passion Panel: Habits of Success**

Brenna Cronin, Teaching Artist

Josh Kimball, Southern Illinois University Carbondale

Jill Meier, Lookingglass Theatre Board of Directors

Join us for a conversation about pursuing your passions in theatre. Listen and ask questions as each presenter shares their story and answers your questions about a life in theatre. These presenters bring a wide array of experience from varying perspectives to discuss finding the creative balance of taking risks and making smart decisions when pursuing a theatre career.



## **V** Friday, continued

**12:00 pm–1:10 pm**

Music Building 1201

Capacity: 100

### **Finding Your Passion Panel: Discovering Vocal Performance**

Aani Bourassa, University of Illinois at Urbana-Champaign

Kitty Karn, Western Illinois University

Join us for a conversation about pursuing your passions in theatre. Listen as each presenter shares their story and answers your questions about a life in theatre.

**12:00 pm–1:10 pm**

Illini Union 407

Capacity: 100

### **Finding Your Passion Panel: Teacher/Technician (Lovebirds)**

Ryan Bundy, Intelligent Lighting Creations, Inc.

Teresa Bundy, St. Charles East High School

Join us for a conversation about pursuing your passions in theatre. Listen as these presenters share their stories of meeting while working on an All-State production, pursuing successful careers in theatre tech and teaching theatre, and the roads they took to get there.

**3:00 pm–4:10 pm**

Illini Union 210

Capacity: 100

### **Finding Your Passion Panel: Write Your Own Success in Theatre & Comedy**

Marina Mularz, Northwestern University

Katherine Norman, University of Illinois at Urbana-Champaign

Hailey Shelton, Northern Illinois University

Join us for a conversation about pursuing your passions in theatre. Listen as these panelists share their passions for writing, improv, and finding alternative ways of using one's theatre degree. Still fresh in the theatre scene, each of these panelists will share their unique experiences as they begin their careers in theatre.

**3:00 pm–4:10 pm**

Illini Union 407

Capacity: 100

### **Finding Your Passion Panel: A Director's Wisdom and Wit**

Steve Scott, The Goodman Theatre

Find out how renowned director Steve Scott rose to become a prominent director, casting director, and teacher in Chicago. Listen to Steve's story and ask questions as he shares the roads he has taken to a successful career in theatre.

## **V** Variety | Saturday

**10:00 am–11:10 am**

Illini Union 314B

Capacity: 100

### **Finding Your Passion Panel: Careers in Chicago Theatre**

Cara Chumbley, Millikin University

Justin Kimball, Second City Conservatory

Zach Moyer, Zach Moyer Casting

Join us for a conversation about pursuing your passions in theatre. Listen as these two actors and casting director discuss their experiences in pursuing a theatre career in the great theatre city of Chicago!

**10:00 am–11:10 am**

Illini Union 210

Capacity: 100

### **Finding Your Passion Panel: Careers in Tech**

Marcel Graham, Lake Zurich High School

Charlotte Rathke, The Marriott Theatre/Niles West High School

Michael Swager, Christie Lites

Join us for a conversation about pursuing your passions in technical theatre. Listen and ask questions as these lighting and sound designers share their stories and answer your questions about finding fulfilling careers in technical theatre.

**10:00 am–11:10 am**

Illini Union 407

Capacity: 100

### **Finding Your Passion Panel: From the Ground Up with Michael Halberstam**

Michael Halberstam, The Writer's Theatre

Join us for a conversation about pursuing your passions in theatre. In this unique opportunity, hear how Michael built The Writer's Theatre from scratch and made it become one of the most successful regional theaters in the Chicago area.



## PROFILES OF SCHOOLS PRESENTING PRODUCTIONS

**Benton Consolidated High School** (*Second Class*) has an enrollment of approximately 600 students, with 30 involved on the speech and drama team. A typical year includes a fall play, made up of students from the drama team, and a spring musical, which is open to all students. There is one drama teacher/director who oversees the speech and drama team. This year, there is also a new musical director. The speech and drama team must be involved with the spring musical in some way.

**Centennial High School** (*Cinderella [Enchanted Edition]*) is located in Champaign, IL. With a student population of 1450, the drama program produces 3 main stage productions a year: the fall play, the fall children's show, and the spring musical. In addition, they coordinate the all-school talent show, SPECTRUM. The curricular Intro to Drama class presents children's plays to the elementary schools and the Advanced Acting class presents a full-length production. The school's program is overseen by one full-time drama teacher.

**Clinton High School** (*Get Your Act Together: An Evening of One-Act Plays*) presents shows on behalf of Thespian Troupe #3151. This extracurricular theatre program performs two shows each school year. The fall show is typically a straight play or series of one-act plays. The spring show alternates between Express Yourself (a variety show including individual talent, group dances, and skits) and a musical. *Once Upon a Mattress* was their musical this past spring. Clinton High School is located in the small town of Clinton, IL. Out of the high school's estimated 600 students, around 40 helped put together this fall's production. Clinton's auditions are always open to the entire school.

**Deerfield High School** (*Air Guitar High*) is a school of approximately 1700 students located in a suburb 20 miles north of Chicago. The theatre program is thriving with more than 15% of the student body enrolled in a variety of classes. The Fine Arts Department offers numerous courses in the curriculum including Introduction to Theatre, Theatre Advisory, Actors Studio, Musical Theatre, Theatre Company, Technical Theatre, Technical Theatre Design, and Advanced Study in Theatre Arts. Nearly 200 students participate in the extracurricular theatre program, with 60 of those serving on the Tech Crew. There are five main stage productions: two fall plays, a variety show, a spring musical and a spring show. The spring show is performed by the Company, Musical Theatre class and designed and built by the Tech courses. One Fine Arts faculty member serves as Theatre Director with one Technical Director. Costumes, Props, Publicity,

and House Management are also a part of the adult staff members.

**Edwardsville High School** (*Celebration*), part of the greater St. Louis area, is highly rated in academics, athletics and fine arts. Over 150 students participate in extracurricular drama. EHS Drama Club and Thespian Troupe #1534 offer two full-length productions, a student-written/directed Christmas show, three one-act productions and numerous short plays and drama workshops for the community. This service-oriented group earned the 2014 award of excellence from the state's Those Who Excel awards program.

Located in Saline County in southeastern Illinois, **Harrisburg High School's** (*Charlotte's Web*) theatre department presents two productions annually. The first occurs in the fall, typically with a play or small musical. Around 20 students participate in the fall production. A large musical is then presented each spring. On average, around 75 students participate in the March show. During the last two school years, the HHS Theatre Department brought to the stage *You're A Good Man, Charlie Brown*, *The Diary of Anne Frank*, *Seussical*, and the school's largest production, *The Wizard of Oz*, which consisted of a cast of 117 students ranging from 5th-12th grade. A large portion of the cast consists of high school band members. In a school with an enrollment of less than 600 students, 70 students participate in the band and color guard. Each show has one director. The high school art and building trades teachers help design the sets. The family and consumer science teacher acts as the costuming director for each show. In the spring semester, an Introduction to Theatre class is offered. Here students learn the basics of theatre and assist with the spring musical.

**Hinsdale South High School** has approximately 1,700 students. 200 students participate in our curricular theatre/speech classes and extracurricular programs. The theatre program at South annually mounts one full-length musical and play, a one-act play, a one-act play festival, group interpretation, and many Improv shows throughout the school year. In addition, Hinsdale South High School offers: Introduction to Theatre, Advanced Acting, Stagecraft, Oral Interpretation and Speech/Communications.

**Hoffman Estates High School** (*Almost, Maine*) is a diverse school in the northwest suburbs of Chicago from District 211. HEHS's community is 50% low income and 63% minority, a demographic that is reflected in the theatre program. The theatre program itself is entirely extracurricular and includes a Comedy Troupe, Variety Show, two plays, a musical, and a Madrigal Troupe. The students and the nine directors and assistant directors



## Profiles of Schools Presenting Productions, continued

work on all the shows, which allows HEHS to create a spiraling educational experience. Students are offered extraordinary opportunities through a variety of shows designed to expose the students to the many facets of technical, musical, dramatic, and comedic theatre.

**The Lake Park High School** (*Radium Girls*) Theatre Program features 7 extracurricular productions each year—a children's play, fall play, 2 winter plays, contest play/group interpretation, and a spring musical. In addition, the 50-member Thespian Troupe #3516 hosts senior directed one-acts and two Improv nights as charity fundraisers. Out of the 2,600 students at Lake Park, about 120 are involved with the extracurricular theatre program. Students can enroll in Drama 1, Drama 2, Drama Production, Drama Practicum, and Stagecraft courses. The program focuses on educational theatre and strives to expose students to a variety of genres, topics and theatrical experiences.

**Mattoon High School** (*One Woman Show*) is a school of 1,100 students where drama/theatre is an extracurricular activity. There are between twenty to sixty students involved in any given production. Each year two to four shows are produced. These include a fall play, spring musical, an audience participation murder mystery dessert theatre, and a traveling children's theatre. There is one drama director for the school and one technical director. Mattoon is a mid-sized Midwestern town with a growing interest in the arts.

**Moline High School** (*James and the Giant Peach*) overlooks the Mississippi River in northwest Illinois. Moline services approximately 2,200 students in the high school; over 50 of which are involved in the entirely extracurricular theater program with only one teacher and a lot of volunteer help. Moline showcases three mainstage shows per year, plus a festival of student-directed One-Act Plays. Some past mainstage show titles include *The Foreigner*, *The Yellow Boat*, and *How to Succeed in Business Without Really Trying*. Many families in the district work for John Deere Co. or the Rock Island Arsenal.

Located 40 miles north of Chicago, **Mundelein High School** (*Trust*) is a comprehensive one-school district that serves 2,300 students. MHS Theatre is a co-curricular program, offering classes in both acting and technical theatre. They produce 4 shows a year - an early fall student-directed one-act play festival, a fall and winter play and a spring musical. Recent plays include *Our Town*, *You Can't Take it With You*, *Romeo & Juliet*, *Radium Girls* and *Almost, Maine*. Musicals include *The Secret Garden*, *The Drowsy Chaperone* and *The Music Man*. There is one full-time theatre teacher, as well as several stipended positions for scene and light design, as well as music and dance direction for the musicals.

**Naperville North High School** (*Much Ado About Nothing*) is a school of 2,950 students in a suburban Chicago community of 144,000 people. The theatre program has approximately 100 students involved onstage and backstage. The school presents six productions a year including a freshman/sophomore play, a fall and spring play, a musical, and two student-directed productions: a children's show and an evening of one-acts. Three theatre classes are offered: Acting, Advanced Acting, and Play Production. Co-curricular clubs include Theatre Club, open to any student interested in any aspect of theatre, which sponsors workshops presented by theatre professionals, trips to see shows, and social activities; a Tech Crew; and Costume Crew. There is also an Improv Club that meets weekly before school to play improv games. There are four teachers involved in the program.

**Nicholas Senn High School—Senn Arts** (Mary Zimmerman's *Metamorphoses*) is a Fine and Performing Arts Magnet Program where creative Chicago students pursue artistic and academic excellence. Senn Arts provides students with an environment that fosters academic, social, and personal growth to cultivate artistic members of the global community.

Located in suburban Skokie, just north of Chicago, **Niles North High School** (*An Almost Perfect Person*) is part of a two-school high school district of approximately 5,000 students. Over ninety languages are spoken among the 2,200 students, representing economic, racial, and ethnic diversity. Three hundred students are active in the Theatre Department's eight-production season, and advanced students are involved with co-curricular productions through their drama courses. Niles North has a four-year Theatre curriculum.

The **Rockford Lutheran School** Theater Program (*Foot in the Door*) consists of approximately 30 individuals and is headed by a technical director and an artistic director. It is an after school program. Although theatre classes are not offered here, students learn the theatre process during the rehearsal process. Rockford Lutheran produces two non-musicals and one musical each year. Their productions are seen by school members as well as members of their community.

**Saint Ignatius College Prep** (*Shrek The Musical*), a Jesuit Catholic school in the heart of Chicago, is a diverse community dedicated to educating young men and women for lives of faith, love, service and leadership. Through outstanding teaching and personal formation, the school challenges its talented student body of nearly 1,500 to intellectual excellence, integrity, and life-long learning and growth. Saint Ignatius College Prep's theatre



## Profiles of Schools Presenting Productions, continued

group, The Harlequins, believe that educational theatre should be a means by which students grow as individuals by examining their sense of self in the world in which they live. This growth is accomplished through exposure to the diverse humanistic themes presented in various genres of dramatic literature via a Fall Musical, Spring Play, Winter One-Acts and a 24 Hour Play series. As they see, think and develop empathy for characters and situations apart from their own unique existence, the nearly 100 Harlequins and 10 faculty mentors are broadening their understanding of the human condition and adding dimension to their perspectives of life. In doing so, the students will hopefully become more open-minded and accepting. Theatre can prepare one for life; it is an avenue to develop understanding and awareness.

**Saint Joseph-Ogden High School** (*Shakespeare 450*) is located in central Illinois, 12 miles east of the University of Illinois. 485 students attend SJO, where one director and two assistants annually produce three productions (fall play, Talent Show, and spring musical). 60 students participate in the program, with most students involved in multiple school activities such as band, choir, art, and athletics.

Urbana is a community of about 41,250 residents located in East Central Illinois, a very fertile agricultural area 130 miles south of Chicago. Now serving over 1,100 students, **Urbana High School** (*Little Women: The Musical*) is the only high school of Urbana School District 116. As the only public high school in District 116, the student body is quite diverse in regard to academic, cultural, ethnic, and economic backgrounds. The theatre program is host to

one of the oldest Thespian troupes in the state of Illinois, Troupe #161. As an extracurricular program, they put on 3-4 productions each year including at least one musical, one straight play and one production of stories written by their own elementary school students. They also have a course offering for an introduction to theatre class that is offered as a semester-long course each year. Each year the program draws in around 150 student participants led by two full-time UHS Staff members and several volunteers.

The **Victor J. Andrew High School** Theatre Program (*Next to Normal*) consists of 150 students participating in two musicals, a freshman show, a play, group interpretation, and an improv troupe each year. One Acting and Theatre course acts as the lone curricular offering at present. There are currently nine teachers involved in theatre productions each year. Andrew Theatre has been pleased to perform for and educate the community surrounding the suburb of Tinley Park, a south suburb of approximately 56,000 people. We are strongly committed to providing educational and entertaining theatrical experiences for our students and community.

**Wauconda High School** (*The Addams Family Musical*) is in a Unit School district. 1,320 students attend the school with roughly 75 students involved in the theatre program. The school does two full-length shows a year (one play and one musical) and a student directed production. There is one teacher that teaches Theatre Arts 1 and Theatre Arts 2, and an auditorium manager who is also the tech director. This music program, consisting of band and choir, serves over 250 students.

Students, we want your feedback!  
Share your thoughts about  
this year's Festival by visiting  
[www.illinoistheatrefest.org](http://www.illinoistheatrefest.org) to complete  
the Festival survey.



## WORKSHOPS RECOMMENDED FOR TEACHERS AND SPONSORS

All workshops are valuable and available to teachers and students. However, the following workshops may be especially relevant to teachers.

### Friday

|                          |   |                                 |
|--------------------------|---|---------------------------------|
| <b>8:00 am–5:00 pm</b>   | <b>Hospitality Room for Sponsors</b>                              | <b>KCPA Krannert Room</b>       |
| 9:00 am–10:10 am         | The Care and Feeding of the Actor's (and the Teacher's) Soul      | ISR 106 (Townsend North Lounge) |
| 9:00 am–10:10 am         | Partnerships with High School Theatre Programs                    | Music Building 1140             |
| 9:00 am–10:10 am         | Theatre History: The Modified Orgy                                | Music Building 1144             |
| 10:30 am–11:40 am        | Partnerships with High School Theatre Programs                    | Music Building 1140             |
| 10:30 am–11:40 am        | Theatre History: The Modified Orgy                                | Music Building 1144             |
| 12:00 pm–1:10 pm         | Superhero on Call!: Great Stage Managers Make Great Productions   | Lincoln Hall 1065               |
| 12:00 pm–1:10 pm         | Theatre Camp for Kids—An Amazing Fundraiser!                      | Music Building 1172             |
| 1:30 pm–2:40 pm          | Superhero on Call!: Great Stage Managers Make Great Productions   | Lincoln Hall 1065               |
| 1:30 pm–2:40 pm          | Theatre Camp for Kids—An Amazing Fundraiser!                      | Music Building 1172             |
| 3:00 pm–4:10 pm          | College Counseling Advice for the Future Performing Arts Major    | Music Building 1140             |
| 3:00 pm–4:10 pm          | Feeding Your Students' Hungers: What Kind of Bread Will YOU Be?   | Music Building 1144             |
| 4:30 pm–5:30 pm          | Graduate Class: Theatre as an Interscholastic Activity—THD 493.01 | KCPA CAD Lab                    |
| 4:30 pm–5:40 pm          | College Counseling Advice for the Future Performing Arts Major    | Music Building 1140             |
| 4:30 pm–5:40 pm          | Feeding Your Students' Hungers: What Kind of Bread Will YOU Be?   | Music Building 1144             |
| <b>10:00 pm–11:45 pm</b> | <b>Sponsors' Reception</b>  | <b>Illini Union Ballroom</b>    |

### Saturday

|                        |   |                                 |
|------------------------|---|---------------------------------|
| <b>9:00 am–2:00 pm</b> | <b>Hospitality Room for Sponsors</b>                    | <b>KCPA Krannert Room</b>       |
| 10:00 am–11:10 am      | Motivating Performers to Achieve Excellence             | ISR 106 (Townsend North Lounge) |
| 10:00 am–11:10 am      | Straight Talk about Preparing Your Students for College | Music Building 1140             |
| 11:30 am–12:40 pm      | Motivating Performers to Achieve Excellence             | ISR 106 (Townsend North Lounge) |
| 11:30 am–12:40 pm      | Straight Talk about Preparing Your Students for College | Music Building 1140             |
| 1:00 pm–2:10 pm        | Energizing Your Voice                                   | Music Building 1144             |
| 2:30 pm–3:40 pm        | Energizing Your Voice                                   | Music Building 1144             |

### Don't Forget

In addition to these workshops, come to the **Hospitality Room** in the Krannert Room on Lobby Level 5. It is a great place to network and share with peers throughout the Festival. Also, please attend the **Sponsors' Reception** Friday evening, 10:00 pm–11:45 pm in the Illini Union Ballroom (2nd Floor).

## GRADUATE COURSES FOR TEACHERS AND CPDU INFORMATION

### Graduate Credit Course Information

ITA members have the opportunity to earn graduate credit through Illinois State University. You must have registered online **before coming to the Festival**—that is the only way credit can be received.

ISU is offering one *graduate* course during this Festival—THE 493.01 Theatre as an Interscholastic Activity—for 2 Graduate credit hours.

- **Theatre 493.01 (Workshop in Theatre as an Interscholastic Activity in the Secondary Schools). Spring 2015:** Two credit hours for this course (which is repeatable) are generated through attending workshops and performances during the Festival. Writing reflective and critical analysis papers following the festival are also required. The activities should not interfere with the teacher's responsibilities to students during the Festival. All work for the course is due March 1, 2015.

For more information please contact:

Cyndee Brown  
School of Theatre and Dance—5700  
Illinois State University  
Normal, IL 61790  
Phone: 309-438-5692  
Email: clbrown3@ilstu.edu

### CPDU Information

CPDU forms will be available at the ITA registration table throughout the duration of the Festival. For further information on CPDUs, please contact:

Aimee-Lynn Newlan, Executive Director  
Illinois Theatre Association  
123 Mill Pond Dr.  
Glendale Heights, IL 60139  
Phone: 312-265-5922  
Email: aimeelynn@illinoistheatre.org



# ACKNOWLEDGMENTS

We wish to acknowledge the following people and organizations for their contributions to the 2015 Illinois High School Theatre Festival. Without their generosity and hard work, the Festival would not be possible.

## **The Actors Gymnasium**

**Champaign County Convention & Visitors Bureau**

**Chicago Fly House**

**Chicago Spotlight**

**City of Champaign, Illinois**

**City of Urbana, Illinois**

**Community School District 99 – Downers Grove**

Dr. Mark McDonald, Superintendent  
Scott Kasik, Principal  
Kristin Bormann, Assistant Principal  
Christopher Bronke, English Department Chair  
Farrah Velazquez, English Teacher

**D. Ann Jones**

**Eastland Suites Hotel & Conference Center, Urbana**

**Eric Ward**

**Fox Valley Repertory**

**Gretchen Wieshuber, Studio 2D**

**Heyworth Junior and Senior High School**  
Jeff Asmus, Principal

**Home Depot**

**Illinois Arts Council**

**Illinois State Board of Education**

**Illinois State University**

Larry Dietz, President  
Cyndee Brown, School of Theatre and Dance  
Student Committee Members: Katie Apperson, Kyle Kolling, and Molly Triveline

**Illinois Theatre Association**

Ms. Dinah Barthelmess, President  
Ms. Aimee-Lynn Newlan, Executive Director  
Mr. Kurt Steinhauer, Treasurer  
2014-15 Board of Directors and Members

**Intelligent Lighting Creations (ILC)**

**Libertyville High School**

**Liz Lerman and the Dance Exchange,**  
for allowing us to adopt, practice, and explore the Critical Response Process during this year's Play Selection process

**Lucas Rogers, Peaces of You Photography**

**Maine Township High School–East**

Dr. Ken Wallace, Superintendent  
Dr. Michael Pressler, Principal  
Dr. Linda Rutschke, Asst. Principal for Instruction  
Mr. Dino DiLegge, Asst. Principal for Students  
Ms. Susan Savage, Asst. Principal for Teaching & Learning  
Mr. Michael Wartick, Director, Student Personnel Services  
Ms. Irene Balogh, Administrative Assistant  
Mr. David Sanders, Director, Building Services  
The staff of Maine East High School for hosting All-State rehearsals, offering their time & services, and general support of the 2015 Illinois High School Theatre Festival. You are extraordinary!

**Michaels' Catering**

**Niles West High School**

**On the FLY Productions LLC**

**Protolight**

**Rose Maltese**

**Steve Vandiver, h2 Designs**

**University of Illinois at Urbana-Champaign**

**Administration:**  
Phyllis Wise, Chancellor  
Ilesanmi Adesida, Vice Chancellor for Academic Affairs and Provost  
**Center for Innovation in Teaching & Learning:**  
Michel Bellini, Director  
Faye L. Lesht, Associate Director  
Michelle Marquart, Program Coordinator  
Valli Hammer, Program Associate  
...and all other CITL staff who have provided assistance  
**College of Fine and Applied Arts:**  
Edward Feser, Dean  
**Department of Dance:**  
Jan Erkert, Head  
**Department of Theatre:**  
Jeffrey Eric Jenkins, Head  
J.W. Morrisette, Assistant Head for Academic Programs  
Student Committee Members: Sami Kosinski, Matthew Brooks, and David Mor  
**Krannert Center for the Performing Arts:**  
Mike Ross, Director  
Daniel Pozzebon, Events Director  
Nicole Bromley, Events Technical Director

Lisa Lillig, Asst. Director of Client Relations  
Terry Ciofalo, Asst. to the Production Manager  
...and all other KCPA staff who have provided assistance

**USITT, David Barone, and Steve Jacobs**  
for their help with Tech Olympics

**Vernon Hills High School**

**Panelists**

Aani Bourassa, Univ. of Illinois at Urbana-Champaign  
Ryan Bundy, Intelligent Lighting Creations, Inc.  
Teresa Bundy, St. Charles East H.S.  
Cara Chumbley, Millikin Univ.  
Michael Halberstam, The Writer's Theatre  
Josh Kimball, Southern Illinois Univ. Carbondale  
Justin Kimball, Second City Conservatory  
Jill Meier, Lookingglass Theatre Board of Directors  
Zach Moyer, Zach Moyer Casting  
Marina Mularz, Northwestern Univ.  
Katherine Norman, Univ. of Illinois at Urbana-Champaign  
Charlotte Rathke, The Marriott Theatre/Niles West H.S.  
Hailey Shelton, Northern Illinois Univ.  
Michael Swager, Christie Lites

**...and all of the college student volunteers serving as monitors, ushers, house managers, and in other capacities, who have given their time and efforts to help this Festival run smoothly**

**...all of our friends and families for their support**

**...and anyone else who we might have missed or who assisted with the Festival after this program went to print**

## **ADMINISTRATOR SUPPORT AWARD**

The Illinois High School Theatre Festival Administrator Support Award was established to honor those academic leaders who have bolstered our programs and recognize the inherent values and qualities the arts possess. This year's award honors:

**Jason Fox, Principal**  
**Effingham High School**

Thank you for your years of service and support!

—The participants of the  
Illinois High School Theatre Festival



The Illinois Theatre Association thanks its  
extremely generous Corporate Sponsors:

**A & B**  
**PHOTO & PRINT**

 **GRAND  
STAGE**

**BROADWAY COSTUME, INC.**

Hall Associates  
  
Flying Effects

 **Chicago Spotlight, Inc.**  
There's so much more to see!

**ILC** **Intelligent  
Lighting  
Creations**

 **DESIGNLAB  
CHICAGO**

**usitt** Midwest  
Regional  
Section

**LIGHT  
CHICAGO**  
  
LIGHTING - STAGING - RIGGING

**MMT**  
MUSIC MAKERS THEATRE



**Northern Illinois  
University**



# PERFORM. SHINE. INSPIRE.

That's the view from here.

Uncover and ignite your true potential. A Carthage College Theatre degree exposes students to all facets of the theatrical process, from performing on stage to the creation of a set; from focusing a light to developing a character. Our programs enable students to contribute meaningfully to both the world of theatre and the world at-large.

Our state-of-the-art campus, a beautiful 80-acre arboretum on the shore of Lake Michigan, has a prime location in Kenosha, Wisconsin, midway between Chicago and Milwaukee. Schedule a campus tour or learn more about performance opportunities, auditions, and scholarship information at:

**CARTHAGE.EDU/THEATRE**

**PERFORMANCE • TECHNICAL PRODUCTION & DESIGN  
MUSIC THEATRE • DANCE MINOR**



**CARTHAGE  
COLLEGE**



# Don't just dream it. *DO IT!*

*Collaborate and create with BRADLEY Theatre.*

Freshman Scholarships  
Hollywood Semester  
London & Las Vegas Excursions  
Get on stage in your first semester

B.A./B.S. in  
Theatre Arts  
Theatre Performance  
Theatre Production  
NAST Accredited

photo: BIG LOVE, 2013

**BRADLEY**  
UNIVERSITY

[www.theatre.bradley.edu](http://www.theatre.bradley.edu)



## COCA SUMMER TEEN ARTS INTENSIVES 2015

BALLET | ACTING | VOICE | THEATRE DESIGN

Meet and collaborate with other talented teens!

AGES 14 TO 18 | \$480

Application deadline is May 15, 2015

Financial assistance is available for those who qualify.  
Lodging recommendations available.

For more information, contact Shawna Flanigan, Director of Arts Education, at [sflanigan@cocastl.org](mailto:sflanigan@cocastl.org).

### INSTRUCTORS:



**MICHAEL UTHOFF**  
EXECUTIVE AND ARTISTIC  
DIRECTOR OF  
DANCE ST. LOUIS



**PHIL WOODMORE**  
ARTISTIC DIRECTOR  
ALLEGRO, COCA'S VOICE  
COORDINATOR



**PETE WINFREY**  
PROFESSIONAL ACTOR



**SEAN SAVOIE**  
LIGHTING DESIGNER/  
PRODUCTION MANAGER/  
DESIGN COORDINATOR,  
WASHINGTON UNIVERSITY  
IN ST. LOUIS



**WISCONSIN LUTHERAN COLLEGE**  
**YOUR VOCATION, OUR MISSION.**

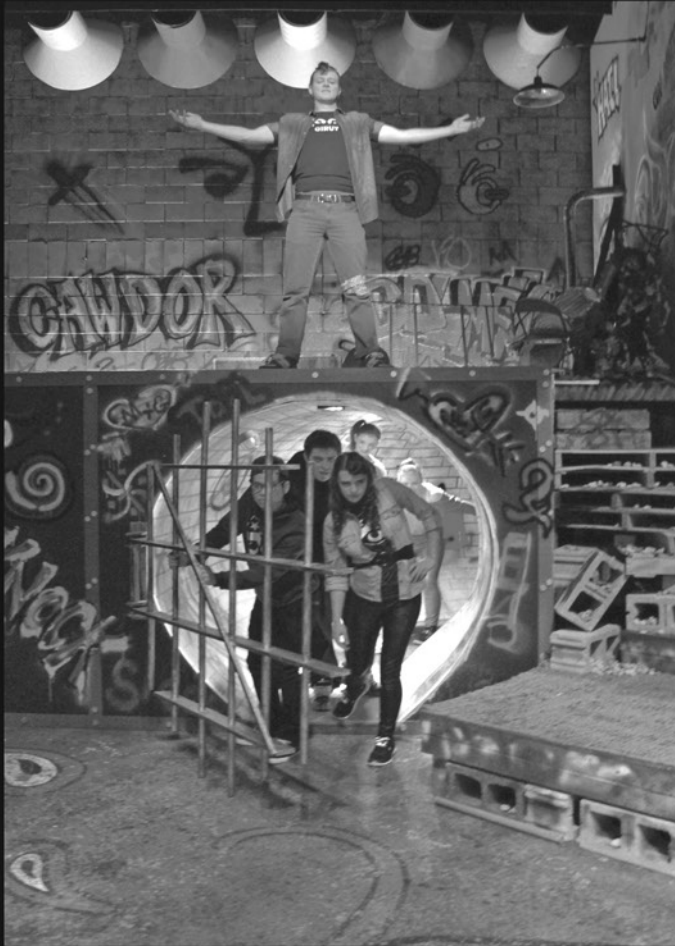


Photo from Spring 2014 production of *In Spite of Thunder: The Macbeth Project*.



A Christian liberal arts college in Milwaukee, Wisconsin  
 Academics: [wlc.edu/academics/theatre](http://wlc.edu/academics/theatre)  
 Scholarships: [wlc.edu/theatrescholarship](http://wlc.edu/theatrescholarship)



**FULL SCHOLARSHIPS  
 AVAILABLE**

# THEATRE

**AT PARKLAND COLLEGE**

**OUR THEATRE AA DEGREE  
 TRANSFERS TO  
 FOUR YEAR INSTITUTIONS!**  
 SCHOLARSHIPS FOR FULL-TUITION  
 AND FEES ARE AVAILABLE.  
**APPLY ONLINE TODAY!**



[FAA.PARKLAND.EDU/THEATRE](http://FAA.PARKLAND.EDU/THEATRE)

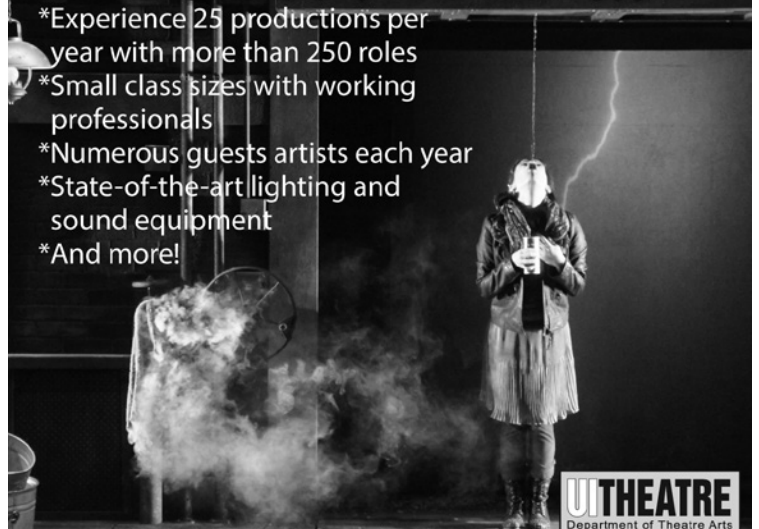
# The University of IOWA

**Focusing on  
 new work**

319.335.2700 • [theatre.uiowa.edu](http://theatre.uiowa.edu) • [arts.uiowa.edu](http://arts.uiowa.edu)

Why major in Theatre at the University of Iowa?

- \*Experience 25 productions per year with more than 250 roles
- \*Small class sizes with working professionals
- \*Numerous guests artists each year
- \*State-of-the-art lighting and sound equipment
- \*And more!



**UI THEATRE**  
 Department of Theatre Arts

THE UNIVERSITY  
 OF IOWA  
 COLLEGE OF LIBERAL ARTS & SCIENCES

Learn more at [theatre.uiowa.edu](http://theatre.uiowa.edu)

UWSP College of Fine Arts & Communication

# Department of Theatre & Dance

## 2015 Program Auditions

### **BFA**

Acting

Musical Theatre

Design/Technology

### **BA**

Drama & Dance

### **Minor**

Drama & Dance

### **ON CAMPUS DATES:**

Theatre major and minor auditions  
February 13 & 28, 2015

Dance major and minor auditions  
February 20 & 27, 2015

### **NEW YORK DATES:**

Acting and Musical Theatre BFA auditions  
January 24 & 25, 2015

### **CHICAGO DATES:**

Acting and Musical Theatre BFA auditions  
February 2-4, 2015

Admission to all degree tracks in the Department of Theatre & Dance at UW-Stevens Point is by an audition and/or interview process.



Department of Theatre & Dance  
College of Fine Arts & Communication  
**University of Wisconsin-Stevens Point**

Audition and program information  
can be found at:

web: [www.uwsp.edu/theatre-dance](http://www.uwsp.edu/theatre-dance)  
email: [theatre-dance@uwsp.edu](mailto:theatre-dance@uwsp.edu)  
phone: 715-346-4429



# Theatrical Weapons Rental



*Swords  
Daggers  
Firearms  
Armor  
and more!*

## Stage Combat

**Stage Combat  
Choreography**

**Tim Frawley**  
*Master at Arms*

***The Midwest's Largest  
Weapons Rental Source***

*see photos of our extensive stock at:*

**[www.fortecombat.com](http://www.fortecombat.com)**

Where  
you  
discover  
your own  
vision  
and  
voice.



Stop by the Eureka College booth and ask about Theatre Grants and learn about financial offerings in Music, Art, and Band.

**Fine and Performing  
Arts Majors at Eureka**

- Art
- Arts Administration
- Arts Administration track, Business Administration
- Music, Performance & Non-Performance
- Music Education
- Pre-Art Therapy
- Pre-Music Therapy
- Theatre Arts & Drama
  - History & Theory
  - Production
  - Performance

**EUREKA** COLLEGE  
THE MOMENT OF DISCOVERY  
FOUNDED 1855  
**www.eureka.edu/arts**  
888.438.7352

# LET CHICAGO BE YOUR STAGE

**University of Illinois at Chicago**

**2015 AUDITION DATES:**

|             |          |
|-------------|----------|
| December 1  | March 9  |
| January 26  | March 14 |
| February 2  | April 6  |
| February 16 |          |

**BFA Acting-BA Acting-BA Theatre Design**

**School of  
Theatre & Music**



**312.996.3991 | [theatre@uic.edu](mailto:theatre@uic.edu) | [theatreandmusic.uic.edu](http://theatreandmusic.uic.edu)**





The English-Speaking Union  
**National Shakespeare Competition**

*"Suit the ACTION to the word,  
the WORD to the action..."*

[www.shakespearecompetition.org](http://www.shakespearecompetition.org)



The English-Speaking Union  
**National Shakespeare Competition**  
**just for High School Students:**



- Monologues & Sonnets
- Meets Common Core Standards
- Easy for Teachers
- Challenging and Fun for Students
- Prizes for Students & Teachers
- Best of all . . . it's Free!

Everything you need to start a lively Shakespeare event in your school and classroom.

Fall-Winter: School Competitions  
Jan-March: Community Competitions  
Spring: Nationals in New York City

The English-Speaking Union  
Education. Scholarship. Understanding.



[shakespearecompetition.org](http://shakespearecompetition.org)  
[shakespeare@esuus.org](mailto:shakespeare@esuus.org)  
**Contact: Victoria Arnold, Executive Director**  
**312-772-3782 or [Chicago@ESUUS.org](mailto:Chicago@ESUUS.org)**



THE SCHOOL OF

# ILLINOIS WESLEYAN THEATRE ARTS



*Degree Programs Offered:*

**BA in Theatre Arts • BFA in Acting**  
**BFA in Music Theatre**  
**BFA in Design & Technology**



To schedule an audition, arrange a campus visit,  
or to learn more about the School of Theatre Arts,  
contact the **Theatre Recruiting Office** at  
**309-556-3944** or e-mail: **theatre@iwu.edu**  
**[www.iwu.edu/theatre](http://www.iwu.edu/theatre)**





SCHOOL OF  
**THEATRE AND DANCE**  
*Illinois State University*



Acting

Dance Performance & Dance Education

Design/Production

Theatre Education

Theatre Studies

*play*  
**BOLDLY**



ISUTheatre

[finearts.illinoisstate.edu/theatre](http://finearts.illinoisstate.edu/theatre)



**LOVE'S LABOUR'S LOST**  
by William Shakespeare

**RICHARD II**  
by William Shakespeare

The Q Brothers'  
**Q GENTS**  
by GQ and JAQ

*A Hip-hop adaptation of The Two Gentlemen of Verona*

**LOVE'S LABOUR'S WON**  
by Scott Kaiser  
*A World Premier*

2015

ILLINOIS SHAKESPEARE FESTIVAL

**SEASON**

July through August

For tickets,  
call (309) 438-2535  
or visit [theFestival.org](http://theFestival.org)

Ewing Cultural Center  
48 Sunset Rd.  
Bloomington, Illinois



ILLINOIS STATE  
UNIVERSITY  
*Illinois' first public university*

ACTOR: NEIL MOELLER. PHOTO: PETER GUTHRIE

The Q Brothers  
are coming to the  
Illinois Shakespeare Festival!

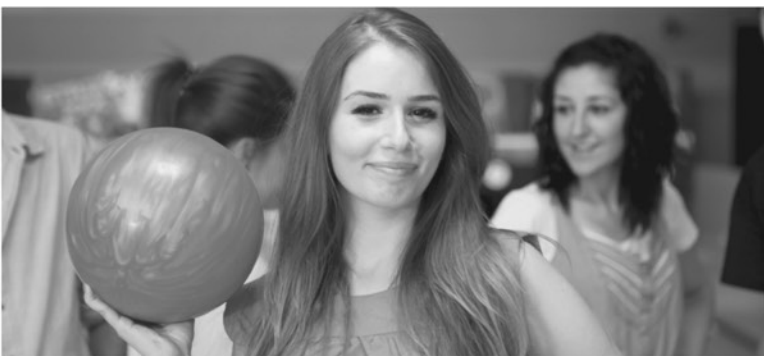


The Q Brothers'  
**Q Gents**  
by  
GQ & JAQ

A Hip-hop adaptation of  
*The Two Gentlemen of Verona!*

Ask about special High School performances!  
August 12-23, 2015      Call 309.438.8783

CONNECT  
CELEBRATE  
STAY  
CREATE  
HANG OUT



**WELCOME**  
ILLINOIS HIGH SCHOOL  
THEATRE FESTIVAL  
WE'RE GLAD TO HAVE YOU!



EAT  
READ  
MAKE FRIENDS  
PLAY  
SING  
RELAX  
SHOP  
HAVE FUN

{at} **THE UNION**



**ILLINI UNION**  
union.illinois.edu



do it all {at} **THE UNION**



# ILLINOISTHEATRE

WE MAKE THEATRE MAKERS

The Tempest, Fall 2013

Offering a comprehensive array of theatre programs at both the undergraduate and graduate levels, Illinois Theatre is nationally distinguished for the quality and professional character of the education it provides. Through the full range of theatre arts, including acting, theatre studies, theatre history, and Level 21—the design, production, and management training program overseen by Illinois Theatre and Krannert Center—students learn to approach complex problems from unconventional perspectives and become leaders in their fields.

## POLAROID STORIES

TH-SA OCT 2-4, TU-SU OCT 7-12

## THE SKIN OF OUR TEETH

TH-SA OCT 16-18, TH-SU OCT 23-26

## DESSERT AND CONVERSATION\*

SA OCT 18, SU OCT 26

## OH WHAT A LOVELY WAR

TH-SA NOV 6-8, TU-SU NOV 11-16

## THE SULLIVAN PROJECT

WE-FR FEB 18-20 AT 7:30PM

SA-SU FEB 21-22 AT 3PM AND 7:30PM

## 'TIS PITY SHE'S A WHORE

TH-SA MAR 5-7, TH-SU MAR 12-15

## DESSERT AND CONVERSATION\*

SA MAR 7, SU MAR 15

## NOT ABOUT NIGHTINGALES

TH-SA APR 9-11, TU-SU APR 14-19

Purchase 4+ performances to receive a discounted price.

\*Pre-performance talk



THEATRE.ILLINOIS.EDU

FINE + APPLIED  
**ARTS**

# LEARN TO FLY



We were pleased to provide the  
Circus training and choreography for the  
Illinois High School Theatre Festival this year.

As we say at the gym,

*Good Fast Safe Show!*

**the actors**  
**gymnasium®**  
Circus & Performing  
Arts School

Just off the Noyes purple line 'L' stop • [www.actorsgymnasium.org](http://www.actorsgymnasium.org) • 847.328.2795



# PURDUE THEATRE



- Faculty focused on your success
- Immediate production opportunities
- Internship and networking placement
- Small class size in a major university setting

**ROCK SOLID PERFORMANCES START HERE.**

**Auditions: January 31, 2015 ▪ February 28, 2015**

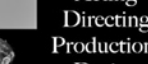
ROCKFORD  
UNIVERSITY  
— 1847 —

**5050 E. State St., Rockford, IL 61108**  
**815.226.4050 • rockford.edu**

Break a leg! Illinois High School Theatre Festival 2015



B.F.A.  
Musical  
Theatre



wiu.edu/theatre

(309) 298-1543

Department of Theatre and Dance  
Western Illinois University



UNIVERSITY

**Theater and Dance**

Performance  
Design/Tech.  
Dance  
History/Literature/Crit.  
Theater Education



# SIUE

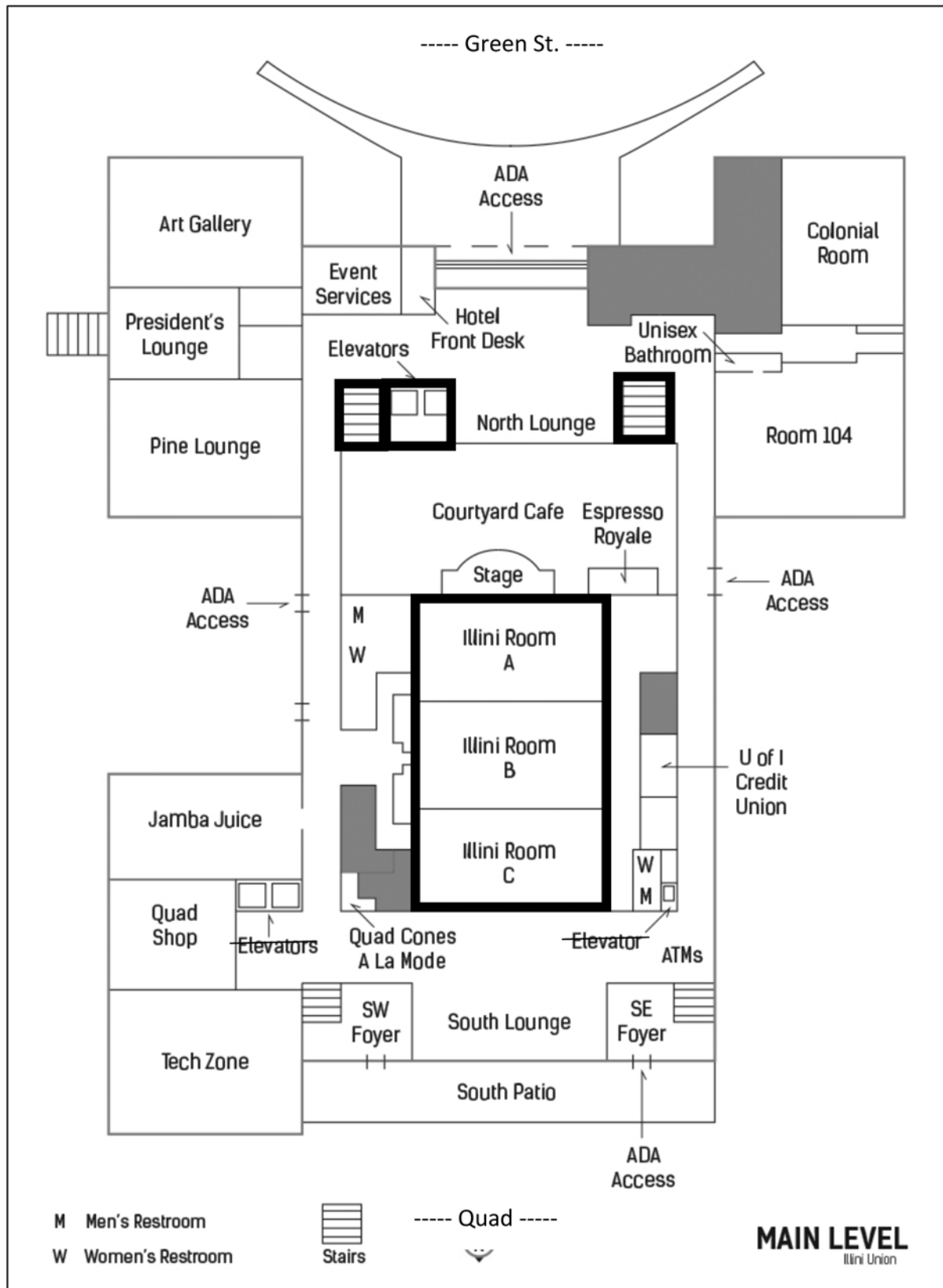
**618.650.2773**

siue.edu/artsandsciences/theater

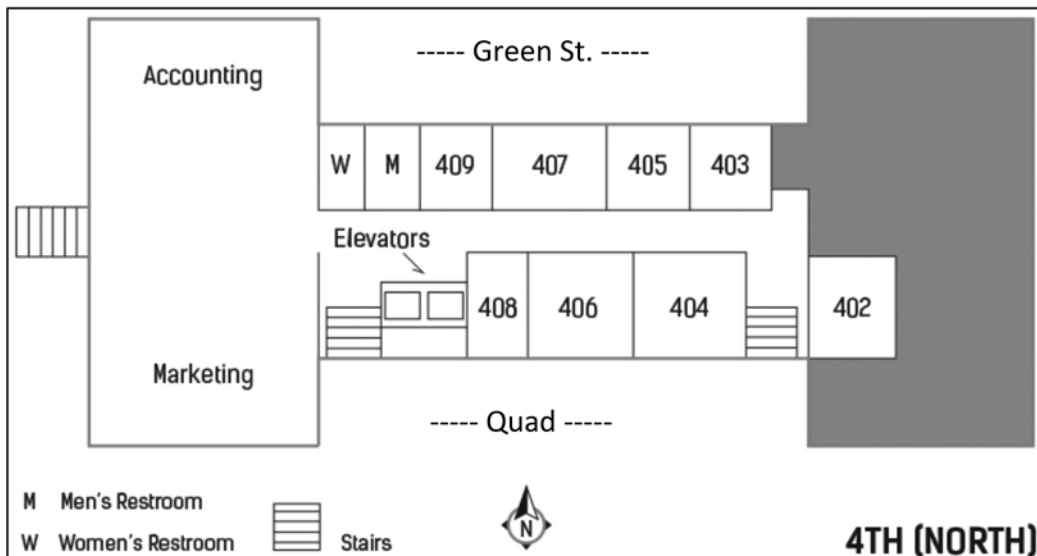
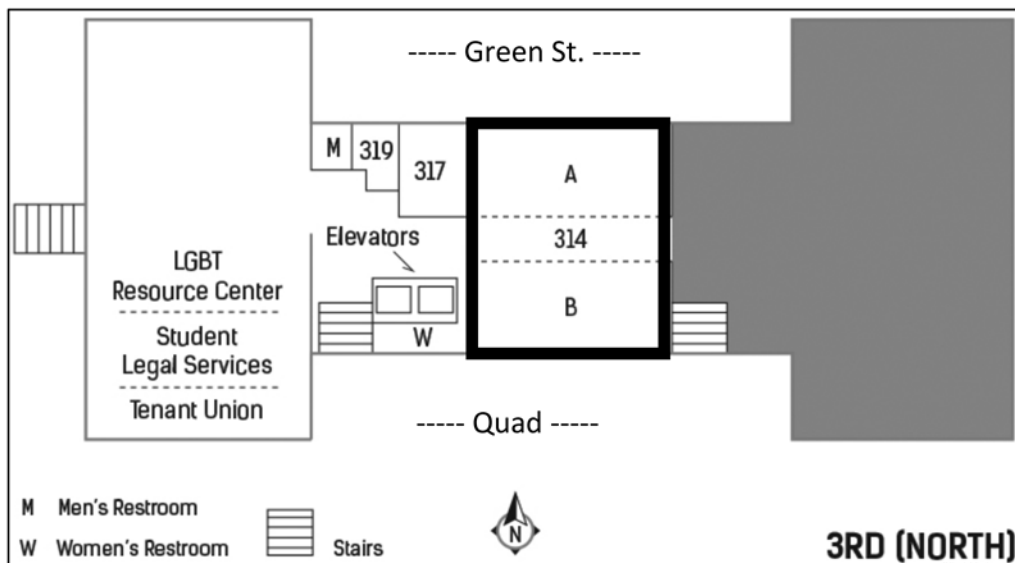
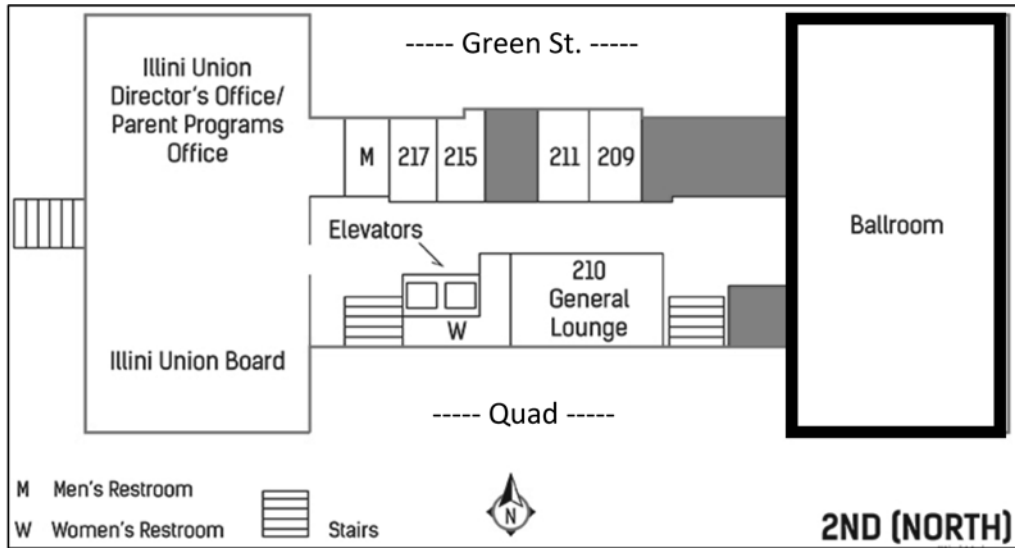
## Notes



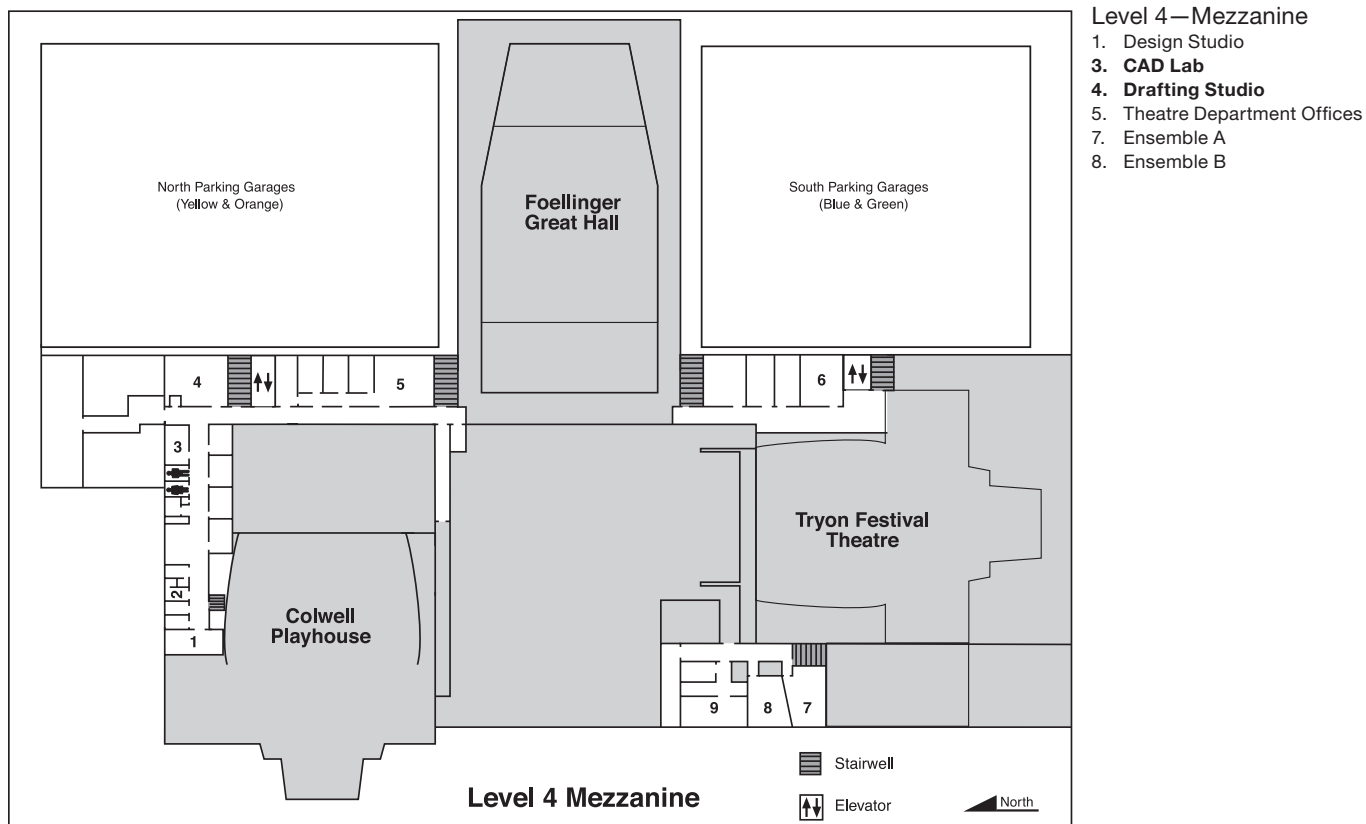
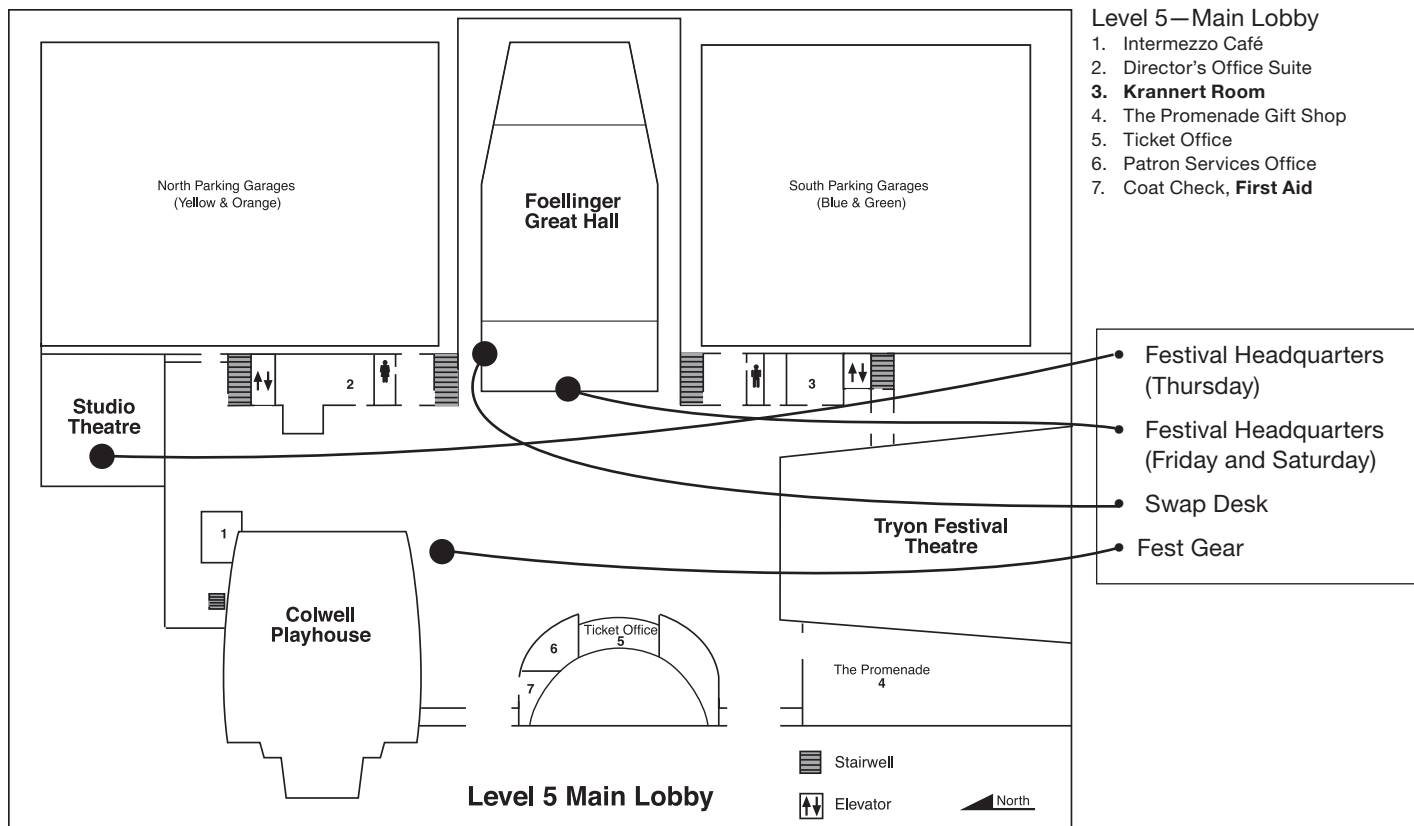
# ILLINI UNION MAPS

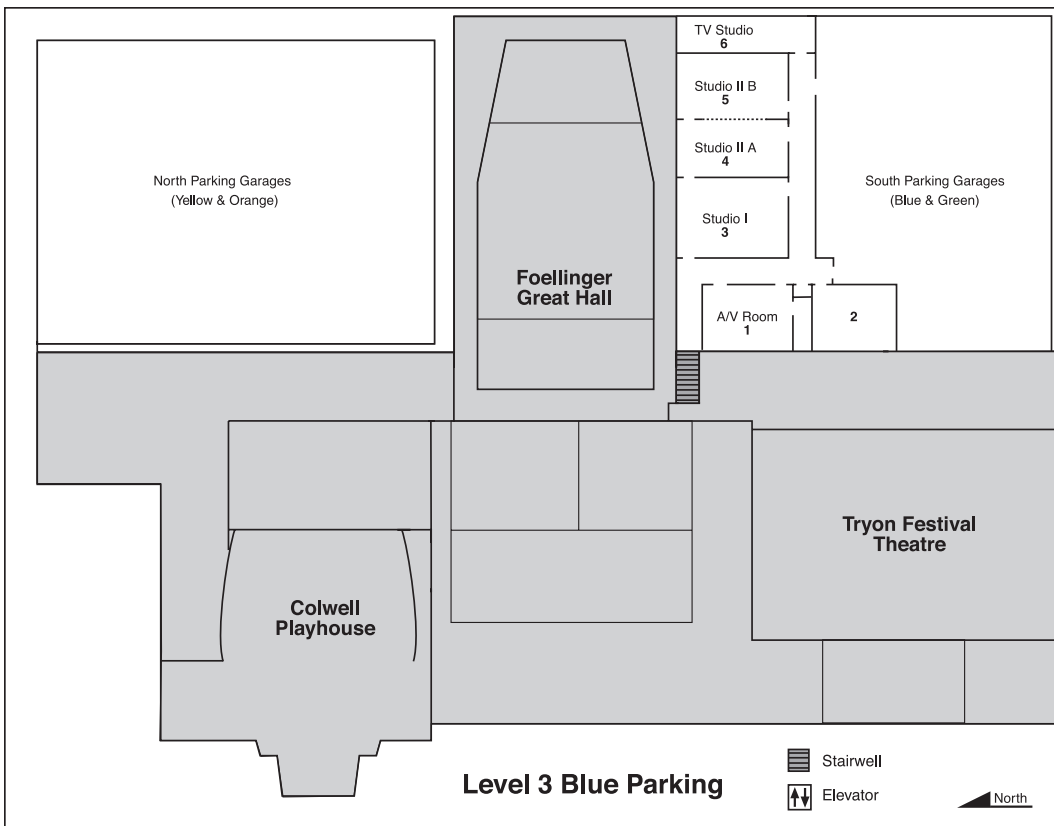


Use the north (Green St. side) stairs and elevators to access Floors 2–4.  
The north & south ends of the Illini Union are not connected on Floors 2–4.



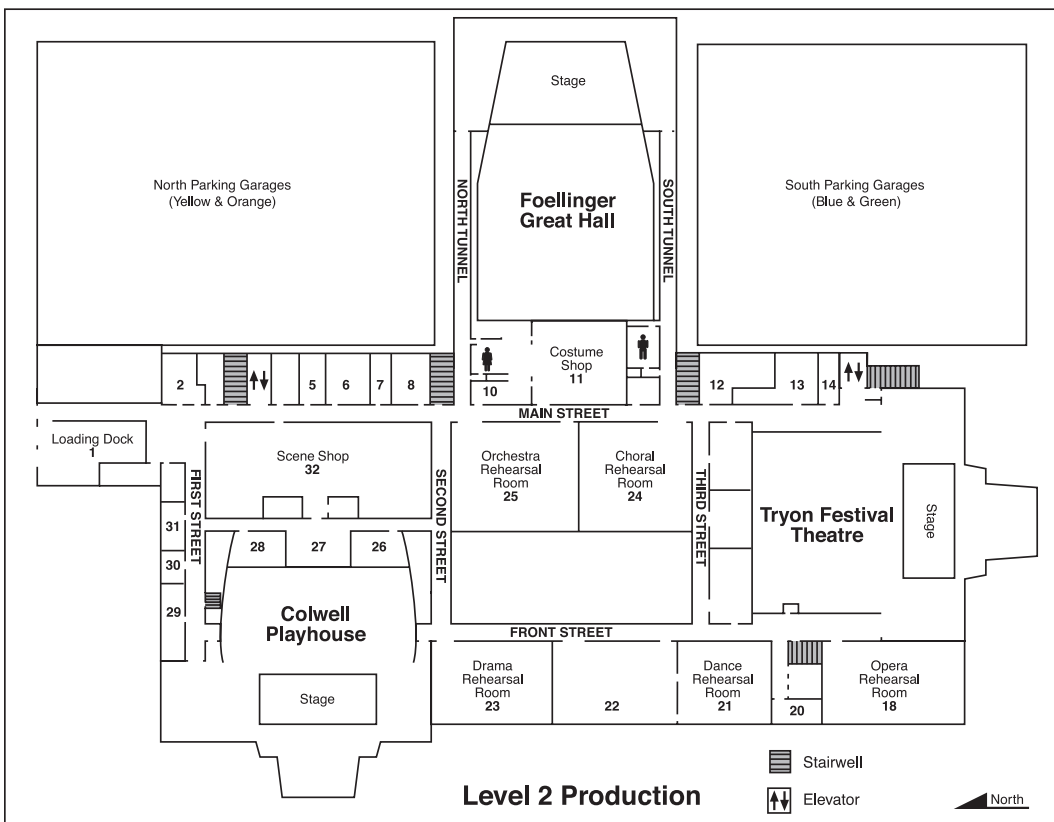
# KRANNERT CENTER FOR THE PERFORMING ARTS MAPS





**Level 3—Blue Parking Garage**

1. A/V Room
3. Studio 1
4. Studio 2A
5. Studio 2B
6. TV Studio



**Level 2—Production**

1. Loading Dock
5. Lighting Office
6. Prop Shop
7. Events Office
8. Production Office
11. Costume Shop
12. Audio Offices
18. Opera Rehearsal Room
21. Dance Rehearsal Room
23. Drama Rehearsal Room
24. Choral Rehearsal Room
25. Orchestra Rehearsal Room
26. Playhouse Men's Dressing Room
27. Playhouse Green Room
28. Playhouse Women's Dressing Room
29. Studio Men's Dressing Room
31. Studio Women's Dressing Room
32. Scene Shop



## Notes





## Notes

Lined area for notes, consisting of multiple horizontal dotted lines.



## PLAN YOUR FESTIVAL SCHEDULE

Use the form below to help plan out your schedule.

Name \_\_\_\_\_ School \_\_\_\_\_

| FRIDAY            | EVENT TIME | EVENT  | LOCATION |
|-------------------|------------|--------|----------|
| 9:00 am–10:30 am  |            |        |          |
| 10:30 am–12:00 pm |            |        |          |
| 12:00 pm–1:30 pm  |            |        |          |
| 1:30 pm–3:00 pm   |            |        |          |
| 3:00 pm–4:30 pm   |            |        |          |
| 4:30 pm–6:00 pm   |            |        |          |
| 6:00 pm–7:00 pm   |            | dinner |          |
| 7:00 pm–10:00 pm  |            |        |          |
| 10:00 pm–11:45 pm |            |        |          |
| SATURDAY          | EVENT TIME | EVENT  | LOCATION |
| 10:00 am–11:30 am |            |        |          |
| 11:30 am–1:00 pm  |            |        |          |
| 1:00 pm–2:30 pm   |            |        |          |
| 2:30 pm–4:00 pm   |            |        |          |

The All-State Production of **PIPPIN** is being performed on Thursday 7:30 pm, Friday 1:30 pm and 7:15 pm, and Saturday 10:15 am and 2:30 pm. Please note the performance to which your school has been assigned.



Please join us for the  
**41st Annual Illinois High School Theatre Festival**  
January 7-9, 2016 at Illinois State University

# *Dare to Dream*

**Carmel DeStefano**, IHSTF Executive Director  
Reavis High School  
ctd22@sbcglobal.net

## **Announcing the 2016 All-State Production**



THE SCHOOL EDITION

By Jonathan Larson

Dennis Anastasopoulos, Director  
Reavis High School  
danastasopoulos@d220.org

For more information,  
please attend one of the *RENT* workshops:  
Friday 3:00 pm-4:10 pm and 4:30 pm-5:40 pm  
in ISR Multipurpose 29 B&C

## Commonly Used Acronyms & Abbreviations

IHSTF: Illinois High School Theatre Festival

ITA: Illinois Theatre Association

KCPA: Krannert Center for the Performing Arts

FGH: Foellinger Great Hall (in KCPA)

TFT: Tryon Festival Theatre

CPH: Colwell Playhouse

STH: Studio Theatre

CAD: Computer-Aided Drafting/Design

ISR: Illinois Street Residence Hall

CPDU: Continuing Professional Development Unit

UIUC: University of Illinois at Urbana-Champaign

C-U: Champaign-Urbana

ISU: Illinois State University

### Category Codes

A: Acting

C: Costuming/Makeup

D: Directing/Stage Management

I: Instructors/Teachers

M: Movement/Dance

P: Playwriting

S: Singing/Musical Theatre

T: Technical Theatre

V: Variety

### **NEW: We Have Our Own App!**

Go to the Apple App Store  
or Google Play Store and  
search for "Illinois High  
School Theatre Festival" to  
download the app today.



**Don't forget to complete  
the online survey at  
[www.illinoistheatrefest.org](http://www.illinoistheatrefest.org)**